



2.0t~3.2t RC 系列内燃平衡重式叉车
2.0t~3.2t RC Series Internal Combustion Counterbalanced Forklift Truck

门架零件目录 MAST PARTS CATALOG

2013年03月 第2版
Mar. 2013 2nd Edition



Hangcha Forklift Parts Manual

Forklift Mast Parts Catalog

Hangcha 2.0t-3.2t RC Series Internal Combustion Counterbalanced Forklift Truck

This catalog collects all the components in a series of 2-3.5 ton RC forklift trucks, such as SIMPLEX, DUPLEX, and TRIPLEX.

1. Mast, Fork Assy, Chain Assy, Fork Carriage Assy, Side Shifter Assy;
2. Lifting parts, Mast Piping, Lateral Moving Circuit, Fourth Oil;
3. Side Shift Cylinder, Lift Cylinder(Right), Lift Cylinder(Left), Tilt Cylinder, Lifting Cylinder(Short);
4. Complex Roller Assy, Cross Roller Assy;
5. Other Optional Parts List.

Noted:

1. Users can look up the component series number according to the truck's rated load and mast types, and then they can find the drawing codes and standards of the part in terms of the series number.
2. On the top right corner, there is an expression of rated load and mast types which are applicable for this assy. Furthermore, please look at the parts used for different lift heights distinctively in the schedule.



Anhui Leading Forklift Parts Co., Ltd.
www.leadingforkliftparts.com
www.youtube.com/@leadingforkliftparts



2.0t~3.2t RC 系列内燃平衡重式叉车
2.0t~3.2t RC Series Internal Combustion Counterbalanced Forklift Truck

门架零件目录

MAST PARTS CATALOG

2013年03月 第2版
Mar. 2013 2nd Edition



杭叉集团股份有限公司
HANGCHA GROUP CO., LTD.

全国客服热线：400-884-7888

- 地址：中国浙江临安经济开发区东环路 88 号
- 电话：0571-88926666（总机号）85191117
- 传真：0571-85131772 ■ 邮编：311305
- 网站：<http://www.zjhc.cn> ■ 电子邮件：sales@zjhc.cn

- Address For: OVERSEAS USERS
- Address: 88 Donghuan Road, Lin'an Economic Development Zone, Zhejiang, China
- Fax: 0086-571-88926789 0086-571-88132890 ■ ZIP:311305
- Web: <http://www.hcforlift.com> ■ E-mail: sales@hcforlift.com

说 明

1、本“零件目录”汇集了 2.0t—3.5t RC 系列各种叉车的 2 级宽视野门架、2 级全自由门架、3 级全自由门架零部件。

2、查询方法：

①用户可根据叉车的额定载荷、门架的型式查找所需的零部件的序号,根据序号可查得相应的图号或标准号。

②在目录的右上角表示此总成所适用的额定载荷、门架的型式，不通用零件在备注中说明,此外不同起升高度所对应的零件请在附表中区
别查询。

3、订购零件时，须写明所用叉车的型号,出厂编号,门架高度,所需零部件物料码、名称及订购数量。

4、维修更换零部件时，为确保质量，请使用本厂零部件。

5、为提高质量，本厂将对某些零部件进行改进,对改进部分在本目录中不能同时一一修改,请用户谅解，欲了解详细情况可与本集团销售公
司及配件分公司联系。

INFORMATION

I .This catalogue collects all the parts (components) in series of 2-3.5 ton RC fork lift trucks, such as SIMPLEX, DUPLEX and TRIPLEX.

II .Looking up methods:

I) Users can lookup the part (component) series number according to the truck's rated load and mast types, and then you can find the
drawing codes and standards of the part (the component) in terms of the series number.

II) On the top right corner, there is an expression of rated load and mast types which are applicable for this assy. Furthermore ,please
lookup the parts(components)which used for different lift height distinctively in the Schedule.

III. When you order the parts (components), the truck's Model, factory number ,mast height, code Number of drawing, name and quantity
should be given when ordering the parts or the components.

IV. It is recommended to use the parts and components made by us for ideal the service and maintenance.

V . We reserve the right of the change of the truck in construction for improving our products without notice. For the details of changes,
please consult with sales department of Hangzhou Forklift Truck Co., Ltd.

© 2013 年 03 月 第 2 版 杭叉集团股份有限公司 © Mar. 2013 2nd edition HANGCHA GROUP CO., LTD.

缩写及代码:	Abbreviations and codes:
A1,A2,A3 总成序号	A1,A2,A3 Item,Assy
Assy 总成或组件	Assy Assembly
INC 包含	INC Including
H 最大起身高度	H Maximum Lift Height
非内置式 不带侧移或带外挂式侧移的门架	Non-built-in Without Side shifter or with Hanging outside Side shifter for Mast
内置式 内置式侧移门架	Built-in With Built-in Side shifter for Mast
B 变速箱 冈村变速箱	B transmission Okamura transmission
F 变速箱 国产变速箱	F transmission Chinese transmission
MS 变速箱 韩国变速箱	MS transmission Korea transmission

目录 Contents

序号 ITEM	名称 DESCRIPTION	适用车型 SERIAL NO.	页码 PAGE
图 I Fig. I	复合滚轮组 Complex roller assy	2 级宽视野门架 2 级全自由门架 3 级全自由门架 SIMPLEX MAST DUPLEX MAST TRIPLEX MAST	1
图 II Fig. II	纵向滚轮组 Cross roller assy	2 级宽视野门架 2 级全自由门架 3 级全自由门架 SIMPLEX MAST DUPLEX MAST TRIPLEX MAST	2
图 III Fig. III	侧滚轮组 Side roller assy	2 级宽视野门架 2 级全自由门架 3 级全自由门架 SIMPLEX MAST DUPLEX MAST TRIPLEX MAST	3
图 IV Fig. IV	货叉总成 Fork assy	2 级宽视野门架 2 级全自由门架 3 级全自由门架 SIMPLEX MAST DUPLEX MAST TRIPLEX MAST	4
图 1 Fig.1	起升组件 Lifting part	2.0t-3.2t 2 级宽视野门架 SIMPLEX MAST	5
图 2 Fig.2	链条总成 Chain assy	2.0t-3.2t 2 级宽视野门架 SIMPLEX MAST	9
	选配表 1 Optional Parts List 1	2.0t-3.2t 2 级宽视野门架 SIMPLEX MAST	10
图 3 Fig.3	门架 Mast	2.0t-3.2t 2 级宽视野门架 SIMPLEX MAST	11
	选配表 2 Optional Parts List 2	2.0t-3.2t 2 级宽视野门架 SIMPLEX MAST	12
图 4 Fig.4	货叉架总成 Fork carriage assy	2.0t-3.2t 2 级宽视野门架 2.0t-3.2t SIMPLEX MAST	13
图 5 Fig.5	侧移架总成 Side shifter assy	2.0t-3.2t 2 级宽视野门架 2.0t-3.2t SIMPLEX MAST	14
图 6 Fig.6	侧移油缸 Side shift cylinder	2.0t-3.2t 2 级宽视野门架 2 级全自由门架 3 级全自由门架 2.0t-3.2t SIMPLEX MAST DUPLEX MAST TRIPLEX MAST	16

序号 ITEM	名称 DESCRIPTION	适用车型 SERIAL NO.	页码 PAGE
图 7 Fig.7	右升降油缸/Lift cylinder,Right 左升降油缸/Lift cylinder,Left	2.0t-3.2t 2级宽视野门架 2.0t-3.2t SIMPLEX MAST 2.0t-3.2t 3级全自由门架 2.0t-3.2t TRIPLEX MAST	17
	选配表 3 Optional Parts List 3	2.0t-3.2t 2级宽视野门架 SIMPLEX MAST	21
	选配表 4 Optional Parts List 4	2.0t-3.2t 2级宽视野门架 SIMPLEX MAST	23
图 8 Fig.8	倾斜油缸 Tilt Cylinder	2.0t-3.2t 2级宽视野门架 2级全自由门架 3级全自由门架 2.0t-3.2t SIMPLEX MAST DUPLEX MAST TRIPLEX MAST	25
图 9 Fig.9	油路系统 Mast piping	2.0t-3.2t 2级宽视野门架 SIMPLEX MAST	28
	选配表 5 Optional Parts List 5	2.0t-3.2t 2级宽视野门架 SIMPLEX MAST	30
图 10 Fig.10	起升组件 Lifting part	2.0t-3.2t 2级全自由门架 DUPLEX MAST	31
图 11 Fig.11	链条总成 Chain assy	2.0t-3.2t 2级全自由门架 DUPLEX MAST	35
	选配表 6 Optional Parts List 6	2.0t-3.2t 2级全自由门架 DUPLEX MAST	36
图 12 Fig.12	门架 Mast	2.0t-3.2t 2级全自由门架 DUPLEX MAST	37
	选配表 7 Optional Parts List 7	2.0t-3.2t 2级全自由门架 DUPLEX MAST	38
图 13 Fig.13	货叉架总成 Fork carriage assy	2.0t-3.2t 2级全自由门架 3级全自由门架 2.0t-3.2t DUPLEX MAST TRIPLEX MAST	39
图 14 Fig.14	侧移架总成 Side shifter assy	2.0t-3.2t 2级全自由门架 3级全自由门架 2.0t-3.2t DUPLEX MAST TRIPLEX MAST	40

序号 ITEM	名称 DESCRIPTION	适用车型 SERIAL NO.	页码 PAGE
图 15 Fig.15	右升降油缸/Lift cylinder,Right 左升降油缸/Lift cylinder,Left	2.0t-2.5t 2级全自由门架 DUPLEX MAST	42
	选配表 8 Optional Parts List 8	2.0t-2.5t 2级全自由门架 DUPLEX MAST	44
图 16 Fig.16	右升降油缸/Lift cylinder,Right 左升降油缸/Lift cylinder,Left	3.0t-3.2t 2级全自由门架 DUPLEX MAST	45
	选配表 9 Optional Parts List 9	3.0t-3.2t 2级全自由门架 DUPLEX MAST	47
图 17 Fig.17	短升降油缸 Lifting cylinder, Short	2.0t-3.2t 2级全自由门架 3级全自由门架 2.0t-3.2t DUPLEX MAST TRIPLEX MAST	48
	选配表 10 Optional Parts List 10	2.0t-3.2t 2级全自由门架 DUPLEX MAST	51
	选配表 11 Optional Parts List 11	2.0t-3.2t 3级全自由门架 TRIPLEX MAST	52
图 18 Fig.18	油路系统 Mast piping	2.0t-3.2t 2级全自由门架 DUPLEX MAST	53
	选配表 12 Optional Parts List 12	2.0t-3.2t 2级全自由门架 DUPLEX MAST	55
图 19 Fig.19	起升组件 Lifting part	2.0t-3.2t 3级全自由门架 TRIPLEX MAST	56
图 20 Fig.20	链条总成 Chain assy	2.0t-3.2t 3级全自由门架 TRIPLEX MAST	60
	选配表 13 Optional Parts List 13	2.0t-3.2t 3级全自由门架 TRIPLEX MAST	62
图 21 Fig.21	门架 Mast	2.0t-3.2t 3级全自由门架 TRIPLEX MAST	63
	选配表 14 Optional Parts List 14		64

序号 ITEM	名称 DESCRIPTION	适用车型 SERIAL NO.	页码 PAGE
图 22 Fig.22	油路系统 Mast piping	2.0t-3.2t 3级全自由门架 2.0t-3.2t TRIPLEX MAST	65
	选配表 15 Optional Parts List 15		68
图 23 Fig.23	侧移油路 lateral moving circuit	2.0t-3.2t 2级宽视野门架 SIMPLEX MAST	69
	选配表 16 <Optional Parts List 16>	2.0t-3.2t 2级宽视野门架 SIMPLEX MAST	71
图 24 Fig.24	第四联油路 Fourth oil	2.0t-3.2t 2级宽视野门架 SIMPLEX MAST	72
	选配表 17 <Optional Parts List 17>	2.0t-3.2t 2级宽视野门架 SIMPLEX MAST	74
图 25 Fig.25	侧移油路 lateral moving circuit	2.0t-3.2t 2级全自由门架 DUPLEX MAST	75
	选配表 18 <Optional Parts List 18>	2.0t-3.2t 2级全自由门架 DUPLEX MAST	79
图 26 Fig.26	第四联油路 Fourth oil	2.0t-3.2t 2级全自由门架 DUPLEX MAST	80
	选配表 19 <Optional Parts List 19>	2.0t-3.2t 2级全自由门架 DUPLEX MAST	83
图 27 Fig.27	侧移油路 lateral moving circuit	2.0t-3.2t 3级全自由门架 TRIPLEX MAST	84
	选配表 20 <Optional Parts List 20>	2.0t-3.2t 3级全自由门架 TRIPLEX MAST	88
图 28 Fig.28	第四联油路 Fourth oil	2.0t-3.2t 3级全自由门架 TRIPLEX MAST	90
	选配表 21 <Optional Parts List 21>	2.0t-3.2t 3级全自由门架 TRIPLEX MAST	93

图 I 复合滚轮组
Fig. I Complex roller assy

2 级宽视野门架, SIMPLEX MAST
2 级全自由门架, DUPLEX MAST
3 级全自由门架, TRIPLEX MAST

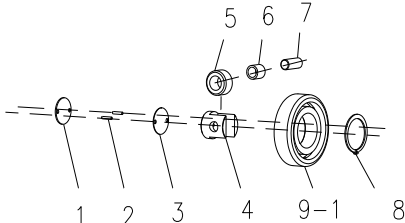
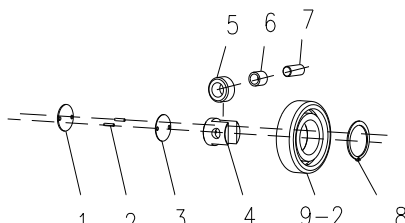
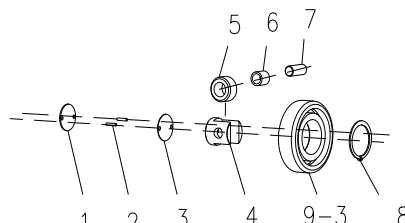
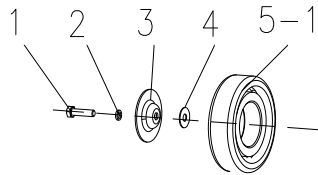
序号 Item	物料码 Part NO.	名称 Description	数量 Qty	备注或适用车型 Remarks or Serial NO.
<p>A: 3M3H-303000-003</p> 				
A	3M3H-303000-003	复合滚轮组 Complex roller assy	1	
<p>B: 3M3H-302000C</p> 				
B	3M3H-302000C	复合滚轮组 Complex roller assy	1	
<p>C: N30M300-007000-002</p> 				
C	N30M300-007000-002	复合滚轮组 Complex roller assy	1	
1	2025M3-100004	调整垫片 Ajusting shim	1 组	
2	G000119-004020-00	销 4x20 Pin	2	
3	2025M3-100003	橡胶垫 Rubber cover	1	
4	2025M3-100002	支承座 Seat	1	
5	3M3-10-50-05	侧向滚轮 Side roller	1	
6	3M3-10-50-06	侧向滚轮衬套 Bush,side roller	1	
7	3M3-10-50-04	轴 Shaft	1	
8	G0894P1-000055-00	挡圈 55 Snap ring55	1	
9-1	3M3H-303100-G00	纵向滚轮 Cross roller	1	
9-2	80511K/K2-G00	纵向滚轮 Cross roller	1	
9-3	80511K2-G00	纵向滚轮 Cross roller	1	

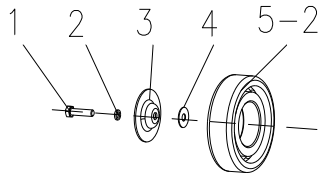
图 II 纵向滚轮组
Fig. II Cross roller assy

2 级宽视野门架, SIMPLEX MAST
2 级全自由门架, DUPLEX MAST
3 级全自由门架, TRIPLEX MAST

D: 3M3H-005000C



E: 3U3H-002000A



序号 Item	物料码 Part NO.	名称 Description	数量 Qty	备注或适用车型 Remarks or Serial NO.
D	3M3H-005000C	纵向滚轮组 Cross roller assy	1	
E	3U3H-002000A	纵向滚轮组 Cross roller assy	1	
1	G005783-008020-00	螺栓 M8x20 Bolt M8x20	1	
2	G000093-000008-00	垫圈 8 Washer8	1	
3	2025TT-100012	滚轮压盖 Press cover	1	
4	2025TT-100011	调整垫 Ajusting shim	1 组	
5-1	80511K/K2-G00	纵向滚轮 Cross roller	1	
5-2	80511K2-G00	纵向滚轮 Cross roller	1	

图 III 侧滚轮组
Fig. III Side roller assy

2 级宽视野门架, SIMPLEX MAST
2 级全自由门架, DUPLEX MAST
3 级全自由门架, TRIPLEX MAST

序号 Item	物料码 Part NO.	名称 Description	数量 Qty	备注或适用车型 Remarks or Serial NO.
F	X25M300-302000-000	侧滚轮组 Side roller assy	1	
1	X25M300-302002-000	衬套 lining	2	
2	3U3H-300001	调整垫片 Ajusting shim	2	
3	X25M300-302100-G00	侧滚轮 Cross roller	1	
4	G000093-000012-00	垫圈 12 Washer12	2	
5	G005782-012050-00	螺栓 M12x50 Bolt M12x50	2	
G	R30M300-302000-002	侧滚轮组 Side roller assy	1	
1	N30M300-000010-000	调整垫圈 Ajusting shim	2 组	
2	N30M300-000011-000	厚垫圈 Washer	2	
3	CN-17-G00	侧滚轮组 Cross roller	1	
4	G000093-000010-00	垫圈 10 Washer10	2	
5	G005782-010045-00	螺栓 M10x45 Bolt M10x45	2	

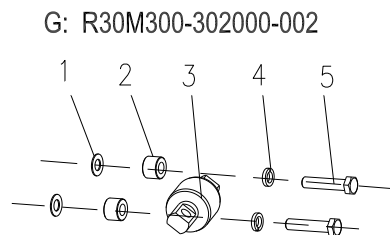
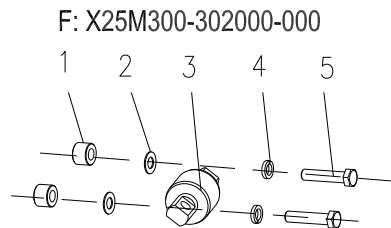


图 IV 货叉总成
Fig.IV Fork assy

2.0t-3.2t 2级宽视野门架, SIMPLEX MAST
2.0t-3.2t 2级全自由门架, DUPLEX MAST
2.0t-3.2t 3级全自由门架, TRIPLEX MAST

序号 Item	物料码 Part No.	名称 Description	数量 Qty	备注或适用车型 Remarks or Serial NO.
A1	N25M300-010000-000	货叉总成 Fork assy	1	2.0t-2.5t
A2	N30M300-010000-000	货叉总成 Fork assy	1	3.0t
A3	N35M300-010000-000	货叉总成 Fork assy	1	3.2t
1	NO PART NO.	货叉体 Fork	1	
2	N25M300-011000-W00	销轴组件 Pin shaft assy	1	2.0t-2.5t
2	N30M300-011000-W00	销轴组件 Pin shaft assy	1	3.0t-3.2t
2-1	NO PART NO.	把手 Knob	1	
2-2	NO PART NO.	弹簧 Spring	1	
2-3	NO PART NO.	销轴 Pin shaft	1	

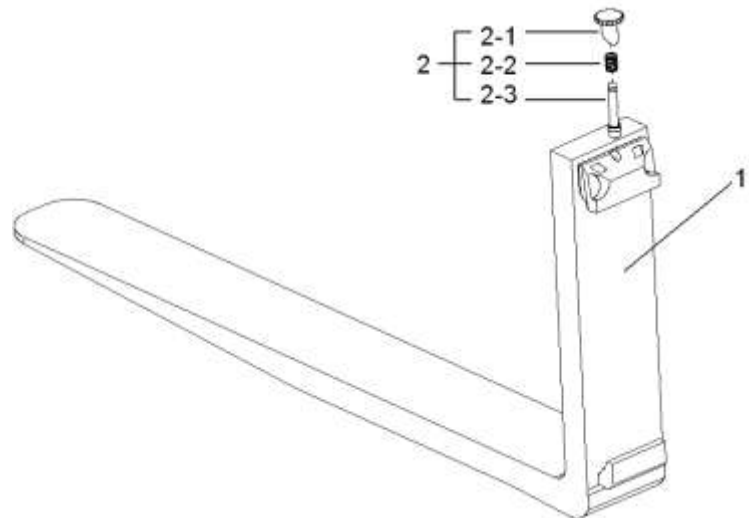


图1 起升组件
Fig.1 Lifting part

2.0t-3.2t 2级宽视野门架 SIMPLEX MAST

序号 Item	物料码 Part NO.	名称 Description	数量 Qty	备注或适用车型 Remarks or Serial NO.
1		内门架 Inside mast	1	Fig.3
2		外门架 Outside mast	1	Fig.3
3		链条总成 Chain assy	2	Fig.2 (2.0t-2.5t)
3		链条总成 Chain assy	2	Fig.2 (3.0t-3.2t)
4	G005786-012040-00	螺栓 M12×1.25×40 Bolt M12×1.25×40	2	
5	G000093-000012-00	垫圈 12 Washer 12	3	
6	N30M300-000012-000	油缸调整垫圈 Ajust gasket	2组	
7	G006170-000020-00	螺母M20 Nut M20	2	
8	N30N450-000005-001	螺钉 M20×46 Screw M20×46	2	
9	G006170-000008-00	螺母M8 Nut M8	4	
10	See OPT.Parts List 3	左升降油缸 Lift cylinder,left	1	Fig.7 (2.0t-2.5t)
10	See OPT.Parts List 3	左升降油缸 Lift cylinder,left	1	Fig.7 (3.0t-3.2t)
11	See OPT.Parts List 3	右升降油缸 Lift cylinder,right	1	Fig.7 (2.0t-2.5t)
11	See OPT.Parts List 3	右升降油缸 Lift cylinder,right	1	Fig.7 (3.0t-3.2t)
12	N25N450-000004-001	U形螺栓 Bolt	2	2.0t-2.5t

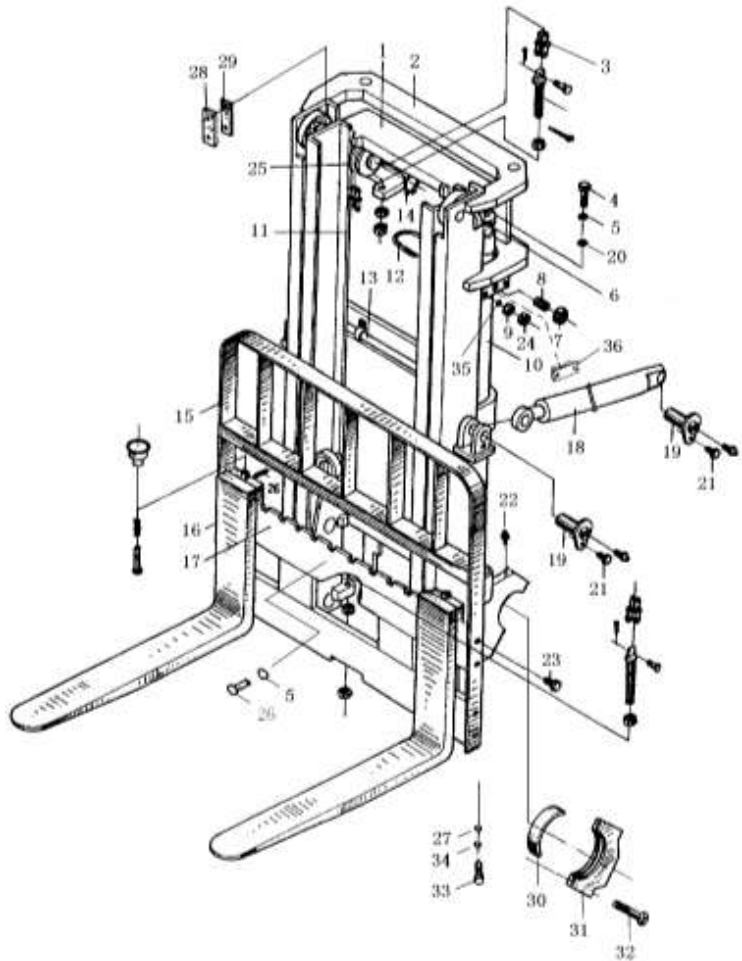


图1 起升组件
Fig.1 Lifting part

2.0t-3.2t 2级宽视野门架 SIMPLEX MAST

序号 Item	物料码 Part NO.	名称 Description	数量 Qty	备注或适用车型 Remarks or Serial NO.
12	N30N450-000004-001	U形螺栓 U-Bolt	2	3.0t-3.2t
13	See OPT.Parts List 5	油路系统 Oil pipe system	1	2.0t-2.5t
13	See OPT.Parts List 5	油路系统 Oil pipe system	1	3.0t-3.2t
14	G0894P1-000045-00	挡圈 45 Snap ring 45	2	
15	RC25M300-020000-000	挡货架 Load bracket	1	2.0t-2.5t
15	RC30M300-020000-000	挡货架 Load bracket		3.0t-3.2t
16		货叉总成 Fork assy	2	见图 IV See Fig.IV
17	RC25M300-300000-002	货叉架总成 Fork shelf assy	1	Fig.4 (2.0t-2.5t)
17	RC30M300-300000-002	货叉架总成 Fork shelf assy	1	Fig.4 (3.0t-3.2t)
17	RC25B300-300000-002	侧移架总成 Side shifter assy	1	Fig.5 (2.0t-2.5t)
17	RC30B300-300000-002	侧移架总成 Side shifter assy	1	Fig.5 (3.0t-3.2t)
18		倾斜油缸 Tilt cylinder	2	Fig.8
19	RC25M300-001000-000	销轴 Pin shaft	4	
20	G0097P1-000012-00	垫圈 12 Washer 12	2	
21	N30M300-004000-000	螺栓 M10×1.25×20 Bolt M10×1.25×20	4	

图1 起升组件
Fig.1 Lifting part

2.0t-3.2t 2级宽视野门架 SIMPLEX MAST

序号 Item	物料码 Part NO.	名称 Description	数量 Qty	备注或适用车型 Remarks or Serial NO.
	22 G001152-010001-00	油杯 M10×1 Nipple Grease M10×1	6	
	23 N30M300-006000-000	螺栓 M14×1.5×30 Bolt M14×1.5×30	8	
	24 G000923-000008-00	螺母 M8 Nut M8	4	
	25 780309K-G00	链轮 Chin wheel	2	2.0t-2.5t
	25 780709H-G00	链轮 Chin wheel	2	3.0t-3.2t
	26 G005783-012025-00	螺栓 M12×25 Bolt M12×25	1	
	27 G000093-000010-00	垫圈 10 Washer 10	2	
	28 N30M300-000014-000	导轨衬垫 Guide board	2	
	29 N30M300-000015-000	调整垫片 Ajust shim	2组	
	30 N30M300-000006-000	轴瓦 Bearing liner	2	
	31 N30M300-000005-001	轴承盖 Bearing cap	2	
	32 N30M300-005000-000	螺栓 M18×1.5×55 Bolt M18×1.5×55	4	
	33 G000070-010030-00	螺钉 M10×30 Screw M10×30	2	
	34 G0097P1-000010-00	垫圈 10 Washer 10	2	
	35 G0097P1-000008-00	垫圈 8 Washer 8	4	

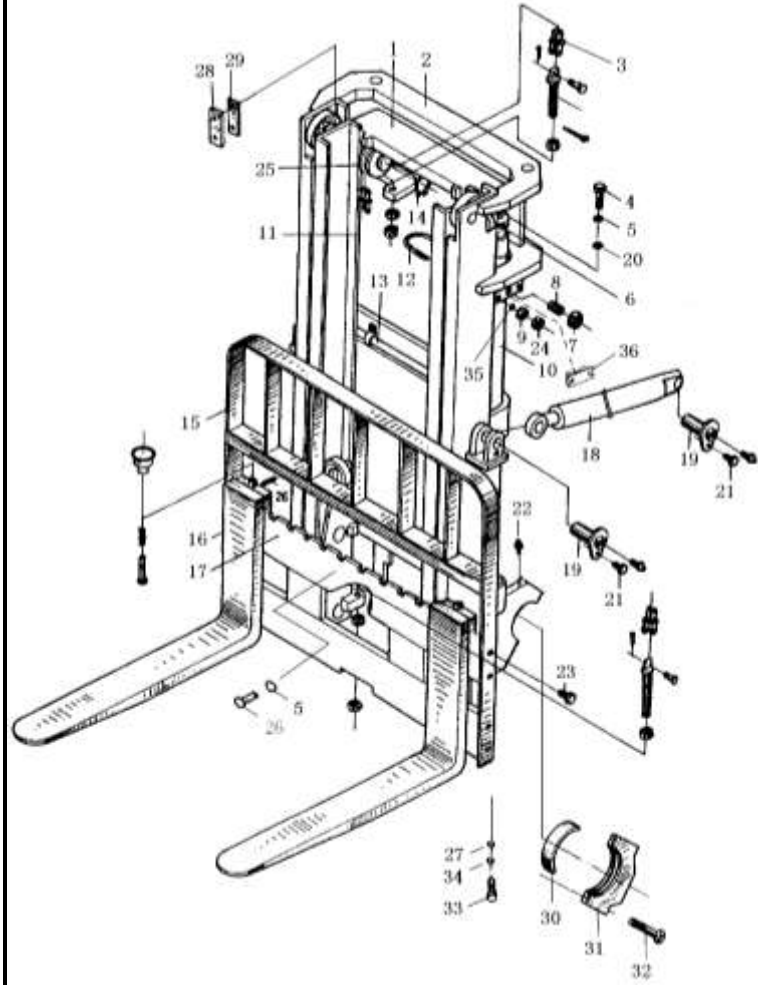
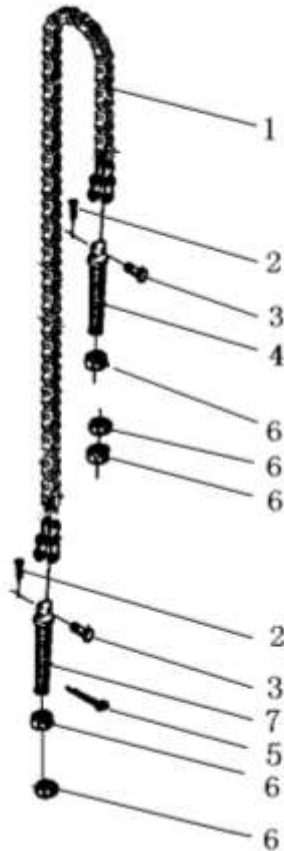


图2 链条总成
Fig.2 Chain assy

2.0t-3.2t 2级宽视野门架 SIMPLEX MAST



序号 Item	物料码 Part NO.	名称 Description	数量 Qty	备注或适用车型 Remarks or Serial NO.
A1	See OPT.Parts List 1	链条总成 Chain assy	1	2.0t-2.5t
A2	See OPT.Parts List 1	链条总成 Chain assy	1	3.0t-3.2t
1	NO PART NO.	板式链 LH1623xN Chain LH1623xN	1	2.0t-2.5t
1	NO PART NO.	板式链 LH1634xN Chain LH1634xN	1	3.0t-3.2t
2	G000091-003020-00	销 3x20 Pin 3x20	2	2.0t-2.5t
2	G000091-3P2020-00	销 3.2x20 Pin 3.2x20	2	3.0t-3.2t
3	NO PART NO.	销轴 Pin shaft	2	2.0t-2.5t
3	NO PART NO.	销轴 Pin shaft	2	3.0t-3.2t
4	NO PART NO.	链条接头 Connector	2	2.0t-2.5t
4	NO PART NO.	链条接头 Connector	2	3.0t-3.2t
5	G000091-2P5028-00	销 2.5x28 Pin 2.5x28	1	
6	G006171-000020-02	螺母 M20x1.5 Nut M20x1.5	5	
7	NO PART NO.	链条接头 Connector	1	2.0t-2.5t
7	NO PART NO.	链条接头 Connector	1	3.0t-3.2t

选配表 1 <Optional Parts List 1>

序号 Item No.	A1 (2.0t-2.5t)	A2 (3.0t-3.2t)
起升高度 Lift Height	物料码 Part No..	物料码 Part No..
2000	RC25M200-030000-001	RC30M200-030000-001
2500	RC25M250-030000-001	RC30M250-030000-001
2700	RC25M270-030000-001	RC30M270-030000-001
3000	RC25M300-030000-001	RC30M300-030000-001
3300	RC25M330-030000-001	RC30M330-030000-001
3500	RC25M350-030000-001	RC30M350-030000-001
3600	RC25M360-030000-001	RC30M360-030000-001
3700	RC25M370-030000-001	RC30M370-030000-001
4000	RC25M400-030000-001	RC30M400-030000-001
4300	RC25M430-030000-001	RC30M430-030000-001
4500	RC25M450-030000-001	RC30M450-030000-001
4700	RC25M470-030000-001	RC30M470-030000-001
4800	RC25M480-030000-001	RC30M480-030000-001
5000	RC25M500-030000-001	RC30M500-030000-001
5500	RC25M550-030000-001	RC30M550-030000-001
6000	RC25M600-030000-001	RC30M600-030000-001

选配表 2 <Optional Parts List 2>

序号 Item No.	1	2
起升高度 Lift Height	代号 Part No..	代号 Part No..
2000	RC25M200-200000-001	RC25M200-100000-002
2500	RC25M250-200000-001	RC25M250-100000-002
2700	RC25M270-200000-001	RC25M270-100000-002
3000	RC25M300-200000-001	RC25M300-100000-002
3300	RC25M330-200000-001	RC25M330-100000-002
3500	RC25M350-200000-001	RC25M350-100000-002
3600	RC25M360-200000-001	RC25M360-100000-002
3700	RC25M370-200000-001	RC25M370-100000-002
4000	RC25M400-200000-001	RC25M400-100000-002
4300	RC25M430-200000-001	RC25M430-100000-002
4500	RC25M450-200000-001	RC25M450-100000-002
4700	RC25M470-200000-001	RC25M470-100000-002
4800	RC25M480-200000-001	RC25M480-100000-002
5000	RC25M500-200000-001	RC25M500-100000-002
5500	RC25M550-200000-001	RC25M550-100000-002
6000	RC25M600-200000-001	RC25M600-100000-002

图4 货叉架总成
Fig.4 Fork carriage assy

2.0t-3.2t 2级宽视野门架 SIMPLEX MAST

序号 Item	物料码 Part NO.	名称 Description	数量 Qty	备注或适用车型 Remarks or Serial NO.
A1	RC25M300-300000-002	货叉架总成 Fork shelf assy	1	2.0t-2.5t SIMPLEX MAST
A2	RC30M300-300000-002	货叉架总成 Fork shelf assy	1	3.0t-3.2t SIMPLEX MAST
1	RC25M300-301000-002	货叉架 Fork carriage	1	2.0t-2.5t SIMPLEX MAST
1	RC30M300-301000-002	货叉架 Fork carriage	1	3.0t-3.2t SIMPLEX MAST
2	3M3H-005000C	纵向滚轮组 Cross roller assy	4组	图II Fig. II
3	3M3H-303000-003	复合滚轮组 Complex roller assy	2组	图I Fig. I
4	X25M300-302000-000	侧滚轮组 Side roller assy	4组	图III Fig.III

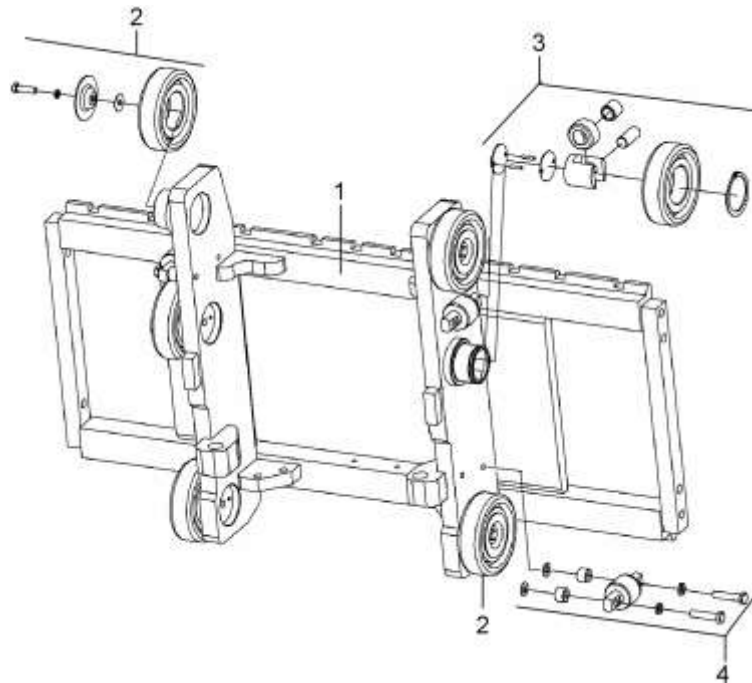


图5 侧移架总成
Fig.5 Side shifter assy

2.0t-3.2t 2级宽视野门架 SIMPLEX MAST

序号 Item	物料码 Part NO.	名称 Description	数量 Qty	备注或适用车型 Remarks or Serial NO.
A1	RC25B300-300000-002	侧移架总成 Side shifter assy	1	2.0t-2.5t SIMPLEX MAST
A2	RC30B300-300000-002	侧移架总成 Side shifter assy	1	3.0t-3.2t SIMPLEX MAST
1	RC25B300-301000-002	叉架体 Fork carriage	1	2.0t-2.5t SIMPLEX MAST
1	RC30B300-301000-002	叉架体 Fork carriage	1	3.0t-3.2t SIMPLEX MAST
2	3M3H-005000C	纵向滚轮组 Cross roller assy	4组	图II Fig. II
3	X25M300-302000-000	侧滚轮组 Side roller assy	4组	图III Fig.III
4	3M3H-303000-003	复合滚轮组 Complex roller assy	2组	图I Fig. I
5	1.4QS1-000006	挡块 Block	2	
6	S16V450-300001-000	塞铁 Plug	3	
7	RC25V450-302000-000	侧移货叉架 Side shift carriage	1	2.0t-2.5t
7	RC30V450-302000-000	侧移货叉架 Side shift carriage	1	3.0t-3.2t
8	S16V450-300005-000	轴 Shaft	2	≤2012-08
8	S16V450-300005-001	轴 Shaft	2	≥2012-09
9	G0097P1-000016-00	垫圈 16 Washer 16	2	≤2012-08
10	G0894P1-000016-00	挡圈 16 Snap ring 16	2	≤2012-08

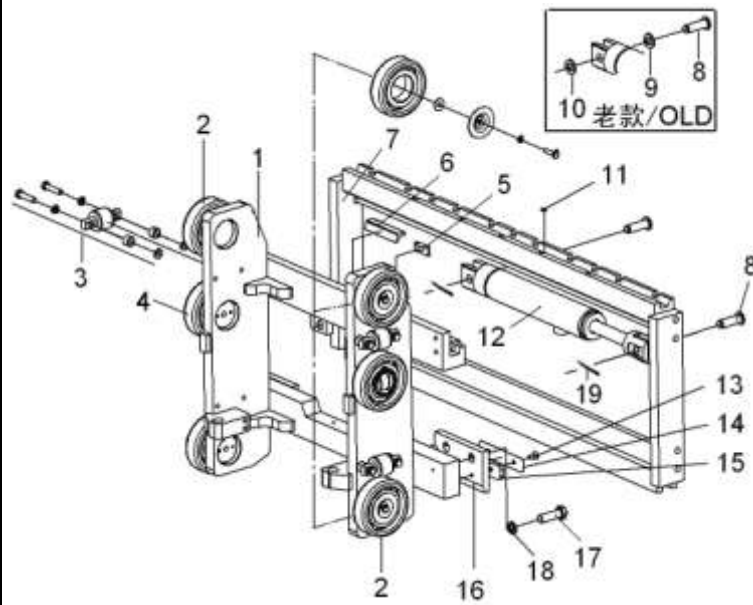


图5 侧移架总成
Fig.5 Side shifter assy

2.0t-3.2t 2级宽视野门架 SIMPLEX MAST

序号 Item	物料码 Part NO.	名称 Description	数量 Qty	备注或适用车型 Remarks or Serial NO.
11	G001152-006000-00	油杯 M6 Oil cup M6	5	
12	S16V450-303000-000	侧移油缸 Side shift cylinder	1	
13	G000068-008016-00	螺钉 M8×16 Screw M8×16	4	
14	S16V450-300002-000	下滑块 Block,down	2	
15	S16V450-300008-000	调整垫 Ajusting shim	2	
16	S16V450-300006-000	挂钩板 Plate	2	
17	G005786-016050-01	螺栓 M16×1.5×50 Bolt M16×1.5×50	4	
18	G000093-000016-00	垫圈 16 Washer 16	4	
19	G000091-3P2030-00	开口销 Split pin	2	≥2012-09

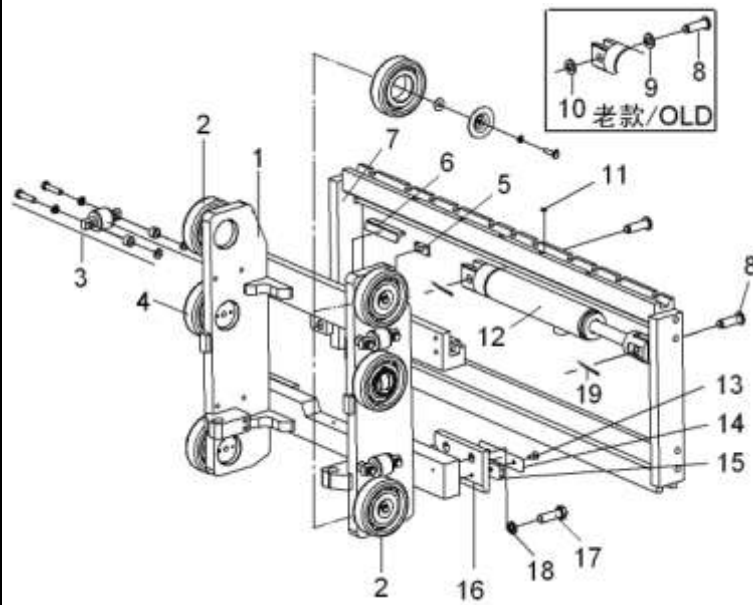
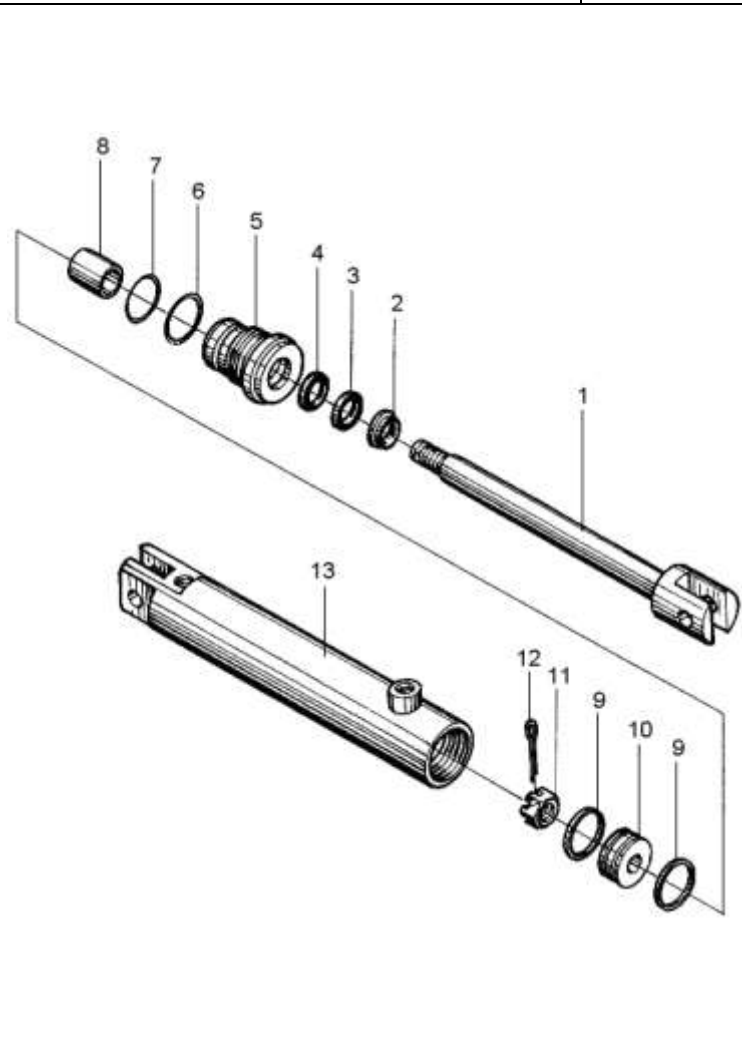


图6 侧移油缸
Fig.6 Side shift cylinder

2.0t-3.2t 2级宽视野门架, SIMPLEX MAST
2.0t-3.2t 2级全自由门架, DUPLEX MAST
2.0t-3.2t 3级全自由门架, TRIPLEX MAST

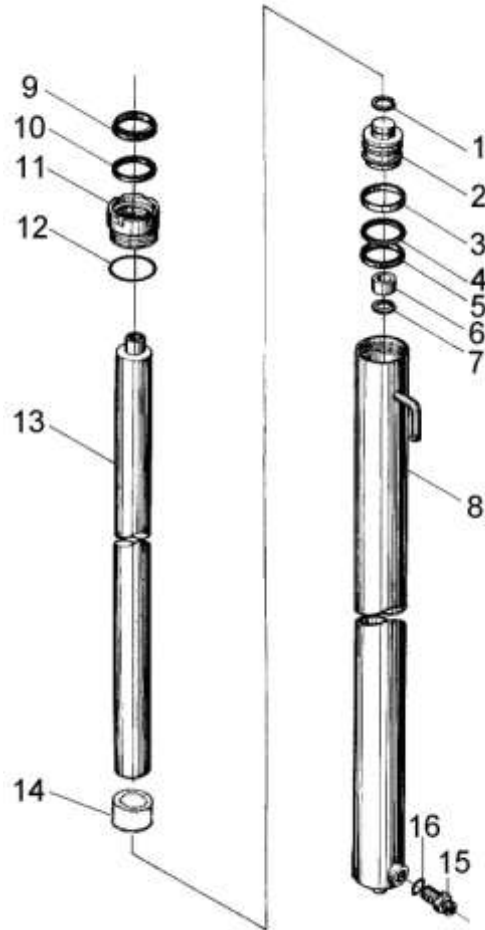


序号 Item	物料码 Part NO.	名称 Description	数量 Qty	备注或适用车型 Remarks or Serial NO.
A1	S16V450-303000-000	侧移油缸 Side shifter cylinder	1	INC:1-13
1	S16V450-303200-000	活塞杆 Cylinder rod	1	
2	CK-025-G00	CK防尘圈d25 Dustproof d25	1	
3	CKG-025-G00	CKG密封圈d25 Seal ring d25	1	
4	CKS-0250-G00	CKS密封圈d25 Seal ring d25	1	
5	2025N4.5-133002	导向套 Guide sleeve	1	
6	G001235-005603P5-00	O形密封圈56x3.5 O-ring 56x3.5	1	
7	G001235-005003P5-00	O形密封圈50x3.5 O-ring 50x3.5	1	
8	2025N4.5-133001	含油油衬 Oil seal	1	
9	3-22-00-10	活塞环 Piston ring	2	
10	3-22-00-03	活塞 Piston	1	
11	3-22-00-02	六角槽形螺母 Nut	1	
12	G000091-004036-00	销4x36 Pin 4x36	1	
13	S16V450-303100-000	油缸体 Cylinder body	1	
K1	S16V450-303-000-kit	密封件维修包 Seal kit of side shifter cylinder	1	INC: 2,3,4,6,7

图7 右升降油缸/Lift cylinder,Right
Fig.7 左升降油缸/Lift cylinder,Left

2.0t-3.2t 2级宽视野门架, SIMPLEX MAST

2.0t-3.2t 3级全自由门架, TRIPLEX MAST



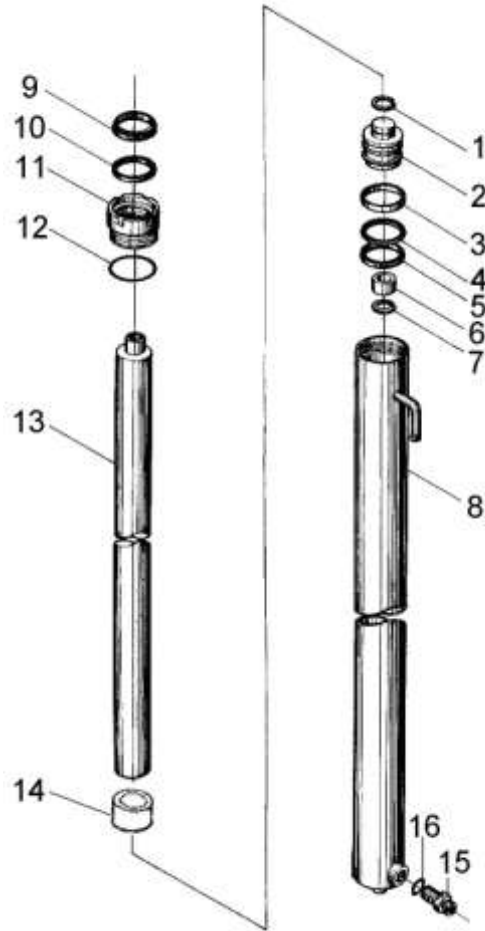
序号 Item	物料码 Part NO.	名称 Description	数量 Qty	备注或适用车型 Remarks or Serial NO.
A1	See OPT. Parts List 3	右升降油缸 Lift cylinder,Right	1	2.0t-2.5t, INC:1-16 SIMPLEX MAST
A1	See OPT. Parts List 3	右升降油缸 Lift cylinder,Right	1	3.0t-3.2t, INC:1-16 SIMPLEX MAST
A2	See OPT. Parts List 3	左升降油缸 Lift cylinder,Left	1	2.0t-2.5t, INC:1-14 SIMPLEX MAST
A2	See OPT. Parts List 3	左升降油缸 Lift cylinder,Left	1	3.0t-3.2t, INC:1-14 SIMPLEX MAST
B1	See OPT. Parts List 4	右升降油缸 Lift cylinder,Right	1	2.0t-2.5t, INC:1-16 3级门架 TRIPLEX MAST
B1	See OPT. Parts List 4	右升降油缸 Lift cylinder,Right	1	3.0t-3.2t, INC:1-16 3级门架 TRIPLEX MAST
B2	See OPT. Parts List 4	左升降油缸 Lift cylinder,Left	1	2.0t-2.5t, INC:1-14 3级门架 TRIPLEX MAST
B2	See OPT. Parts List 4	左升降油缸 Lift cylinder,Left	1	3.0t-3.2t, INC:1-14 3级门架 TRIPLEX MAST
1	G0895P1-000024-00	挡圈 24 Snap ring 24	2	2.0t-2.5t
1	G0895P1-000030-00	挡圈 30 Snap ring 30	2	3.0t-3.2t
2	N25M300-400002-W00	活塞 Piston	2	2.0t-2.5t
2	N30M300-400002-W00	活塞 Piston	2	3.0t-3.2t
3	N25M300-400003-W00	支承圈 Support ring	2	2.0t-2.5t
3	N30M300-400003-W00	支承圈 Support ring	2	3.0t-3.2t

注: 序号 1,2,13,组装后为不可拆分整体,用户订购时应订购整个组合件。
Notice: No. 1,2,13,after the assy, it's a whole,also, when user order.

图7 右升降油缸/Lift cylinder,Right
Fig.7 左升降油缸/Lift cylinder,Left

2.0t-3.2t 2级宽视野门架, SIMPLEX MAST

2.0t-3.2t 3级全自由门架, TRIPLEX MAST



序号 Item	物料码 Part NO.	名称 Description	数量 Qty	备注或适用车型 Remarks or Serial NO.
4	N25M300-400004-W00	保护圈 Ring	2	2.0t-2.5t
4	N30M300-400004-W00	保护圈 Ring	2	3.0t-3.2t
5	FU0613L0-G00	OSI密封圈D50 OSI-seal ring D50	2	2.0t-2.5t
5	FU2144L0-G00	OSI密封圈D56 OSI-seal ring D56	2	3.0t-3.2t
6	N25M300-400005-W00	阀套 Sleeve	2	2.0t-2.5t
6	N30M300-400005-W00	阀套 Sleeve	2	3.0t-3.2t
7	G0895P1-000024-00	挡圈24 Snap ring 24	2	2.0t-2.5t
7	G0895P1-000030-00	挡圈30 Snap ring 30	2	3.0t-3.2t
8	See OPT. Parts List 3	右缸体 Cylinder body,Right	1	2.0t-2.5t SIMPLEX MAST
8	See OPT. Parts List 3	右缸体 Cylinder body,Right	1	3.0t-3.2t SIMPLEX MAST
8	See OPT. Parts List 3	左缸体 Cylinder body,Left	1	2.0t-2.5t SIMPLEX MAST
8	See OPT. Parts List 3	左缸体 Cylinder body,Left	1	3.0t-3.2t SIMPLEX MAST
8	See OPT. Parts List 4	右缸体 Cylinder body,Right	1	2.0t-2.5t 3级门架 TRIPLEX MAST
8	See OPT. Parts List 4	右缸体 Cylinder body,Right	1	3.0t-3.2t 3级门架 TRIPLEX MAST

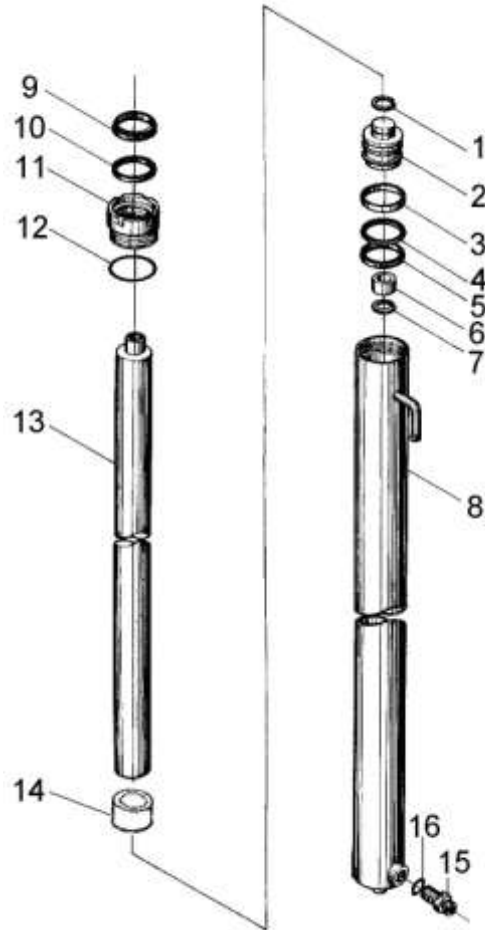
注: 序号 1,2,13, 组装后为不可拆分整体, 用户订购时应订购整个组合件。

Notice: No. 1,2,13, after the assy, it's a whole, also, when user order.

图7 右升降油缸/Lift cylinder,Right
Fig.7 左升降油缸/Lift cylinder,Left

2.0t-3.2t 2级宽视野门架, SIMPLEX MAST

2.0t-3.2t 3级全自由门架, TRIPLEX MAST



序号 Item	物料码 Part NO.	名称 Description	数量 Qty	备注或适用车型 Remarks or Serial NO.
8	See OPT. Parts List 4	左缸体 Cylinder body,Left	1	2.0t-2.5t 3级门架 TRIPLEX MAST
8	See OPT. Parts List 4	左缸体 Cylinder body,Left	1	3.0t-3.2t 3级门架 TRIPLEX MAST
9	FD2342A0-G00	DKI防尘圈 d40 DKI-dustproof ring d40	2	2.0t-2.5t
9	FD2633A0-G00	DKI防尘圈 d45 DKI-dustproof ring d45	2	3~3.2t
10	FU0497K0-G00	ISI密封圈d40 ISI-seal ring d40	2	2.0t-2.5t
10	FU0567K0-G00	ISI密封圈 d45 ISI-seal ring d45	2	3~3.2t
11	N25M300-402000-W00	导向套 Guide sleeve	2	2.0t-2.5t
11	N30M300-402000-W00	导向套 Guide sleeve	2	3~3.2t
12	G3452P1-51P52P65-00	O形密封圈 51.5x2.65 O-ring 51.5x2.65	2	2.0t-2.5t
12	G3452P1-00562P65-00	O形密封圈56x2.65 O-ring 56x2.65	2	3~3.2t
13	See OPT. Parts List 3	活塞杆 Cylinder rod	2	2.0t-2.5t SIMPLEX MAST
13	See OPT. Parts List 3	活塞杆 Cylinder rod	2	3.0t-3.2t SIMPLEX MAST
13	See OPT. Parts List 4	活塞杆 Cylinder rod	2	2.0t-2.5t 3级门架 TRIPLEX MAST
13	See OPT. Parts List 4	活塞杆 Cylinder rod	2	3.0t-3.2t 3级门架 TRIPLEX MAST

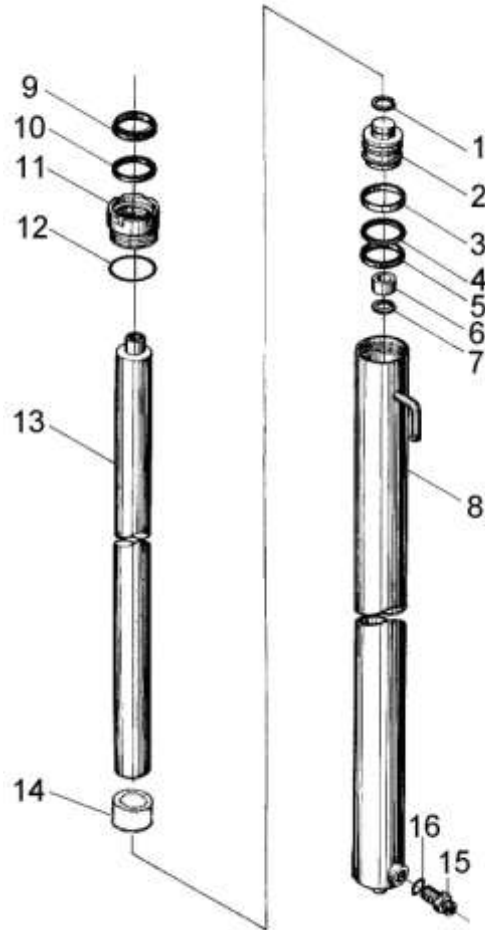
注: 序号 1,2,13,组装后为不可拆分整体,用户订购时应订购整个组合件。

Notice: No. 1,2,13,after the assy, it's a whole,also, when user order.

图7 右升降油缸/Lift cylinder,Right
Fig.7 左升降油缸/Lift cylinder,Left

2.0t-3.2t 2级宽视野门架, SIMPLEX MAST

2.0t-3.2t 3级全自由门架, TRIPLEX MAST



序号 Item	物料码 Part NO.	名称 Description	数量 Qty	备注或适用车型 Remarks or Serial NO.
14	See OPT. Parts List 3	隔套 Spacer bush	2	2级宽视野门架 SIMPLEX MAST
14	See OPT. Parts List 4	隔套 Spacer bush	2	3级门架 TRIPLEX MAST
15	N25M300-403000-W00	油嘴组件 Nozzle valve assy	1	2t-2.5t 右升降油缸 2t-2.5t Lift cylinder,Right
15	N30M300-403000-W00	油嘴组件 Nozzle valve assy	1	3t-3.2t 右升降油缸 3t-3.2t Lift cylinder,Right
16	JISB2401-P14-G00	O形密封圈P14 O-ring P14	1	2t-2.5t 右升降油缸 2t-2.5t Lift cylinder,Right
16	JISB2401-P18-G00	O形密封圈P18 O-ring P18	1	3t-3.2t 右升降油缸 3t-3.2t Lift cylinder,Right
K1	N25M300-4/5-000-kit	左右缸修理包 Lift cylinder- KIT	1	INC:5,9,10,12,16, For 2.0t-2.5t
K2	N30M300-4/5-000-kit	左右缸修理包 Lift cylinder- KIT	1	INC:5,9,10,12,16, For 3.0t-3.2t

注: 序号 1,2,13,组装后为不可拆分整体,用户订购时应订购整个组合件。
Notice: No. 1,2,13,after the assy, it's a whole,also, when user order.

选配表 3 <Optional Parts List 3> <2.0t-2.5t 2级宽视野门架 SIMPLEX MAST>

序号 Item No.	A1	A2	8 (Right)	8 (Left)	13	14
起升高度 Lift Height	物料码 Part No..	物料码 Part No..	物料码 Part No..	物料码 Part No..	物料码 Part No..	物料码 Part No..
2000	N25M200-400000-000	N25M200-500000-000	N25M200-401000-W00	N25M200-501000-W00	N25M200-400001-W00	Without part 14
2500	N25M250-400000-000	N25M250-500000-000	N25M250-401000-W00	N25M250-501000-W00	N25M250-400001-W00	Without part 14
2700	N25M270-400000-000	N25M270-500000-000	N25M270-401000-W00	N25M270-501000-W00	N25M270-400001-W00	Without part 14
3000	N25M300-400000-000	N25M300-500000-000	N25M300-401000-W00	N25M300-501000-W00	N25M300-400001-W00	Without part 14
3500	N25M350-400000-000	N25M350-500000-000	N25M350-401000-W00	N25M350-501000-W00	N25M350-400001-W00	Without part 14
3600	N25M360-400000-000	N25M360-500000-000	N25M360-401000-W00	N25M360-501000-W00	N25M360-400001-W00	N25M360-400002-W00
3700	N25M370-400000-000	N25M370-500000-000	N25M370-401000-W00	N25M370-501000-W00	N25M370-400001-W00	N25M370-400002-W00
3800	N25M380-400000-000	N25M380-500000-000	N25M380-401000-W00	N25M380-501000-W00	N25M380-400001-W00	N25M380-400002-W00
4000	N25M400-400000-000	N25M400-500000-000	N25M400-401000-W00	N25M400-501000-W00	N25M400-400001-W00	N25M400-400002-W00
4300	N25M430-400000-000	N25M430-500000-000	N25M430-401000-W00	N25M430-501000-W00	N25M430-400001-W00	N25M430-400002-W00
4500	N25M450-400000-000	N25M450-500000-000	N25M450-401000-W00	N25M450-501000-W00	N25M450-400001-W00	N25M450-400002-W00
4800	N25M480-400000-000	N25M480-500000-000	N25M480-401000-W00	N25M480-501000-W00	N25M480-400001-W00	N25M480-400002-W00
5000	N25M500-400000-000	N25M500-500000-000	N25M500-401000-W00	N25M500-501000-W00	N25M500-400001-W00	N25M500-400002-W00
5500	N25M550-400000-000	N25M550-500000-000	N25M550-401000-W00	N25M550-501000-W00	N25M550-400001-W00	N25M550-400002-W00
6000	N25M600-400000-000	N25M600-500000-000	N25M600-401000-W00	N25M600-501000-W00	N25M600-400001-W00	N25M600-400002-W00

选配表 3 <Optional Parts List 3> <3.0t-3.2t 2级宽视野门架 SIMPLEX MAST>

序号 Item No.	A1	A2	8 (Right)	8 (Left)	13	14
起升高度 Lift Height	物料码 Part No..	物料码 Part No..	物料码 Part No..	物料码 Part No..	物料码 Part No..	物料码 Part No..
2000	N30M200-400000-000	N30M200-500000-000	N30M200-401000-W00	N30M200-501000-W00	N30M200-400001-W00	Without part 14
2500	N30M250-400000-000	N30M250-500000-000	N30M250-401000-W00	N30M250-501000-W00	N30M250-400001-W00	Without part 14
2700	N30M270-400000-000	N30M270-500000-000	N30M270-401000-W00	N30M270-501000-W00	N30M270-400001-W00	Without part 14
3000	N30M300-400000-000	N30M300-500000-000	N30M300-401000-W00	N30M300-501000-W00	N30M300-400001-W00	Without part 14
3500	N30M350-400000-000	N30M350-500000-000	N30M350-401000-W00	N30M350-501000-W00	N30M350-400001-W00	Without part 14
3600	N30M360-400000-000	N30M360-500000-000	N30M360-401000-W00	N30M360-501000-W00	N30M360-400001-W00	N30M360-400002-W00
3700	N30M370-400000-000	N30M370-500000-000	N30M370-401000-W00	N30M370-501000-W00	N30M370-400001-W00	N30M370-400002-W00
3800	N30M380-400000-000	N30M380-500000-000	N30M380-401000-W00	N30M380-501000-W00	N30M380-400001-W00	N30M380-400002-W00
4000	N30M400-400000-000	N30M400-500000-000	N30M400-401000-W00	N30M400-501000-W00	N30M400-400001-W00	N30M400-400002-W00
4300	N30M430-400000-000	N30M430-500000-000	N30M430-401000-W00	N30M430-501000-W00	N30M430-400001-W00	N30M430-400002-W00
4500	N30M450-400000-000	N30M450-500000-000	N30M450-401000-W00	N30M450-501000-W00	N30M450-400001-W00	N30M450-400002-W00
4800	N30M480-400000-000	N30M480-500000-000	N30M480-401000-W00	N30M480-501000-W00	N30M480-400001-W00	N30M480-400002-W00
5000	N30M500-400000-000	N30M500-500000-000	N30M500-401000-W00	N30M500-501000-W00	N30M500-400001-W00	N30M500-400002-W00
5500	N30M550-400000-000	N30M550-500000-000	N30M550-401000-W00	N30M550-501000-W00	N30M550-400001-W00	N30M550-400002-W00
6000	N30M600-400000-000	N30M600-500000-000	N30M600-401000-W00	N30M600-501000-W00	N30M600-400001-W00	N30M600-400002-W00

选配表 4 <Optional Parts List 4> <2.0t-2.5t 3级全自由门架 TRIPLEX MAST >

序号 Item No.	B1	B2	8 (Right)	8 (Left)	13	14
起升高度 Lift Height	物料码 Part No..	物料码 Part No..	物料码 Part No..	物料码 Part No..	物料码 Part No..	物料码 Part No..
4000	RC25N400-400000-000	RC25N400-500000-000	RC25N400-401000-W00	RC25N400-501000-W00	RC25N400-400001-W00	Without part 14
4300	RC25N430-400000-000	RC25N430-500000-000	RC25N430-401000-W00	RC25N430-501000-W00	RC25N430-400001-W00	Without part 14
4500	N25M300-400000-000	N25M300-500000-000	N25M300-401000-W00	N25M300-501000-W00	N25M300-400001-W00	Without part 14
4700	RC25N470-400000-000	RC25N470-500000-000	RC25N470-401000-W00	RC25N470-501000-W00	RC25N470-400001-W00	Without part 14
4800	RC25N480-400000-000	RC25N480-500000-000	RC25N480-401000-W00	RC25N480-501000-W00	RC25N480-400001-W00	Without part 14
5000	RC25N500-400000-000	RC25N500-500000-000	RC25N500-401000-W00	RC25N500-501000-W00	RC25N500-400001-W00	Without part 14
5500	RC25N550-400000-000	RC25N550-500000-000	RC25N550-401000-W00	RC25N550-501000-W00	RC25N550-400001-W00	N30M550-400002-W00
6000	RC25N600-400000-000	RC25N600-500000-000	RC25N600-401000-W00	RC25N600-501000-W00	RC25N600-400001-W00	N30M600-400002-W00
6500	RC25N650-400000-000	RC25N650-500000-000	RC25N650-401000-W00	RC25N650-501000-W00	RC25N650-400001-W00	N30M650-400002-W00
7000	RC25N700-400000-000	RC25N700-500000-000	RC25N700-401000-W00	RC25N700-501000-W00	RC25N700-400001-W00	N30M700-400002-W00

选配表 4 <Optional Parts List 4> <3.0t-3.2t 3级全自由门架 TRIPLEX MAST >

序号 Item No.	B1	B2	8 (Right)	8 (Left)	13	14
起升高度 Lift Height	物料码 Part No..	物料码 Part No..	物料码 Part No..	物料码 Part No..	物料码 Part No..	物料码 Part No..
4000	RC30N400-400000-000	RC30N400-500000-000	RC30N400-401000-W00	RC30N400-501000-W00	RC30N400-400001-W00	Without part 14
4300	RC30N430-400000-000	RC30N430-500000-000	RC30N430-401000-W00	RC30N430-501000-W00	RC30N430-400001-W00	Without part 14
4500	N30M300-400000-000	N30M300-500000-000	N30M300-401000-W00	N30M300-501000-W00	N30M300-400001-W00	Without part 14
4700	RC30N470-400000-000	RC30N470-500000-000	RC30N470-401000-W00	RC30N470-501000-W00	RC30N470-400001-W00	Without part 14
4800	RC30N480-400000-000	RC30N480-500000-000	RC30N480-401000-W00	RC30N480-501000-W00	RC30N480-400001-W00	Without part 14
5000	RC30N500-400000-000	RC30N500-500000-000	RC30N500-401000-W00	RC30N500-501000-W00	RC30N500-400001-W00	Without part 14
5500	RC30N550-400000-000	RC30N550-500000-000	RC30N550-401000-W00	RC30N550-501000-W00	RC30N550-400001-W00	N30M550-400002-W00
6000	RC30N600-400000-000	RC30N600-500000-000	RC30N600-401000-W00	RC30N600-501000-W00	RC30N600-400001-W00	N30M600-400002-W00
6500	RC30N650-400000-000	RC30N650-500000-000	RC30N650-401000-W00	RC30N650-501000-W00	RC30N650-400001-W00	N30M650-400002-W00
7000	RC30N700-400000-000	RC30N700-500000-000	RC30N700-401000-W00	RC30N700-501000-W00	RC30N700-400001-W00	N30M700-400002-W00

图 8 倾斜油缸
Fig.8 Tilt Cylinder

2.0t-3.2t 2级宽视野门架, SIMPLEX MAST
2.0t-3.2t 2级全自由门架, DUPLEX MAST
2.0t-3.2t 3级全自由门架, TRIPLEX MAST

序号 Item	物料码 Part NO.	名称 Description	数量 Qty	备注或适用车型 Remarks or Serial NO.
A1	RC25M300-600000-000	倾斜油缸 Tilt cylinder	2	H≤4m
A2	RC25N450-600000-000	倾斜油缸 Tilt cylinder	2	4.3≤H≤5m
A3	RC25N550-600000-000	倾斜油缸 Tilt cylinder	2	H≥5.5m
1	RC25M300-600001-000	耳环 Ear ring	2	
2	N30M300-600002-000	球面轴承 Bearing	2	
3	G001152-006000-00	油杯 M6 Oil cup M6	2	
4	G000093-000014-00	垫圈 14 Washer 14	2	
5	G006171-000014-02	螺母 M14×1.5 Nut M14×1.5	2	
6	G005785-014060-00	螺栓 M14×1.5×60 Bolt M14×1.5×60	2	
7	RC25M300-600003-000	活塞杆 Cylinder rod	2	H≤4m
7	RC25N450-600003-000	活塞杆 Cylinder rod	2	4.3≤H≤5m
7	RC25N550-600003-000	活塞杆 Cylinder rod	2	H≥5.5m
8	d35-G00	防尘圈 d30×38×5×6.5 Dust ring d30×38×5×6.5	2	
9	RC25M300-602000-W00	导向套 Guide sleeve	2	
10	G001235-008503P1-00	O形密封圈 85×3.1 O-ring 85×3.1	2	

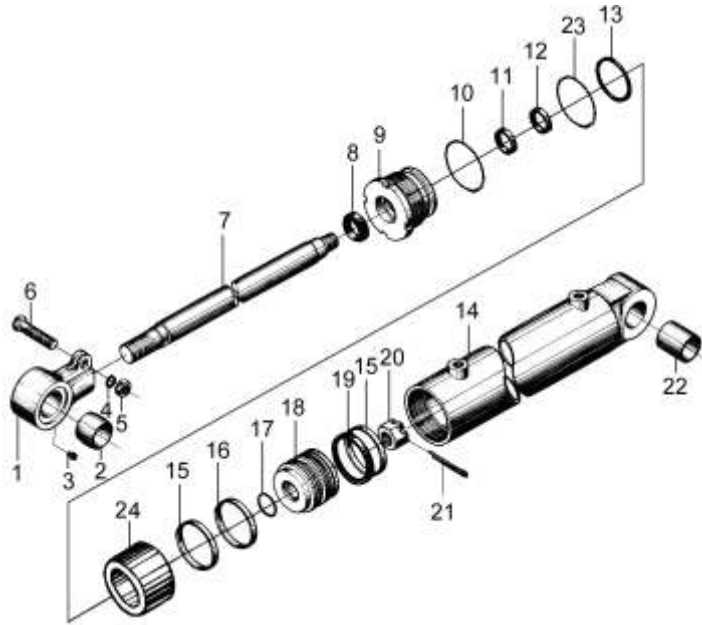


图 8 倾斜油缸
Fig.8 Tilt Cylinder

2.0t-3.2t 2级宽视野门架, SIMPLEX MAST
2.0t-3.2t 2级全自由门架, DUPLEX MAST
2.0t-3.2t 3级全自由门架, TRIPLEX MAST

序号 Item	物料码 Part NO.	名称 Description	数量 Qty	备注或适用车型 Remarks or Serial NO.
11	RU3000350-Z20-G00	U形密封圈 d35 U-seal ring d35	2	
12	RS1300350-T46NA-G00	斯特封 d35 Seal-ring d35	2	
13	G001235-008005P7-00	O形密封圈 80x5.7 O-ring 80x5.7	2	
14	R35M300-601000-W00	缸体 Cylinder body	2	
15	FU0936L0-G00	OSI密封圈 D80 OSI-seal ring D80	4	
16	R35M300-600001-W00	挡圈 80x70x2.5 Snap ring 80x70x2.5	2	
17	G001235-004003P1-00	O形密封圈 40x3.1 O-ring 40x3.1	2	
18	RC25M300-600007-W00	活塞 Piston	2	
19	R35M300-600003-W00	支撑环 80x75x16 Support ring 80x75x16	2	
20	G009459-000030-02	螺母 M30x2 Nut	2	
21	G000091-6P3055-00	销 6.3x55 Pin 6.3x55	2	
22	SF-1-3545-G00	复合衬套 3545 Combination bush	2	
23	N35M300-600001-W00	保护圈 80x71x2.5 Ring	2	
24	RC25M300-600002-000	隔套 Bush	2	H≤4m
24	RC25N450-600002-000	隔套 Bush	2	4.3≤H≤5m

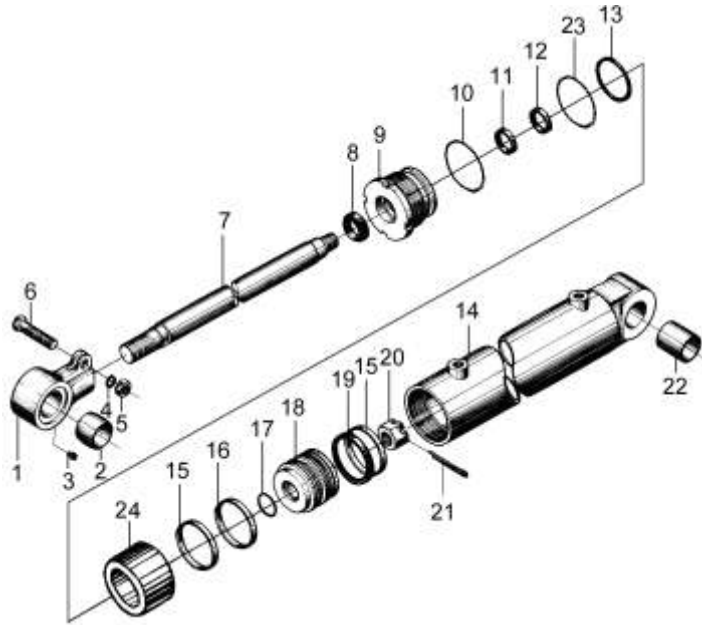
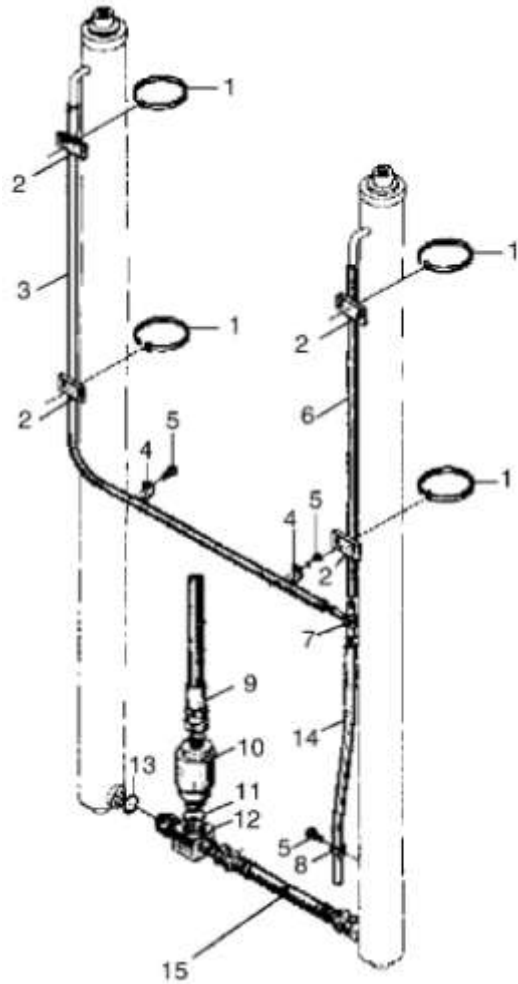


图9 油路系统

Fig.9 Mast piping

2.0t-3.2t 2级宽视野门架 SIMPLEX MAST



序号 Item	物料码 Part NO.	名称 Description	数量 Qty	备注或适用车型 Remarks or Serial NO.
A1	See OPT. Parts List 5	油路系统 Mast piping	1	2.0t-2.5t
A2	See OPT. Parts List 5	油路系统 Mast piping	1	3.0t-3.2t
1	GT-3001-G00	通用尼龙扎带 Clamp-band	4	
2	N30M300-700002-000	镶边 Band	4	
3	See OPT. Parts List 5	回油管 $\phi 14.5 \times \phi 9.5$ Return oil pipe	1	
4	S16M300-700003-000	管夹 Clip	2	
5	N30M300-003000-000	螺栓 M8×1.25×16 Bolt M8×1.25×16	3	
6	See OPT. Parts List 5	回油管 $\phi 14.5 \times \phi 9.5$ Return oil pipe	1	
7	N30M300-700005-000	三通接头 Tee connector	1	
8	N30M300-700008-000	管夹 Clip	1	
9	N15M300-701000-000	油管总成 Hose Assy	1	
10	N25M300-702000-000	限速阀 Speed limiting valve	1	2.0t-2.5t
10	N30M300-702000-000	限速阀 Speed limiting valve	1	3.0t-3.2t
11	JISB2401-P18-G00	O形密封圈 P18 O-ring P18	1	2.0t-2.5t
11	JISB2401-P24-G00	O形密封圈 P24 O-ring P24	1	3.0t-3.2t

选配表 5 <Optional Parts List 5>

序号 Item No.	A1 (2.0t-2.5t)	A2 (3.0t-3.2t)	3	6
起升高度 Lift Height	物料码 Part No..	物料码 Part No..	物料码 Part No..	物料码 Part No..
2500	RC25M250-700000-000	RC30M250-700001-000	R30M250-700001-000	R30M250-700004-000
2700	RC25M270-700000-000	RC30M270-700001-000	R30M270-700001-000	R30M270-700004-000
3000	RC25M300-700000-000	RC30M300-700001-000	R30M300-700001-000	R30M300-700004-000
3300	RC25M330-700000-000	RC30M330-700001-000	R30M330-700001-000	R30M330-700004-000
3500	RC25M350-700000-000	RC30M350-700001-000	R30M350-700001-000	R30M350-700004-000
3600	RC25M360-700000-000	RC30M360-700001-000	R30M360-700001-000	R30M360-700004-000
3700	RC25M370-700000-000	RC30M370-700001-000	R30M370-700001-000	R30M370-700004-000
4000	RC25M400-700000-000	RC30M400-700001-000	R30M400-700001-000	R30M400-700004-000
4300	RC25M430-700000-000	RC30M430-700001-000	R30M430-700001-000	R30M430-700004-000
4500	RC25M450-700000-000	RC30M450-700001-000	R30M450-700001-000	R30M450-700004-000
4800	RC25M480-700000-000	RC30M480-700001-000	R30M480-700001-000	R30M480-700004-000
5000	RC25M500-700000-000	RC30M500-700001-000	R30M500-700001-000	R30M500-700004-000
5500	RC25M550-700000-000	RC30M550-700001-000	R30M550-700001-000	R30M550-700004-000
6000	RC25M600-700000-000	RC30M600-700001-000	R30M600-700001-000	R30M600-700004-000

图 10 起升组件

Fig.10 Lifting part

2.0t-3.2t 2级全自由门架 DUPLEX MAST

序号 Item	物料码 Part NO.	名称 Description	数量 Qty	备注或适用车型 Remarks or Serial NO.
1	See OPT. Parts List 7	外门架 Outside mast	1	Fig12 (2.0t-2.5t)
1	See OPT. Parts List 7	外门架 Outside mast	1	Fig.12 (3.0t-3.2t)
2	See OPT. Parts List 7	内门架 Inside mast	1	Fig12 (2.0t-2.5t)
2	See OPT. Parts List 7	内门架 Inside mast	1	Fig.12 (3.0t-3.2t)
3	See OPT. Parts List 12	油路系统 Mast piping	1	Fig.16 (2.0t-2.5t)
3	See OPT. Parts List 12	油路系统 Mast piping	1	Fig.16 (3.0t-3.2t)
4	N30M300-000012-000	油缸调整垫圈 Washer	2组	
5	G005783-012025-00	螺栓M12x25 Bolt M12x25	6	
6	G000093-000012-00	垫圈12 Washer 12	6	
7	G001152-010001-00	油杯M10x1 Oil cup M10x1	6	
8	RC25M300-001000-000	销轴 Pin shaft	4	
9	G0097P1-000008-00	垫圈8 Washer 8	4	
10		倾斜油缸 Tilt cylinder	2	Fig. 8
11		货叉架总成 Fork carriage assy	1	Fig.13 (2.0t-2.5t)
11		货叉架总成 Fork carriage assy	1	Fig.13 ((3.0t-3.2t)

图 10 起升组件
Fig.10 Lifting part

2.0t-3.2t 2级全自由门架 DUPLEX MAST

序号 Item	物料码 Part NO.	名称 Description	数量 Qty	备注或适用车型 Remarks or Serial NO.
11		侧移架总成 Side shifter assy	1	Fig.14 (2.0t-2.5t)
11		侧移架总成 Side shifter assy	1	Fig.14 ((3.0t-3.2t)
12	RC25N450-001000-000	链轮护板 Protection board	2	
13	N30M300-006000-000	螺栓M14x1.5x30 Bolt M14x1.5x30	8	
14	G000070-012050-00	螺钉M12x50 Screw	1	
15	G0097P1-000012-00	垫圈12 Washer 12	4	
16	G000093-000014-00	垫圈14 Washer 14	2	
17	G005783-014035-00	螺栓M14x35 Bolt M14x35	2	
18	RC25N450-003000-000	链条座 Chain wheel seat	1	
19	G000923-000008-00	螺母M8 Nut M8	4	
20	N25N450-000004-001	U形螺栓 U-Bolt	2	2.0t-2.5t
20	N30N450-000004-001	U形螺栓 U-Bolt	2	3.0t-3.2t
21	G006170-000020-00	螺母M20 Nut M30	2	
22	N30N450-000005-001	螺钉M20x46 Screw M20x46	2	
23	2.5M3H-004000B	油缸支撑 cylinder's support	2	2.0t-2.5t

图 10 起升组件
Fig.10 Lifting part

2.0t-3.2t 2级全自由门架 DUPLEX MAST

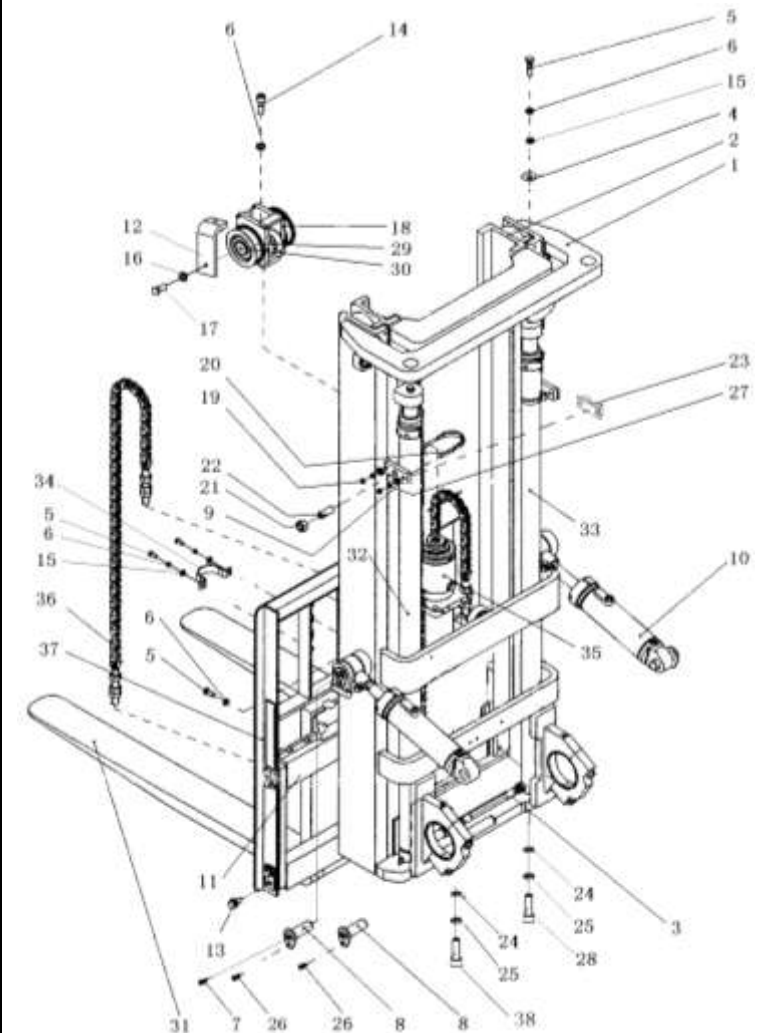
	序号 Item	物料码 Part NO.	名称 Description	数量 Qty	备注或适用车型 Remarks or Serial NO.
	23	3M3H-004000C	油缸支撑 cylinder's support	2	3.0t-3.2t
	24	G0097P1-000010-00	垫圈10 Washer 10	3	
	25	G000093-000010-00	垫圈10 Washer 10	3	
	26	N30M300-004000-000	螺栓M10×1.25×20 Bolt M10×1.25×20	4	
	27	G006170-000008-00	螺母M8 Nut M8	4	
	28	G000070-010030-00	螺钉M10×30 Screw M10×30	2	
	29	780309K-G00	链轮 Chain wheel	2	
	30	G0894P1-000045-00	挡圈45 Snap ring 45	2	
	31		货叉总成 Fork assy	2	见图 IV See Fig.IV
	32	See OPT. Parts List 8	左升降油缸 Lift cylinder,Left	1	Fig.13 (2.0t-2.5t)
	32	See OPT. Parts List 8	左升降油缸 Lift cylinder,Left	1	Fig.13 (3.0t-3.2t)
	33	See OPT. Parts List 9	右升降油缸 Lift cylinder,Right	1	Fig.14 (2.0t-2.5t)
	33	See OPT. Parts List 9	右升降油缸 Lift cylinder,Right	1	Fig.14 (3.0t-3.2t)
	34	RC25N450-000001-000	油缸固定板 Plate	1	2.0t-2.5t
	34	RC30N450-000001-000	油缸固定板 Plate	1	3.0t-3.2t

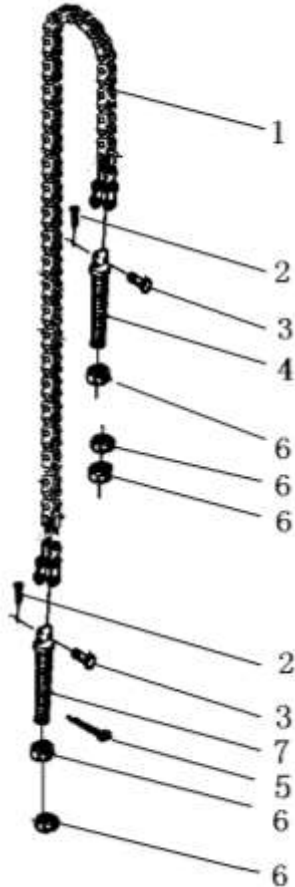
图 10 起升组件
Fig.10 Lifting part

2.0t-3.2t 2级全自由门架 DUPLEX MAST

序号 Item	物料码 Part NO.	名称 Description	数量 Qty	备注或适用车型 Remarks or Serial NO.
	35	短升降油缸 Lift cylinder,Short	1	Fig.15 (2.0t-2.5t)
	35	短升降油缸 Lift cylinder,Short	1	Fig.15 (3.0t-3.2t)
	36	链条总成 Chain assy	2	Fig.11 (2.0t-2.5t)
	36	链条总成 Chain assy	2	Fig.11 ((3.0t-3.2t)
	37	挡货架 Load bracket	1	2.0t-2.5t
	37	挡货架 Load bracket	1	3.0t-3.2t
	38	螺钉M10×35 Screw M10×35	1	

图11 链条总成(短升降油缸)
Fig.11 Chain assy (Lift cylinder,Short)

2.0t-3.2t 2级全自由门架 DUPLEX MAST



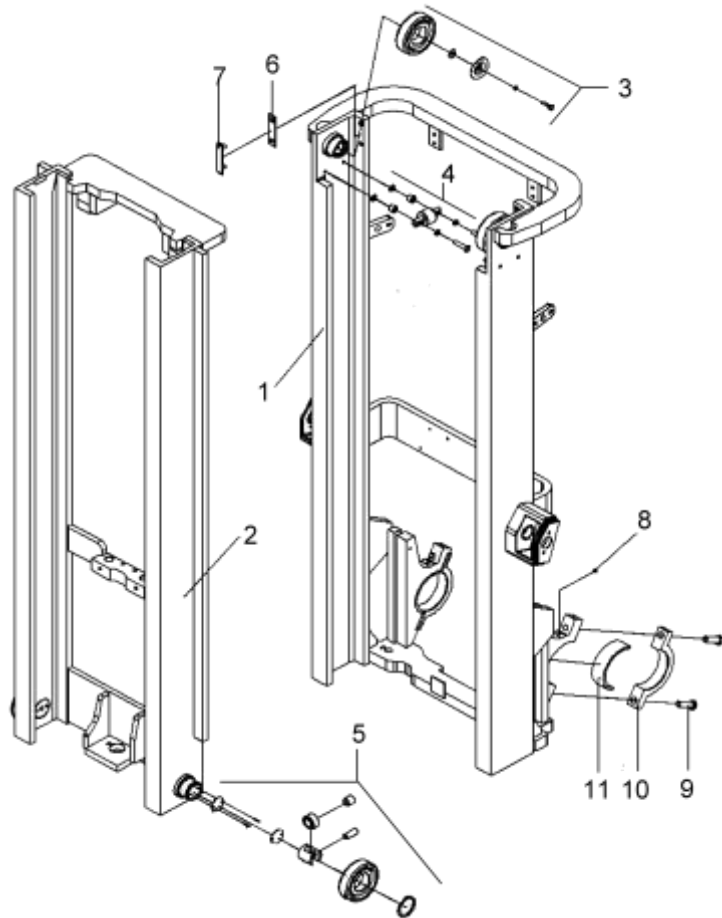
序号 Item	物料码 Part NO.	名称 Description	数量 Qty	备注或适用车型 Remarks or Serial NO.
A1	See OPT. Parts List 6	链条总成 Chain assy	2	包含/INC:1-7 2.0t-2.5t
A2	See OPT. Parts List 6	链条总成 Chain assy	2	包含/INC:1-7 3.0t-3.2t
1	NO PART NO.	板式链LH1623×63 Chain LH1623×63	1	2.0t-2.5t
1	NO PART NO.	板式链 LH1634×63 Chain LH1634×63	1	3.0t-3.2t
2	G000091-003020-00	销3×20 Pin3×20	2	2.0t-2.5t
2	G000091-3P2020-00	销 3.2×20 Pin3.2×20	2	3.0t-3.2t
3	NO PART NO.	销轴 Pin shaft	2	2.0t-2.5t
3	NO PART NO.	销轴 Pin shaft	2	3.0t-3.2t
4	NO PART NO.	链条接头 Connector	1	2.0t-2.5t
4	NO PART NO.	链条接头 Connector	1	3.0t-3.2t
5	G000091-2P5028-00	销 2.5×28 Pin 2.5×28	1	
6	G006171-000020-02	螺母 M20×1.5 Nut M20×1.5	5	
7	NO PART NO.	链条接头 Connector	1	2.0t-2.5t
7	NO PART NO.	链条接头 Connector	1	3.0t-3.2t

选配表 6 <Optional Parts List 6>

序号 Item No	A1 (2.0t-2.5t)	A2 (3.0t-3.2t)
起升高度 Lift Height	物料码 Part No..	代号 Part No..
2000	RC25U200-040000-000	RC30U200-040000-000
2500	RC25U250-040000-000	RC30U250-040000-000
2700	RC25U270-040000-000	RC30U270-040000-000
3000	RC25U300-040000-000	RC30U300-040000-000
3300	RC25U330-040000-000	RC30U330-040000-000
3500	RC25U350-040000-000	RC30U350-040000-000
3600	RC25U360-040000-000	RC30U360-040000-000
3700	RC25U370-040000-000	RC30U370-040000-000
4000	RC25U400-040000-000	RC30U400-040000-000

图 12 门架
Fig.12 Mast

2.0t-3.2t 2级全自由门架 DUPLEX MAST



序号 Item	物料码 Part NO.	名称 Description	数量 Qty	备注或适用车型 Remarks or Serial NO.
1	See OPT. Parts List 7	外门架 Outside mast	1	2.0t-2.5t
1	See OPT. Parts List 7	外门架 Outside mast	1	3.0t-3.2t
2	See OPT. Parts List 7	内门架 Inside mast	1	2.0t-2.5t
2	See OPT. Parts List 7	内门架 Inside mast	1	3.0t-3.2t
3	3U3H-002000A	纵向滚轮组 Cross roller assy	2 组	图 II Fig. II
4	X25M300-302000-000	侧滚轮组 Side roller assy	2 组	图III Fig.III
5	3M3H-302000C	复合滚轮组 Complex roller assy	2 组	图 I Fig. I
6	N30M300-000015-000	调整垫片 Ajusting shim	2 组	
7	N30M300-000014-000	导轨衬垫 Washer	2	
8	G001152-010001-00	油杯 M10×1 Nipple Grease M10×1	6	
9	N30M300-005000-000	螺栓 M18×1.5×55 Bolt M18×1.5×55	4	
10	N30M300-000005-001	轴承盖 Bearing cap	2	
11	N30M300-000006-000	轴瓦 Axle bush	2	

选配表 7 <Optional Parts List 7>

序号 Item No.	1 (2.0t-2.5t)	1 (3.0t-3.2t)	2(2.0t-2.5t)	2 (3.0t-3.2t)
起升高度 Lift Height	物料码 Part No..	物料码 Part No..	物料码 Part No..	物料码 Part No..
2000	RC25U200-100000-001	RC30U200-100000-001	RC25U200-200000-000	RC30U200-200000-000
2500	RC25U250-100000-001	RC30U250-100000-001	RC25U250-200000-000	RC30U250-200000-000
2700	RC25U270-100000-001	RC30U270-100000-001	RC25U270-200000-000	RC30U270-200000-000
3000	RC25U300-100000-001	RC30U300-100000-001	RC25U300-200000-000	RC30U300-200000-000
3300	RC25U330-100000-001	RC30U330-100000-001	RC25U330-200000-000	RC30U330-200000-000
3500	RC25U350-100000-001	RC30U350-100000-001	RC25U350-200000-000	RC30U350-200000-000
3600	RC25U360-100000-001	RC30U360-100000-001	RC25U360-200000-000	RC30U360-200000-000
3700	RC25U370-100000-001	RC30U370-100000-001	RC25U370-200000-000	RC30U370-200000-000
4000	RC25U400-100000-001	RC30U400-100000-001	RC25U400-200000-000	RC30U400-200000-000

图 13 货叉架总成
Fig.13 Fork carriage assy

2.0t-3.2t 2级全自由门架 3级全自由门架
2.0t-3.2t DUPLEX MAST TRIPLEX MAST

序号 Item	物料码 Part NO.	名称 Description	数量 Qty	备注或适用车型 Remarks or Serial NO.
A3	RC25U300-300000-002	货叉架总成 Fork shelf assy	1	2.0t-2.5t DUPLEX MAST
A4	RC30U300-300000-002	货叉架总成 Fork shelf assy	1	3.0t-3.2t DUPLEX MAST
A5	RC25N450-300000-002	货叉架总成 Fork shelf assy	1	2.0t-2.5t TRIPLEX MAST
A6	RC30N450-300000-002	货叉架总成 Fork shelf assy	1	3.0t-3.2t TRIPLEX MAST
1	RC25U300-301000-002	货叉架 Fork carriage	1	2.0t-2.5t DUPLEX MAST
1	RC30U300-301000-002	货叉架 Fork carriage	1	3.0t-3.2t DUPLEX MAST
1	RC25M450-301000-002	货叉架 Fork carriage	1	2.0t-2.5t TRIPLEX MAST
1	RC30N450-301000-002	货叉架 Fork carriage	1	3.0t-3.2t TRIPLEX MAST
2	3M3H-005000C	纵向滚轮组 Cross roller assy	4组	图II Fig. II
3	3M3H-303000-003	复合滚轮组 Complex roller assy	2组	图I Fig. I
4	X25M300-302000-000	侧滚轮组 Side roller assy	4组	图III Fig. III

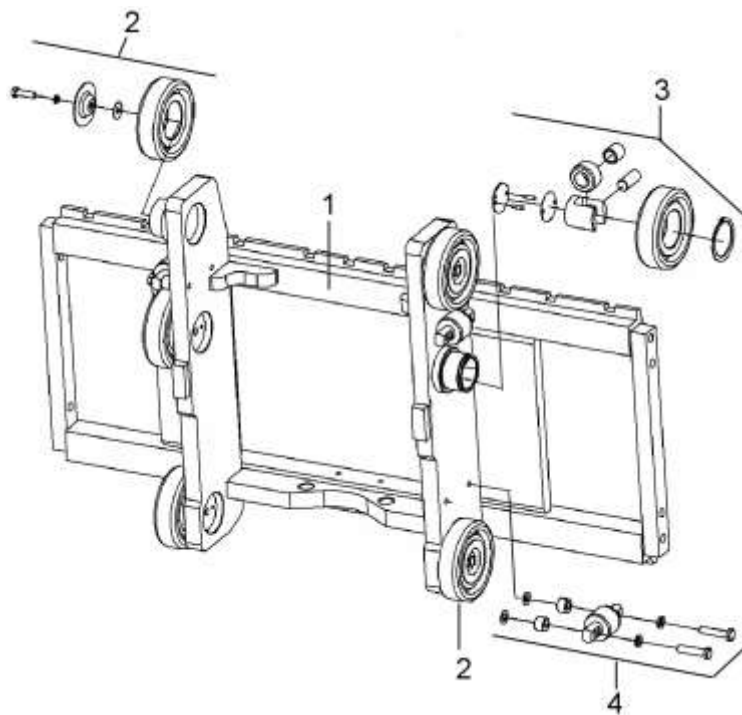


图 14 侧移架总成
Fig.14 Side shifter assy

2.0t-3.2t 2级全自由门架 3级全自由门架
2.0t-3.2t DUPLEX MAST TRIPLEX MAST

序号 Item	物料码 Part NO.	名称 Description	数量 Qty	备注或适用车型 Remarks or Serial NO.
A3	RC25C300-300000-002	侧移架总成 Side shifter assy	1	2.0t-2.5t DUPLEX MAST
A4	RC30C300-300000-002	侧移架总成 Side shifter assy	1	3.0t-3.2t DUPLEX MAST
A5	RC25V450-300000-002	侧移架总成 Side shifter assy	1	2.0t-2.5t TRIPLEX MAST
A6	RC30V450-300000-002	侧移架总成 Side shifter assy	1	3.0t-3.2t TRIPLEX MAST
1	RC25C300-301000-000	叉架体 Fork carriage	1	2.0t-2.5t DUPLEX MAST
1	RC30C300-301000-000	叉架体 Fork carriage	1	3.0t-3.2t DUPLEX MAST
1	RC25V450-301000-000	叉架体 Fork carriage	1	2.0t-2.5t TRIPLEX MAST
1	RC30V450-301000-000	叉架体 Fork carriage	1	3.0t-3.2t TRIPLEX MAST
2	3M3H-005000C	纵向滚轮组 Cross roller assy	4组	图 II Fig. II
3	X25M300-302000-000	侧滚轮组 Side roller assy	4组	图III Fig.III
4	3M3H-303000-003	复合滚轮组 Complex roller assy	2组	图 I Fig. I
5	1.4QS1-000006	挡块 Block	2	
6	S16V450-300001-000	塞铁 Plug	3	
7	RC25V450-302000-000	侧移货叉架 Side shift carriage	1	2.0t-2.5t

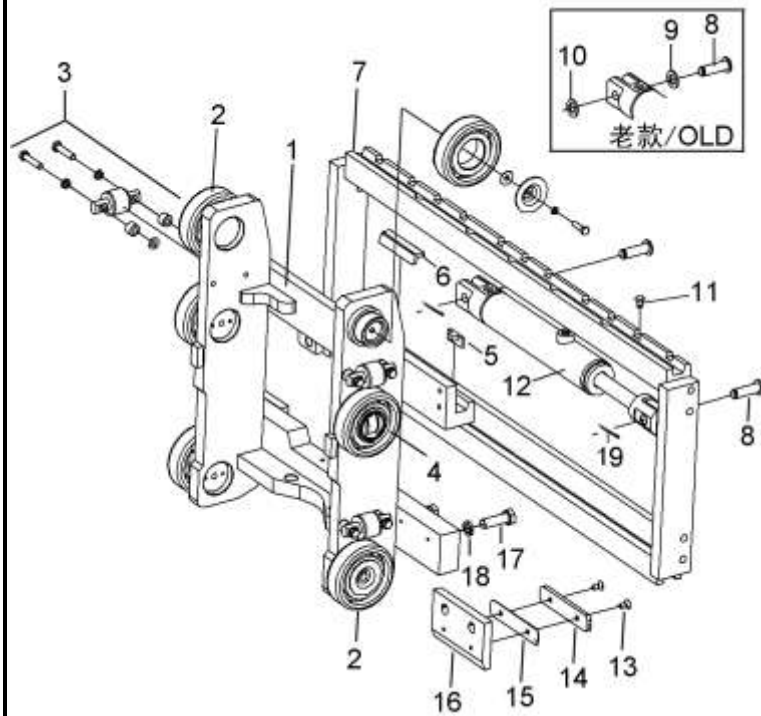


图 14 侧移架总成
Fig.14 Side shifter assy

2.0t-3.2t 2级全自由门架 3级全自由门架
2.0t-3.2t DUPLEX MAST TRIPLEX MAST

序号 Item	物料码 Part NO.	名称 Description	数量 Qty	备注或适用车型 Remarks or Serial NO.
7	RC30V450-302000-000	侧移货叉架 Side shift carriage	1	3.0t-3.2t
8	S16V450-300005-000	轴 Shaft	2	≤2012-08
8	S16V450-300005-001	轴 Shaft	2	≥2012-09
9	G0097P1-000016-00	垫圈 16 Washer 16	2	≤2012-08
10	G0894P1-000016-00	挡圈 16 Snap ring 16	2	≤2012-08
11	G001152-006000-00	油杯 M6 Oil cup M6	5	
12	S16V450-303000-000	侧移油缸 Side shift cylinder	1	
13	G000068-008016-00	螺钉 M8×16 Screw M8×16	4	
14	S16V450-300002-000	下滑块 Block,down	2	
15	S16V450-300008-000	调整垫 Ajusting shim	2	
16	S16V450-300006-000	挂钩板 Plate	2	
17	G005786-016050-01	螺栓 M16×1.5×50 Bolt M16×1.5×50	4	
18	G000093-000016-00	垫圈 16 Washer 16	4	
19	G000091-3P2030-00	开口销 Split pin	2	≥2012-09

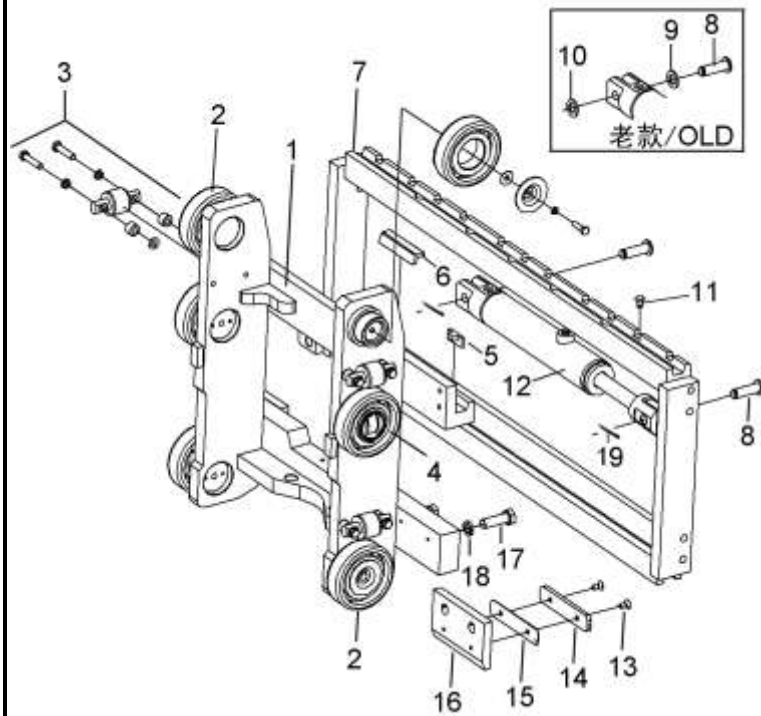
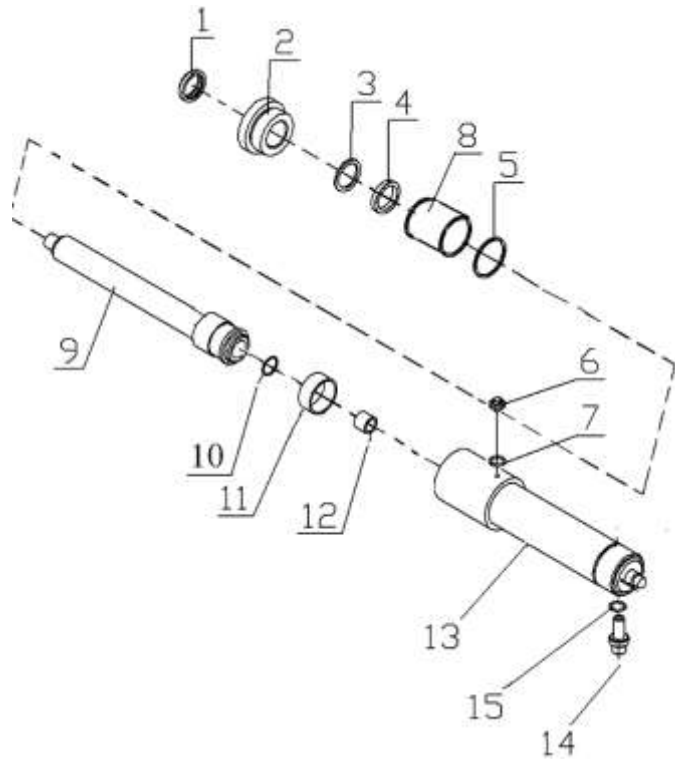


图 15 右升降油缸 Lift cylinder,Right
Fig.15 左升降油缸 Lift cylinder,Left

2.0t-2.5t 2级全自由门架 DUPLEX MAST

序号 Item	物料码 Part NO.	名称 Description	数量 Qty	备注或适用车型 Remarks or Serial NO.
A1	See OPT. Parts List 8	右升降油缸 Lift cylinder,Right	1	INC:1-15
A2	See OPT. Parts List 8	左升降油缸 Lift cylinder,Left	1	INC:1-13
1	CL0066C1-G00	LBH防尘圈d35 Dust seal ring d35	2	
2	RC25U300-400001-W01	缸盖 Cylinder cover	2	
3	2.5U3H-400001A	挡片 Snap ring	2	
4	FU0424K0-G00	ISI密封圈d35 ISI-seal ring d35	2	
5	G001235-005203P5-00	O形密封圈52×3.5 O-ring 52×3.5	2	
6	2.5CDJ-32-00-07	放气螺塞 Plug	2	
7	G001235-001602P4-00	O型密封圈 16×2.4 O-ring 16×2.4	2	
8	SF-1-3545-G00	复合衬套3545 Sleeve 3545	2	
9	See OPT. Parts List 8	右柱塞杆总成 Pole stopper rod assy, R	1	
9	See OPT. Parts List 8	左柱塞杆总成 Pole stopper rod Assy, L	1	
10	G0895P1-000024-00	挡圈24 Snap ring 24	2	
11	2.5U3H-400004	支承环 Support ring	2	
12	RC25U300-400004-W00	阀套 Bushing	2	

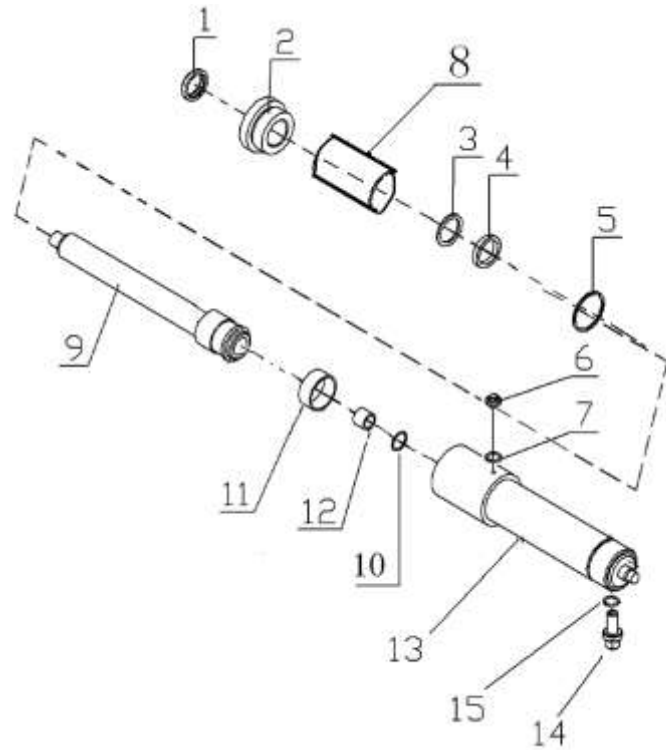


选配表 8 <Optional Parts List 8> (2.0t-2.5t)

序号 Item No.	A1	A2	13	9 (Right)	9 (Left)
起升高度 Lift Height	物料码 Part No..	物料码 Part No..	物料码 Part No..	物料码 Part No..	物料码 Part No...
2000	RC25U200-400000-000	RC25U200-500000-000	RC25U200-401000-W01	RC25U200-402000-W01	RC25U200-502000-W01
2500	RC25U250-400000-000	RC25U250-500000-000	RC25U250-401000-W01	RC25U250-402000-W01	RC25U250-502000-W01
2700	RC25U270-400000-000	RC25U270-500000-000	RC25U270-401000-W01	RC25U270-402000-W01	RC25U270-502000-W01
3000	RC25U300-400000-000	RC25U300-500000-000	RC25U300-401000-W01	RC25U300-402000-W01	RC25U300-401000-W01
3300	RC25U330-400000-000	RC25U330-500000-000	RC25U330-401000-W01	RC25U330-402000-W01	RC25U330-502000-W01
3500	RC25U350-400000-000	RC25U350-500000-000	RC25U350-401000-W01	RC25U350-402000-W01	RC25U350-502000-W01
3600	RC25U360-400000-000	RC25U360-500000-000	RC25U360-401000-W01	RC25U360-402000-W01	RC25U360-502000-W01
3700	RC25U370-400000-000	RC25U370-500000-000	RC25U370-401000-W01	RC25U370-402000-W01	RC25U370-502000-W01
4000	RC25U400-400000-000	RC25U400-500000-000	RC25U400-401000-W01	RC25U400-402000-W01	RC25U400-502000-W01

图 16 右升降油缸 Lift cylinder,Right
Fig.16 左升降油缸 Lift cylinder,Left

3.0t-3.2t 2级全自由门架 DUPLEX MAST



序号 Item	物料码 Part NO.	名称 Description	数量 Qty	备注或适用车型 Remarks or Serial NO.
A1	See OPT. Parts List 9	右升降油缸 Lift cylinder,Right	1	INC:1-15
A2	See OPT. Parts List 9	左升降油缸 Lift cylinder,Left	1	INC:1-13
1	CL0077C2-G00	LBH 防尘圈 d40 Dust seal ring d40	2	
2	RC30U300-400001-W00	缸盖 Cylinder cover	2	
3	RC30U300-400006-W00	挡片 Snap ring	2	
4	FU0497K0-G00	ISI 密封圈 d40 ISI-seal ring d40	2	
5	G001235-005603P5-00	O 形密封圈 56x3.5 O-ring 56x3.5	2	
6	2.5CDJ-32-00-07	放气螺塞 Plug	2	
7	G001235-001602P4-00	O 型密封圈 16x2.4 O-ring 16x2.4	2	
8	RC30U300-400002-W01	导套 Spacer	2	
9	See OPT. Parts List 9	右柱塞杆总成 Pole stopper rod assy,R	2	
9	See OPT. Parts List 9	左柱塞杆总成 Pole stopper rod assy,L	2	
10	G0895P1-000024-00	挡圈 24 Snap ring 24	2	
11	2.5U3H-400004	支承环 Support ring	2	
12	N25M300-400005-W00	阀套 Bush	2	

选配表 9 <Optional Parts List 9> (3.0t-3.2t)

序号 Item No.	A1	A2	13	9 (Right)	9 (Left)
起升高度 Lift Height	物料码 Part No..	物料码 Part No..	物料码 Part No..	物料码 Part No..	物料码 Part No...
2000	RC30U200-400000-000	RC30U200-500000-000	RC30U200-401000-W01	RC30U200-402000-W01	RC30U200-502000-W01
2500	RC30U250-400000-000	RC30U250-500000-000	RC30U250-401000-W01	RC30U250-402000-W01	RC30U250-502000-W01
2700	RC30U270-400000-000	RC30U270-500000-000	RC30U270-401000-W01	RC30U270-402000-W01	RC30U270-502000-W01
3000	RC30U300-400000-000	RC30U300-500000-000	RC30U300-401000-W01	RC30U300-402000-W01	RC30U300-401000-W01
3300	RC30U330-400000-000	RC30U330-500000-000	RC30U330-401000-W01	RC30U330-402000-W01	RC30U330-502000-W01
3500	RC30U350-400000-000	RC30U350-500000-000	RC30U350-401000-W01	RC30U350-402000-W01	RC30U350-502000-W01
3600	RC30U360-400000-000	RC30U360-500000-000	RC30U360-401000-W01	RC30U360-402000-W01	RC30U360-502000-W01
3700	RC30U370-400000-000	RC30U370-500000-000	RC30U370-401000-W01	RC30U370-402000-W01	RC30U370-502000-W01
4000	RC30U400-400000-000	RC30U400-500000-000	RC30U400-401000-W01	RC30U400-402000-W01	RC30U400-502000-W01

图 17 短升降油缸
Fig.17 Lift cylinder,Short

2.0t-3.2t 2 级全自由门架 3 级全自由门架
2.0t-3.2t DUPLEX MAST TRIPLEX MAST

序号 Item	物料码 Part NO.	名称 Description	数量 Qty	备注或适用车型 Remarks or Serial NO.
A1	See OPT. Parts List 10	短升降油缸 Lift cylinder,Short	1	2.0t-2.5t DUPLEX MAST
A2	See OPT. Parts List 10	短升降油缸 Lift cylinder,Short	1	3.0t-3.2t DUPLEX MAST
B1	See OPT. Parts List 11	短升降油缸 Lift cylinder,Short	1	2.0t-2.5t TRIPLEX MAST
B2	See OPT. Parts List 11	短升降油缸 Lift cylinder,Short	1	3.0t-3.2t TRIPLEX MAST
1	RC25N450-802000-W00	安全阀 safety valve	1	2.0t-2.5t
1	RC30N450-802000-W00	安全阀 safety valve	1	3.0t-3.2t
2	See OPT. Parts List 10	缸体 Cylinder body	1	2.0t-2.5t DUPLEX MAST
2	See OPT. Parts List 10	缸体 Cylinder body	1	3.0t-3.2t DUPLEX MAST
2	See OPT. Parts List 11	缸体 Cylinder body	1	2.0t-2.5t TRIPLEX MAST
2	See OPT. Parts List 11	缸体 Cylinder body	1	3.0t-3.2t TRIPLEX MAST
3	G0893P1-000028-00	挡圈 28 Snap ring 28	1	
4	RC25N450-803000-W00	单向阀 check valve	1	
5	G001235-002602P4-00	O 形密封圈 26×2.4 O-ring 26×2.4	1	
6	RC25N450-800002-G00	WR 抗磨环 75×70×20 Antiwear ring 75×70×20	1	2.0t-2.5t
6	RC30N450-800002-G00	WR 抗磨环 85×79×25 Antiwear ring 85×79×25	1	3.0t-3.2t

图 17 短升降油缸
Fig.17 Lift cylinder,Short

2.0t-3.2t 2级全自由门架 3级全自由门架
2.0t-3.2t DUPLEX MAST TRIPLEX MAST

序号 Item	物料码 Part NO.	名称 Description	数量 Qty	备注或适用车型 Remarks or Serial NO.
7	J000982-000006-00	垫圈 6 Washer 6	1	
8	G000818-006008-00	螺钉 M6×8 Bolt M6×8	1	
9	RC25N450-800005-G00	格莱圈 D75 greggains circle D75	1	2.0t-2.5t
9	RC30N450-800005-G00	格莱圈 D85 greggains circle D85	1	3.0t-3.2t
10	RC25N450-800004-W00	活塞 Piston	1	2.0t-2.5t
10	RC30N450-800004-W00	活塞 Piston	1	3.0t-3.2t
11	RC25N450-800005-W00	钢丝挡圈 φ3 wire ring φ3	1	
12	RC25N450-800006-W00	钢管 steel tube	1	
13	See OPT. Parts List 10	活塞杆 Piston rod	1	2.0t-2.5t DUPLEX MAST
13	See OPT. Parts List 10	活塞杆 Piston rod	1	3.0t-3.2t DUPLEX MAST
13	See OPT. Parts List 11	活塞杆 Piston rod	1	2.0t-2.5t TRIPLEX MAST
13	See OPT. Parts List 11	活塞杆 Piston rod	1	3.0t-3.2t TRIPLEX MAST
14	G001235-007503P1-00	O形密封圈 75×3.1 O-ring 75×3.1	1	2.0t-2.5t
14	G001235-008503P1-00	O形密封圈 85×3.1 O-ring 85×3.1	1	3.0t-3.2t
15	RC25N450-800001-G00	复合衬套 65×35 composite bushing	1	2.0t-2.5t

选配表 10 <Optional Parts List 10>
<2.0t-3.2t 2级全自由门架 2.0t-3.2t DUPLEX MAST >

	2.0t-2.5t DUPLEX MAST			3.0t-3.2t DUPLEX MAST		
序号 Item No.	A1	2	13	A2	2	13
起升高度 Lift Height	物料码 Part No..	物料码 Part No..	物料码 Part No..	物料码 Part No..	物料码 Part No..	物料码 Part No..
2000	RC25U200-800000-000	RC25U200-801000-W00	RC25U200-800001-W00	RC30U200-800000-000	RC30U200-801000-W00	RC30U200-800001-W00
2500	RC25U250-800000-000	RC25U250-801000-W00	RC25U250-800001-W00	RC30U250-800000-000	RC30U250-801000-W00	RC30U250-800001-W00
2700	RC25U270-800000-000	RC25U270-801000-W00	RC25U270-800001-W00	RC30U270-800000-000	RC30U270-801000-W00	RC30U270-800001-W00
3000	RC25N450-800000-000	RC25N450-801000-W00	RC25N450-800001-W00	RC30N450-800000-000	RC30N450-801000-W00	RC30N450-800001-W00
3300	RC25U330-800000-000	RC25U330-801000-W00	RC25U330-800001-W00	RC30U330-800000-000	RC30U330-801000-W00	RC30U330-800001-W00
3500	RC25U350-800000-000	RC25U350-801000-W00	RC25U350-800001-W00	RC30U350-800000-000	RC30U350-801000-W00	RC30U350-800001-W00
3600	RC25U360-800000-000	RC25U360-801000-W00	RC25U360-800001-W00	RC30U360-800000-000	RC30U360-801000-W00	RC30U360-800001-W00
3700(RC25U370-800000-000	RC25U370-801000-W00	RC25U370-800001-W00	RC30U370-800000-000	RC30U370-801000-W00	RC30U370-800001-W00
4000	RC25U400-800000-000	RC25U400-801000-W00	RC25U400-800001-W00	RC30U400-800000-000	RC30U400-801000-W00	RC30U400-800001-W00

选配表 11 <Optional Parts List 11>
<2.0t-3.2t 3级全自由门架 2.0t-3.2t TRIPLEX MAST>

	2.0t-2.5t TRIPLEX MAST			3.0t-3.2t TRIPLEX MAST		
序号 Item No.	B1	2	13	B2	2	13
起升高度 Lift Height	物料码 Part No..	物料码 Part No..	物料码 Part No..	物料码 Part No..	物料码 Part No..	物料码 Part No..
4000	RC25N400-800000-000	RC25N400-801000-W00	RC25N400-800001-W00	RC30N400-800000-000	RC30N400-801000-W00	RC30N400-800001-W00
4300	RC25N430-800000-000	RC25N430-801000-W00	RC25N430-800001-W00	RC30N430-800000-000	RC30N430-801000-W00	RC30N430-800001-W00
4500	RC25N450-800000-000	RC25N450-801000-W00	RC25N450-800001-W00	RC30N450-800000-000	RC30N450-801000-W00	RC30N450-800001-W00
4700	RC25N470-800000-000	RC25N470-801000-W00	RC25N470-800001-W00	RC30N470-800000-000	RC30N470-801000-W00	RC30N470-800001-W00
4800	RC25N480-800000-000	RC25N480-801000-W00	RC25N480-800001-W00	RC30N480-800000-000	RC30N480-801000-W00	RC30N480-800001-W00
5000	RC25N500-800000-000	RC25N500-801000-W00	RC25N500-800001-W00	RC30N500-800000-000	RC30N500-801000-W00	RC30N500-800001-W00
5500	RC25N550-800000-000	RC25N550-801000-W00	RC25N550-800001-W00	RC30N550-800000-000	RC30N550-801000-W00	RC30N550-800001-W00
6000(RC25N600-800000-000	RC25N600-801000-W00	RC25N600-800001-W00	RC30N600-800000-000	RC30N600-801000-W00	RC30N600-800001-W00
6500	RC25N650-800000-000	RC25N650-801000-W00	RC25N650-800001-W00	RC30N650-800000-000	RC30N650-801000-W00	RC30N650-800001-W00
7000	RC25N700-800000-000	RC25N700-801000-W00	RC25N700-800001-W00	RC30N700-800000-000	RC30N700-801000-W00	RC30N700-800001-W00

图 18 油路系统
Fig.18 Mast piping

2t-3.5t 2级全自由门架 DUPLEX MAST

序号 Item	物料码 Part No.	名称 Description	数量 Qty	备注或适用车型 Remarks or Serial NO.
A1	See OPT. Parts List 12	油路系统 Mast piping	1	2.0t-2.5t
A2	See OPT. Parts List 12	油路系统 Mast piping	1	3.0t-3.2t
1	RC25U300-703000-001	油管总成 Oil pipe assy	1	
2	RC25N450-201000-000	90°管接头 90°Connector	1	
2-1	NO PART NO.	接头 Connector	1	
2-2	G001235-002402P4-00	O形密封圈 24×2.4 O-ring 24×2.4	1	
3	RC25U300-704000-000	三通接头 Tee fitting	1	
4	G001235-002002P4-00	O形密封圈 20×2.4 O-ring 20×2.4	1	
5	G001235-002402P4-00	O形密封圈 24×2.4 O-ring 24×2.4	2	
6	RC25U300-700002-000	直通管接头 Nipple	1	
7	XSF2-F16L-2T-G00	单向限速阀 Speed limiting valve	1	2.0t-2.5t
7	XSF2-F16L-3T-G00	单向限速阀 Speed limiting valve	1	3.0t-3.2t
8	RC25U300-701000-000	油管总成 Oil pipe assy	1	
9	See OPT. Parts List 12	胶管接头 Oil pipe assy	1	2.0t-2.5t
9	See OPT. Parts List 12	胶管接头 Oil pipe assy	1	3.0t-3.2t

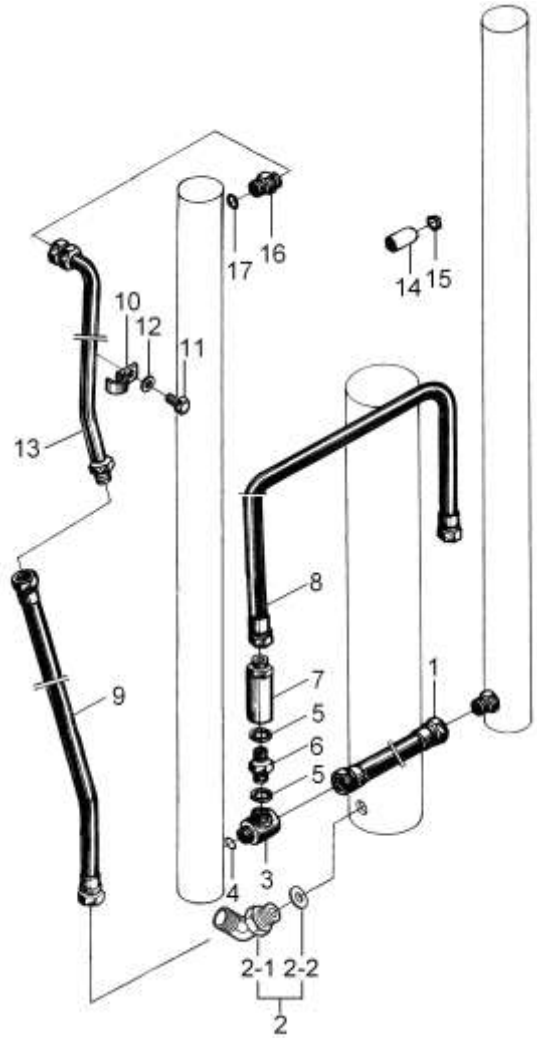


图 18 油路系统
Fig.18 Mast piping

2t-3.5t 2级全自由门架 DUPLEX MAST

序号 Item	物料码 Part No.	名称 Description	数量 Qty	备注或适用车型 Remarks or Serial NO.
10	2.5U3H-600004	管夹 Clip	1	
11	N30M300-003000-000	螺栓 M8×1.25×16 Bolt M8×1.25×16	1	
12	G0097P1-000006-00	垫圈 8 Washer 8	3	
13	See OPT. Parts List 12	钢油管 Oil pipe	1	
14	N30U300-700007-000	堵塞 Plug	1	
15	2.5U3H-601000A	双钢丝环箍 18 Clamp 18	1	
16	2.5U3H-600006A	直通管接头 Nipple	1	2.0t-2.5t
16	N30N450-200003-000	直通管接头 Nipple	1	3.0t-3.2t
17	J000982-000018-00	垫圈 18 Washer 18	1	2.0t-2.5t
17	J000982-000022-00	垫圈 22 Washer 22	1	3.0t-3.2t

选配表 12 <Optional Parts List 12>

序号 Item No	A1 (2.0t-2.5t)	A2 (3.0t-3.2t)	9 (2.0t-2.5t)	9 (3.0t-3.2t)	13 (2.0t-2.5t)	13 (3.0t-3.2t)
起升高度 Lift Height	物料码 Part No.	物料码 Part No.	物料码 Part No.	物料码 Part No.	物料码 Part No.	物料码 Part No.
2000	RC25U200-700000-000	RC30U200-700000-000	RC25U200-700001-000	RC30U200-700001-000	RC25U200-701000-000	
2500	RC25U250-700000-000	RC30U250-700000-000	RC25U250-700001-000	RC30U250-700001-000	2.5U2.5H-501000A	
2700	RC25U250-700000-000	RC30U250-700000-000	RC25U250-700001-000	RC30U250-700001-000	2.5U2.7H-501000A	
3000	RC25U300-700000-000	RC30U300-700000-000	RC25U300-700001-000	RC30U300-700001-000	2.5U3H-601000A	
3300	RC25U330-700000-000	RC30U330-700000-000	RC25U300-700001-000	RC30U300-700001-000	2.5U3.3H-501000A	
3500	RC25U350-700000-000	RC30U350-700000-000	RC25U300-700001-000	RC30U300-700001-000	2.5U3.5H-501000A	
3600	RC25U360-700000-000	RC30U360-700000-000	RC25U300-700001-000	RC30U300-700001-000	2.5U3.6H-501000A	3U3.6H-401000A
3700	RC25U370-700000-000	RC30U370-700000-000	RC25U300-700001-000	RC30U300-700001-000	2.5U3.7H-501000A	3U3.7H-401000A
4000	RC25U400-700000-000	RC30U400-700000-000	RC25U300-700001-000	RC30U300-700001-000	2.5U4H-501000A	3U4H-401000A

图 19 起升组件
Fig.19 Mast piping

2.0t-3.2t 3级全自由门架 TRIPLEX MAST

序号 Item	物料码 Part NO.	名称 Description	数量 Qty	备注或适用车型 Remarks or Serial NO.
1	See OPT. Parts List 14	门架 Mast	1	Fig.21 (2.0t-2.5t)
1	See OPT. Parts List 14	门架 Mast	1	Fig.21 (3.0t-3.2t)
2	See OPT. Parts List 15	油路系统 Mast piping	1	Fig.22 (2.0t-2.5t)
2	See OPT. Parts List 15	油路系统 Mast piping	1	Fig..22 (3.0t-3.2t)
3	780408-G00	链轮 Chain wheel	2	2.0t-2.5t
3	780408H-G00	链轮 Chain wheel	2	3.0t-3.2t
4	G0894P1-000040-00	挡圈 40 Washer 40	2	
5	G005785-012055-01	螺栓M12×1.25×80 Bolt M12×1.25×80	2	
6	G000093-000012-00	垫圈12 Washer 12	6	
7	G0097P1-000012-00	垫圈12 Washer 12	4	
8	G006170-000008-00	螺母 M8 Nut M8	4	
9	See OPT. Parts List 13	链条总成 Chain assy	2	Fig.20
9	See OPT. Parts List 13	链条总成 Chain assy	2	Fig.20
10		倾斜油缸 Tilt cylinder	2	Fig.8
11		货叉架总成 Fork shelf assy	1	Fig.13 (2.0t-2.5t)

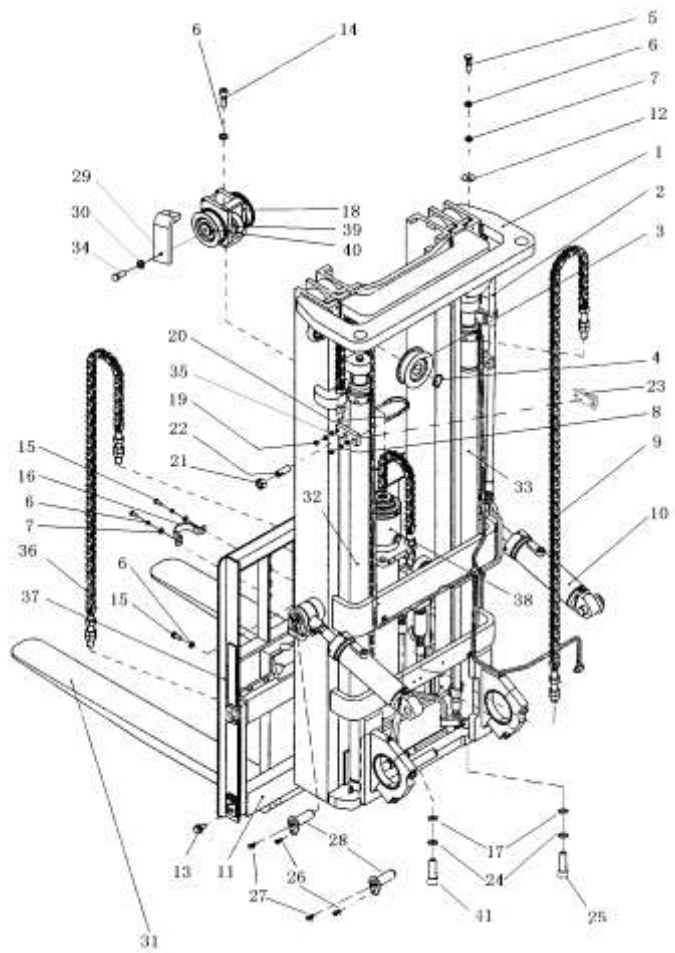


图 19 起升组件
Fig.19 Mast piping

2.0t-3.2t 3级全自由门架 TRIPLEX MAST

序号 Item	物料码 Part NO.	名称 Description	数量 Qty	备注或适用车型 Remarks or Serial NO.
11		货叉架总成 Fork shelf assy	1	Fig.13 ((3.0t-3.2t)
11		侧移架总成 Side shifter assy	1	Fig.14 (2.0t-2.5t)
11		侧移架总成 Side shifter assy	1	Fig.14 ((3.0t-3.2t)
12	N30M300-000012-000	油缸调整垫圈 Washer	2	
13	N30M300-006000-000	螺栓 M14×1.5×30 Bolt M14×1.5×30	8	
14	G000070-010035-00	螺钉 M12×50 Screw M12×50	1	
15	G005783-012025-00	螺栓 M12×25 Bolt M12×25	3	
16	RC25N450-000001-000	油缸固定板 Plate	1	
16	RC30N450-000001-000	油缸固定板 Plate	1	
17	G0097P1-000010-00	垫圈 10 Washer 10	3	
18	RC25N450-003000-000	链条座 Chain wheel seat	1	
19	G000923-000008-00	螺母 M8 Nut M8	4	
20	N25N450-000004-001	U形螺栓 U-Bolt	2	2.0t-2.5t
20	N30N450-000004-001	U形螺栓 U-Bolt	2	3.0t-3.2t
21	G006170-000020-00	螺母 M20 Nut M20	2	

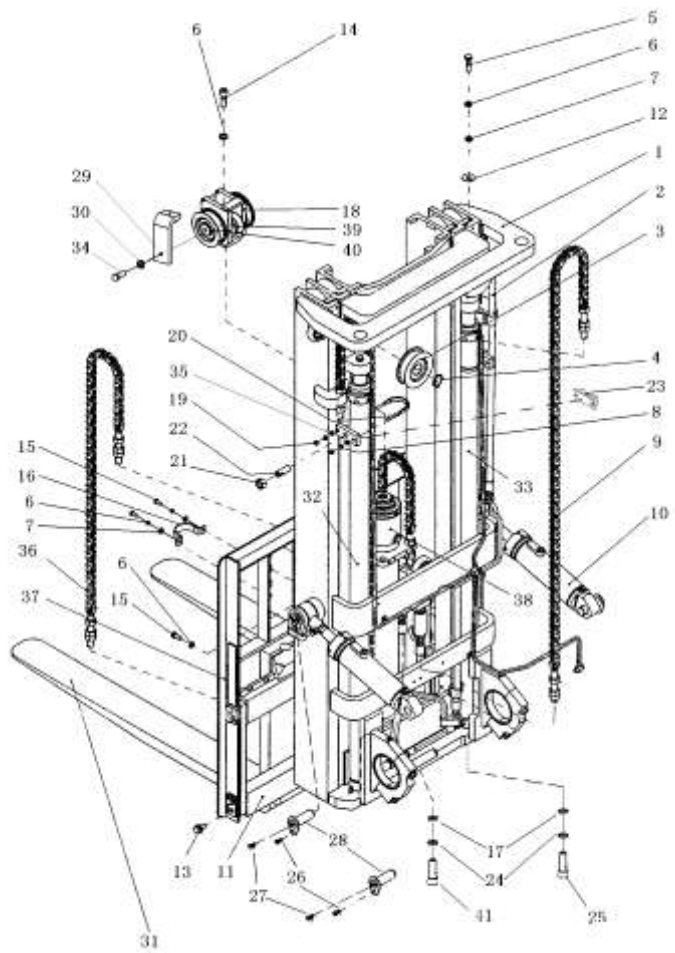


图 19 起升组件
Fig.19 Mast piping

2.0t-3.2t 3级全自由门架 TRIPLEX MAST

序号 Item	物料码 Part NO.	名称 Description	数量 Qty	备注或适用车型 Remarks or Serial NO.
22	N30N450-000005-001	螺钉 M20×46 Screw M20×46	2	
23	2.5M3H-004000B	油缸支撑 cylinder's support	2	2.0t-2.5t
23	3M3H-004000C	油缸支撑 cylinder's support	2	3.0t-3.2t
24	G000093-000010-00	垫圈 10 Washer 10	3	
25	G000070-010030-00	螺钉 M10×30 Screw M10×30	2	
26	N30M300-004000-000	螺栓M10×1.25×20 Bolt M10×1.25×20	4	
27	G001152-010001-00	油杯M10×1 Nipple Grease M10×1	4	
28	RC25M300-001000-000	销轴 Pin shaft	4	
29	RC25N450-001000-000	链轮护板 Protection board	2	
30	G000093-000014-00	垫圈14 Washer 14	2	
31		货叉总成 Fork assy	2	见图 IV See Fig.IV
32	See OPT. Parts List 4	左升降油缸 Lift cylinder,Left	1	Fig.7 (2.0t-2.5t)
32	See OPT. Parts List 4	左升降油缸 Lift cylinder,Left	1	Fig.7 (3.0t-3.2t)
33	See OPT. Parts List 4	右升降油缸 Lift cylinder,Right	1	Fig.7 (2.0t-2.5t)
33	See OPT. Parts List 4	右升降油缸 Lift cylinder,Right	1	Fig.7 (3.0t-3.2t)

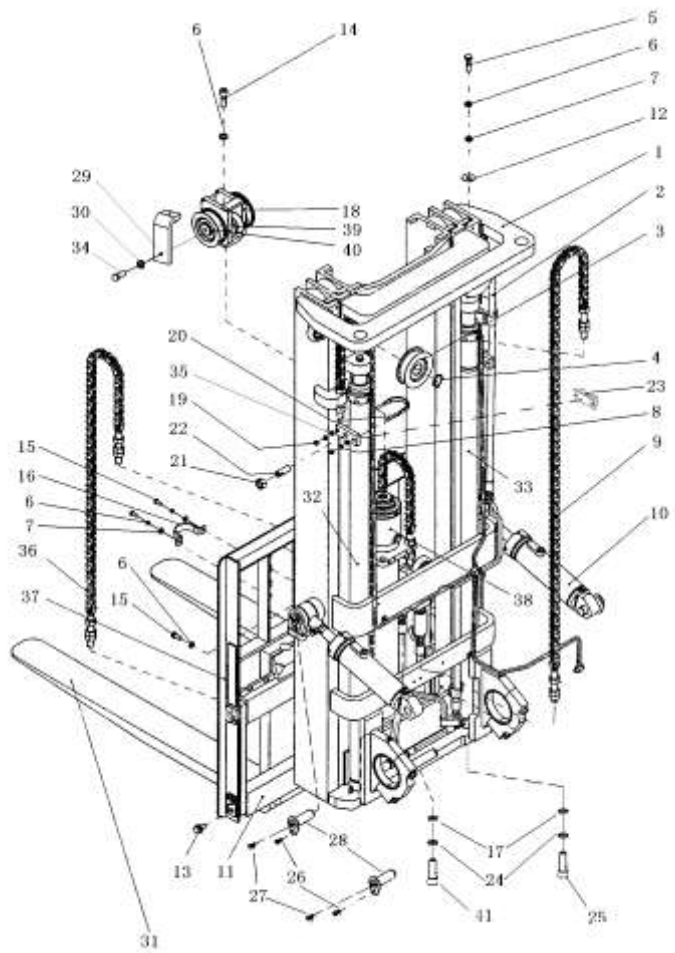


图 19 起升组件
Fig.19 Mast piping

2.0t-3.2t 3级全自由门架 TRIPLEX MAST

序号 Item	物料码 Part NO.	名称 Description	数量 Qty	备注或适用车型 Remarks or Serial NO.
34	G005783-014035-00	螺栓 M14×35 Bolt M14×35	2	
35	G0097P1-000008-00	垫圈8 Washer 8	4	
36	See OP Parts List 13	链条总成 Chain assy	2	Fig.20 (2.0t-2.5t)
36	See OP Parts List 13	链条总成 Chain assy	2	Fig.20 (3.0t-3.2t)
37	RC25M300-020000-000	挡货架 Load bracket	1	2.0t-2.5t
37	RC30M300-020000-000	挡货架 Load bracket	1	3.0t-3.2t
38	See OP Parts List 11	短升降油缸 Lift cylinder,Short	1	Fig.17 (2.0t-2.5t)
38	See OP Parts List 11	短升降油缸 Lift cylinder,Short	1	Fig.17 (3.0t-3.2t)
39	780309K-G00	链轮 Chain wheel	2	
40	G0894P1-000045-00	挡圈 45 Snap ring 45	2	
41	G000070-010035-00	螺钉 M10×35 Screw M10×35	1	

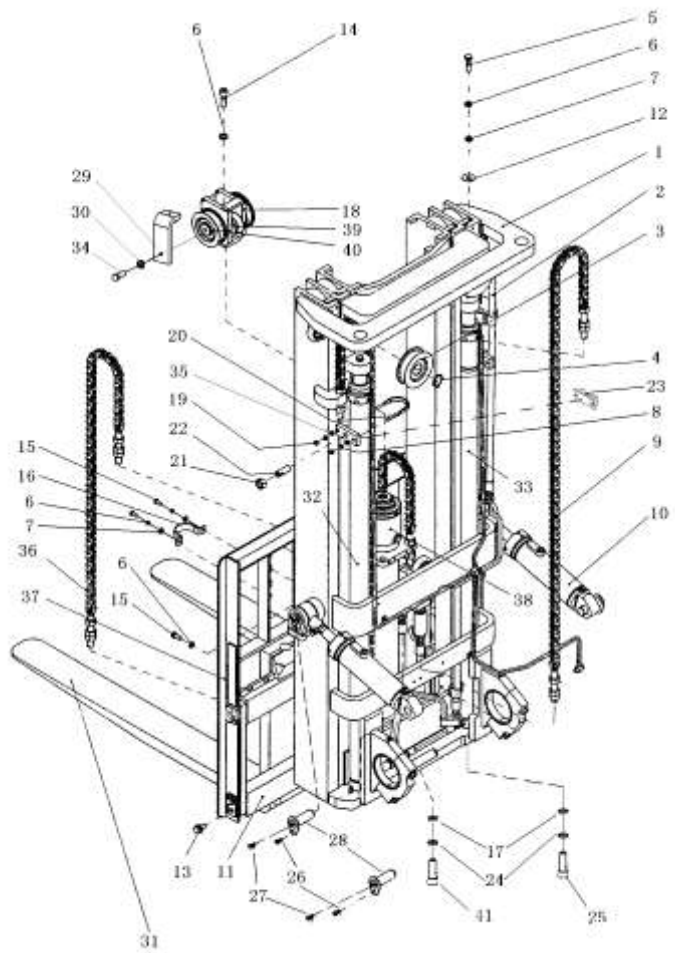
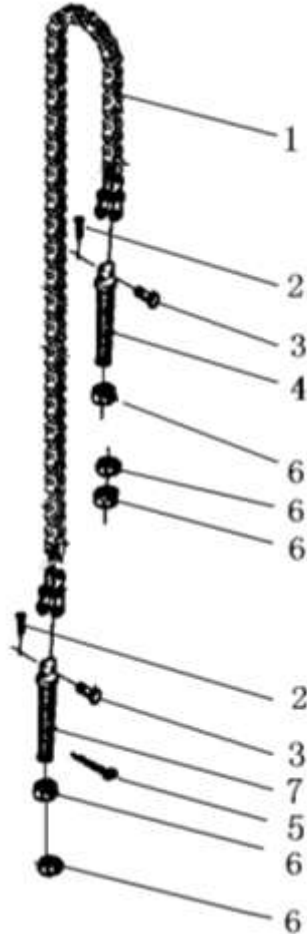


图 20 链条总成
Fig.20 Chain assy

2.0t-3.2t 3级全自由门架 TRIPLEX MAST



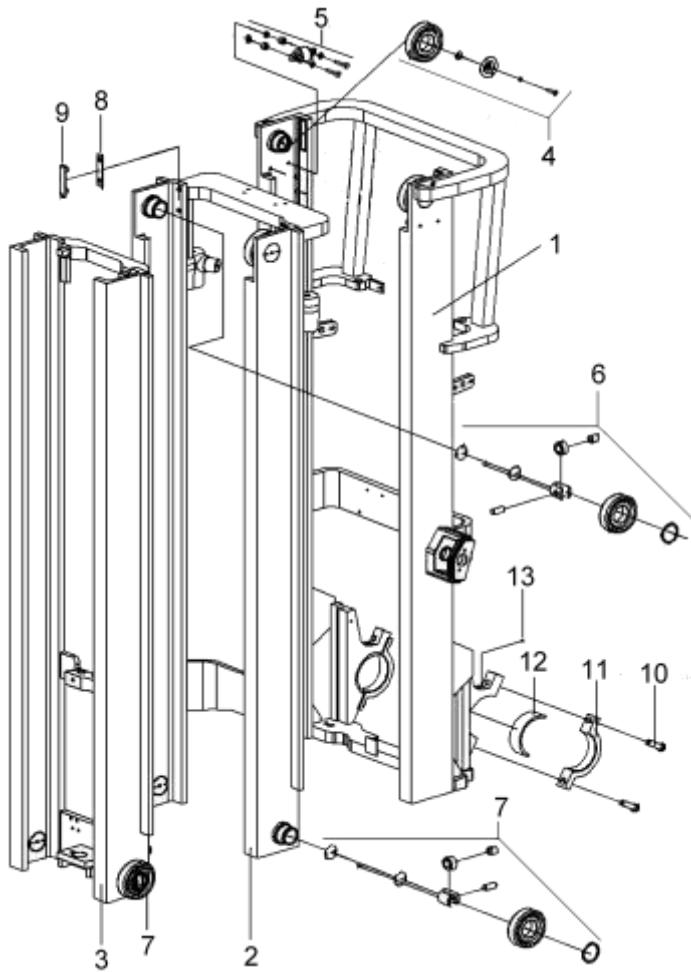
序号 Item	物料码 Part NO.	名称 Description	数量 Qty	备注或适用车型 Remarks or Serial NO.
A1	See OP Parts List 14	链条总成 (短升降油缸上用)	2	Item 36 (2.0t-2.5t)
A1	See OP Parts List 14	链条总成 (Lifting cylinder, Short)	2	Item 36 (3.0t-3.2t)
A2	See OP Parts List 14	链条总成 (左右升降油缸)	2	Item 9 (2.0t-2.5t)
A2	See OP Parts List 14	链条总成 (Lifting cylinder, R/L)	2	Item 9 (3.0t-3.2t)
1	NO PART NO.	板式链LH1623xN Chain LH1623xN	1	2.0t-2.5t
1	NO PART NO.	板式链LH1634xN Chain LH1634xN	1	3.0t-3.2t
2	G000091-003020-00	销3x20 Pin 3x20	2	2.0t-2.5t
2	G000091-3P2020-00	销3.2x20 Pin 3.2x20	2	3.0t-3.2t
3	NO PART NO.	销轴 Pin shaft	2	2.0t-2.5t
3	NO PART NO.	销轴 Pin shaft	2	3.0t-3.2t
4	NO PART NO.	链条接头 Connector	1	2.0t-2.5t
4	NO PART NO.	链条接头 Connector	1	3.0t-3.2t
5	G000091-2P5028-00	销2.5x28 Pin 2.5x28	1	
6	G006171-000020-02	螺母M20x1.5 Nut M20x1.5	5	
7	NO PART NO.	链条接头 Connector	1	2.0t-2.5t

选配表 14 <Optional Parts List 14>

序号 Item No.	A1 Item 9 (2.0t-2.5t)	A1 Item 9 (3.0t-3.2t)	A2 Item 36 (2.0t-2.5t)	A2 Item 36 (3.0t-3.2t)
起升高度 Lift Height	物料码 Part No..	物料码 Part No..	物料码 Part No..	物料码 Part No..
4000	RC25N400-030000-000	RC30N400-040000-000	RC25N400-030000-000	RC30N400-040000-000
4300	RC25N430-030000-000	RC30N430-040000-000	RC25N430-030000-000	RC30N430-040000-000
4500	RC25N450-030000-000	RC30N450-040000-000	RC25N450-030000-000	RC30N450-040000-000
4700	RC25N470-030000-000	RC30N470-040000-000	RC25N470-030000-000	RC30N470-040000-000
4800	RC25N480-030000-000	RC30N480-040000-000	RC25N480-030000-000	RC30N480-040000-000
5000	RC25N500-030000-000	RC30N500-040000-000	RC25N500-030000-000	RC30N500-040000-000
5500	RC25N550-030000-000	RC30N550-040000-000	RC25N550-030000-000	RC30N550-040000-000
6000	RC25N600-030000-000	RC30N600-040000-000	RC25N600-030000-000	RC30N600-040000-000
6500	RC25N650-030000-000	RC30N650-040000-000	RC25N650-030000-000	RC30N650-040000-000
7000	RC25N700-030000-000	RC30N700-040000-000	RC25N700-030000-000	RC30N700-040000-000

图 21 门架
Fig.21 Mast

2.0t-3.2t 3级全自由门架 TRIPLEX MAST



序号 Item	物料码 Part NO.	名称 Description	数量 Qty	备注或适用车型 Remarks or Serial NO.
1	See OP Parts List 15	外门架 Out mast	1	2.0t-3.2t
2	See OP Parts List 15	中门架 Middle mast	1	2.0t-3.2t
3	See OP Parts List 15	内门架 Inside mast	1	2.0t-2.5t
3	See OP Parts List 15	内门架 Inside mast	1	3.0t-3.2t
4	3U3H-002000A	纵向滚轮组 Cross roller assy.	2	图 II Fig. II
5	X25M300-302000-000	侧滚轮组 Side roller assy.	2	图 III Fig. III
6	N30M300-007000-002	复合滚轮组 Complex roller assy.	2	图 I Fig. I
7	3M3H-302000C	复合滚轮组 Complex roller assy.	4	图 I Fig. I
8	N30M300-000015-000	调整垫片 Adjusting shim	4	
9	N30M300-000014-000	导轨衬垫 Washer	4	
10	N30M300-005000-000	螺栓 M18×1.5×55 Bolt M18×1.5×55	4	
11	N30M300-000005-001	轴承盖 Bearing cap	2	
12	N30M300-000006-000	轴瓦 Axle bush	2	
13	G001152-010001-00	油杯 M10×1 Oil cup M10×1	2	

选配表 14 <Optional Parts List 14>

序号 Item No.	1	2	3 (2.0t-2.5t)	3 (3.0t-3.2t)
起升高度 Lift Height	物料码 Part No..	物料码 Part No..	物料码 Part No..	物料码 Part No..
4000	RC25N400-101000-001	RC25N400-103000-000	RC25N400-102000-000	RC30N400-102000-000
4300	RC25N430-101000-001	RC25N430-103000-000	RC25N430-102000-000	RC30N430-102000-000
4500	RC25N450-101000-001	RC25N450-103000-000	RC25N450-102000-000	RC30N450-102000-000
4700	RC25N470-101000-001	RC25N470-103000-000	RC25N470-102000-000	RC30N470-102000-000
4800	RC25N480-101000-001	RC25N480-103000-000	RC25N480-102000-000	RC30N480-102000-000
5000	RC25N500-101000-001	RC25N500-103000-000	RC25N500-102000-000	RC30N500-102000-000
5500	RC25N550-101000-001	RC25N550-103000-000	RC25N550-102000-000	RC30N550-102000-000
6000	RC25N600-101000-001	RC25N600-103000-000	RC25N600-102000-000	RC30N600-102000-000
6500	RC25N650-101000-001	RC25N650-103000-000	RC25N650-102000-000	RC30N650-102000-000
7000	RC25N700-101000-001	RC25N700-103000-000	RC25N700-102000-000	RC30N700-102000-000

图 22 油路系统
Fig.22 Mast piping

2.0t-3.2t 3级全自由门架 TRIPLEX MAST

序号 Item	物料码 Part NO.	名称 Description	数量 Qty	备注或适用车型 Remarks or Serial NO.
A	See OP Parts List 15	油路系统 Mast piping	1	2.0t-2.5t
B	See OP Parts List 15	油路系统 Mast piping	1	3.0t-3.2t
1	JISB2401-P14-G00	O形密封圈P14 O-ring P14	1	2.0t-2.5t
1	JISB2401-P18-G00	O形密封圈P18 O-ring P18	1	3.0t-3.2t
2	JISB2401-P18-G00	O形密封圈P18 O-ring P14	1	2.0t-2.5t
2	JISB2401-P24-G00	O形密封圈P24 O-ring P24	1	3.0t-3.2t
3	RC25M300-703000-001	油管总成 Oil pipe assy	1	2.0t-2.5t
3	RC30M300-703000-001	油管总成 Oil pipe assy	1	3.0t-3.2t
4	RC25N450-200001-000	直通管接头 Connector	1	2.0t-2.5t
4	RC30N450-200001-000	直通管接头 Connector	1	3.0t-3.2t
5	RC25N450-201000-000	90°管接头 90° Connector	1	
6	RC25N450-203000-000	硬管接头 Pipe Assy	1	
7	N30M300-003000-000	螺栓M8 ×1.25×16 Bolt M8×1.25×16	4	
8	N25M300-704000-000	三通接头 Tee connector	1	2.0t-2.5t
8	N30M300-704000-000	三通接头 Tee connector	1	3.0t-3.2t

图 22 油路系统
Fig.22 Mast piping

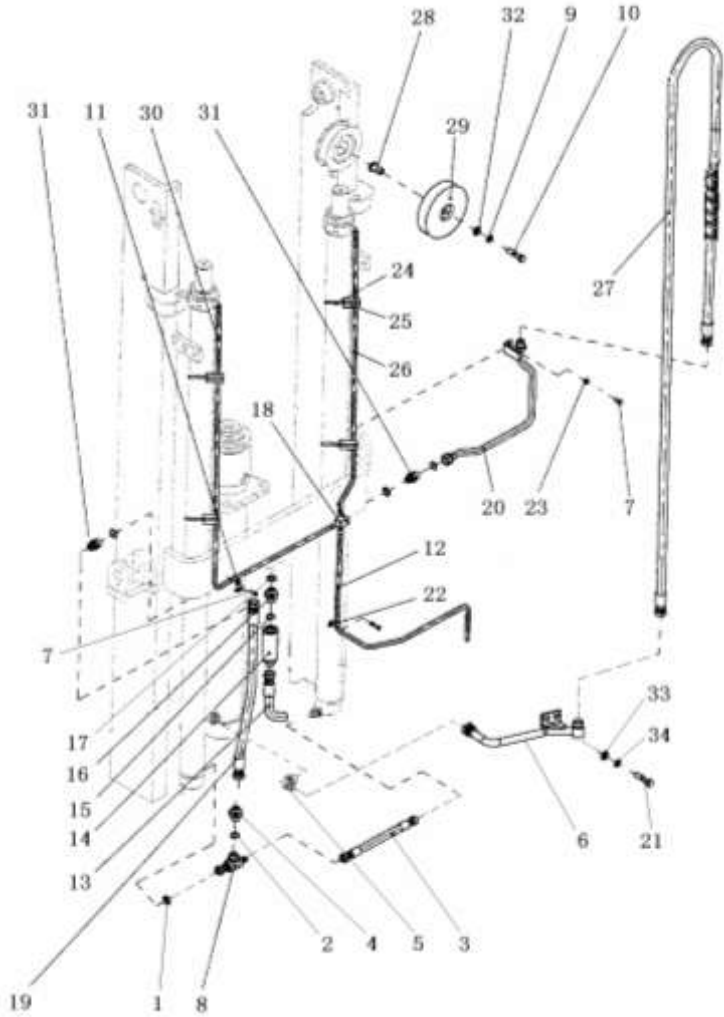
2.0t-3.2t 3级全自由门架 TRIPLEX MAST

序号 Item	物料码 Part NO.	名称 Description	数量 Qty	备注或适用车型 Remarks or Serial NO.
9	G0097P1-000012-00	垫圈12 Washer 12	1	
10	G005782-012050-00	螺栓M12x50 Bolt M12x50	1	
11	S16M300-700003-000	管夹 Clip	2	
12	N30M300-700007-000	回油管φ14.5/φ9.5 Return oil pipe	1	
13	N30N450-200005-000	胶管接头 Hose Assy	1	
14	XSF2-F16L-2T-G00	单向限速阀 Speed limiting valve	1	2.0t-2.5t
14	XSF2-F16L-3T-G00	单向限速阀 Speed limiting valve	1	3.0t-3.2t
15	G001235-002402P4-00	O形密封圈24x2.4 O-ring 24x2.4	1	
16	2025N4.3-200005	直通管接头 Connector	1	
17	J000982-000018-00	垫圈18 Washer	3	
18	N30M300-700005-000	三通接头 Tee connector	1	
19	RC25N450-200002-000	胶管接头 Hose assy	1	
20	RC25N450-202000-000	钢油管 Pipe sssy	1	
21	G005783-010025-00	螺栓M10x25 Bolt M10x25	2	
22	N30M300-700008-000	管夹 Clip	1	

图 22 油路系统
Fig.22 Mast piping

2.0t-3.2t 3级全自由门架 TRIPLEX MAST

序号 Item	物料码 Part NO.	名称 Description	数量 Qty	备注或适用车型 Remarks or Serial NO.
	23	垫圈8 Washer	1	
	24	通用尼龙扎带 Clamp-band	5	
	25	镶边 Band	5	
	26	回油管φ14.5/φ9.5 Return oil pipe	1	
	27	胶管接头 Hose Assy	1	
	28	轴套 Shaft sleeve	1	
	29	滑轮 Pulley wheel	1	
	30	回油管φ14.5/φ9.5 Return oil pipe	1	
	31	直通管接头 Connector	2	
	32	垫圈12 Washer 12	1	
	33	垫圈10 Washer 10	2	
	34	垫圈10 Washer 10	2	

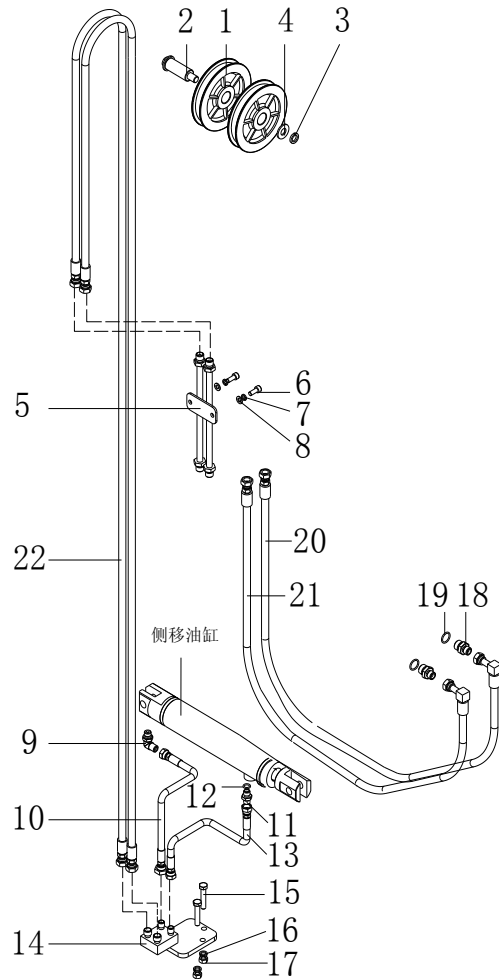


选配表 15 <Optional Parts List 15>

序号 Item No.	A (2.0t-2.5t)	B (3.0t-3.2t)	26	27	30
起升高度 Lift Height	代号 Part No.	代号 Part No.	代号 Part No.	代号 Part No.	代号 Part No.
4000	RC25N400-200000-000	RC30N400-200000-000	RC25N400-200005-000	RC25N400-200003-000	RC25N400-200004-000
4300	RC25N430-200000-000	RC30N430-200000-000	RC25N430-200005-000	RC25N430-200003-000	RC25N430-200004-000
4500	RC25N450-200000-000	RC30N450-200000-000	RC25N450-200005-000	RC25N450-200003-000	RC25N450-200004-000
4700	RC25N470-200000-000	RC30N470-200000-000	RC25N470-200005-000	RC25N470-200003-000	RC25N470-200004-000
4800	RC25N480-200000-000	RC30N480-200000-000	RC25N480-200005-000	RC25N480-200003-000	RC25N480-200004-000
5000	RC25N500-200000-000	RC30N500-200000-000	RC25N500-200005-000	RC25N500-200003-000	RC25N500-200004-000
5500	RC25N550-200000-000	RC30N550-200000-000	RC25N550-200005-000	RC25N550-200003-000	RC25N550-200004-000
6000	RC25N600-200000-000	RC30N600-200000-000	RC25N600-200005-000	RC25N600-200003-000	RC25N600-200004-000
6500	RC25N650-200000-000	RC30N650-200000-000	RC25N650-200005-000	RC25N650-200003-000	RC25N650-200004-000
7000	RC25N700-200000-000	RC30N700-200000-000	RC25N700-200005-000	RC25N700-200003-000	RC25N700-200004-000

图 23 侧移油路
Fig.23 lateral moving circuit

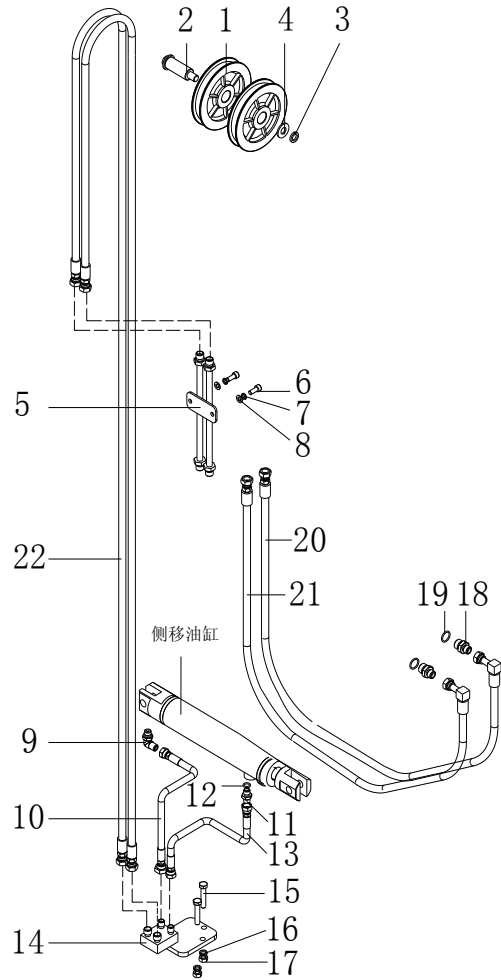
2.0t-3.2t 2级宽视野门架 SIMPLEX MAST



序号 Item	物料码 Part NO.	名称 Description	数量 Qty	备注或适用车型 Remarks or Serial NO.
A1	See OPT.Parts List 16	侧移油路 lateral moving circuit	1	2.0t-3.2t
1	J30B300-900006-000	滑轮 Pulley	2	
2	J25B300-900007-000	滑轮轴 pulley shaft	1	
3	G000093-000014-00	垫圈 14 Washer 14	1	
4	J25B300-900005-000	垫圈 Washer	1	
5	RC25B300-902000-000	钢油管 Oil pipe assy	1	
6	G000070-008020-00	螺钉 M8×20 Screw M8×20	2	
7	G000093-000008-00	垫圈 8 Washer 8	2	
8	G0097P1-000008-00	垫圈 8 Washer 8	2	
9	N163-620800-000	90° 管接头 Elbow	1	
10	RC25B300-900003-000	胶管总成 Hose	1	
11	S16B300-900011-000	直通接头 Nipple	1	
12	JISB2401-P11-G00	O 形密封圈 O-ring	1	
13	RC25B300-900002-000	胶管总成 Hose	1	
14	RC25B300-901000-000	接头支座 Joint bearing	1	

图 23 侧移油路
Fig.23 lateral moving circuit

2.0t-3.2t 2级宽视野门架 SIMPLEX MAST



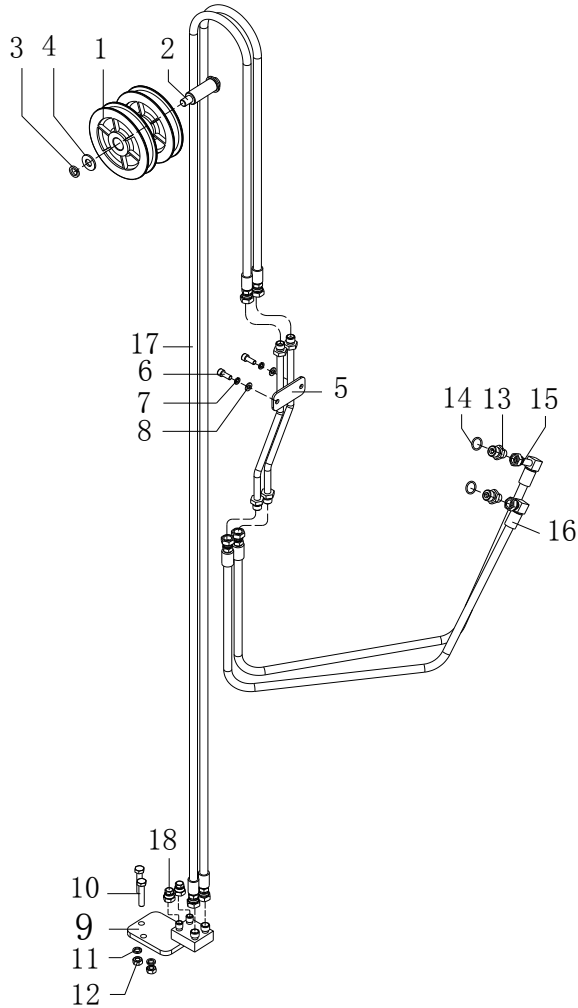
序号 Item	物料码 Part NO.	名称 Description	数量 Qty	备注或适用车型 Remarks or Serial NO.
15	G005782-010050-00	螺栓 M10×50 Bolt M10×50	2	
16	G000093-000010-00	垫圈 10 Washer 10	2	
17	G006170-000010-00	螺母 M10 Nut M10	2	
18	RC25V450-900006-000	直通接头 Nipple	2	
19	G001235-002202P4-00	O形密封圈 22×2.4 O-ring 22×2.4	2	
20	RC25V450-900001-000	胶管接头 Hose	1	
21	RC25V450-900002-000	胶管接头 Hose	1	
22	See OPT.Parts List 16	胶管接头 Hose	2	2.0t-3.2t

选配表 16 <Optional Parts List 16> (2.0t-3.2t)

序号 Item	A1 (2.0t-3.2t)	22 (2.0t-3.2t)
起升高度 Lift Height	物料码 Part No.	物料码 Part No.
2000	RC25B200-900000-001	RC25B200-900001-001
2500	RC25B250-900000-001	RC25B250-900001-001
2700	RC25B270-900000-001	RC25B270-900001-001
3000	RC25B300-000000-001	RC25B300-900001-001
3300	RC25B330-900000-001	RC25B330-900001-001
3500	RC25B350-900000-001	RC25B350-900001-001
3600	RC25B360-900000-001	RC25B360-900001-001
3700	RC25B370-900000-001	RC25B370-900001-001
4000	RC25B400-900000-001	RC25B400-900001-001
4300	RC25B400-900000-001	RC25B400-900001-001
4500	RC25B450-900000-001	RC25B450-900001-001
4700	RC25B470-900000-001	RC25B470-900001-001
4800	RC25B480-900000-001	RC25B480-900001-001
5000	RC25B500-900000-001	RC25B500-900001-001
5500	RC25B550-900000-001	RC25B550-900001-001
6000	RC25B600-900000-001	RC25B600-900001-001

图 24 第四联油路
Fig24 Fourth oil

2.0t-3.2t 2级宽视野门架 SIMPLEX MAST



序号 Item	物料码 Part NO.	名称 Description	数量 Qty	备注或适用车型 Remarks or Serial NO.
A1	See OPT.Parts List 17	第四联油路 Fourth joint oil	1	2.0t-3.2t
1	J30B300-900006-000	滑轮 pulley	2	
2	J25B300-900007-000	滑轮轴 pulley shaft	1	
3	G000093-000014-00	垫圈 14 Washer 14	1	
4	J25B300-900005-000	垫圈 6 Washer 6	1	
5	RC25B300-802000-000	钢油管 Oil pipe assy	1	
6	G000070-008020-00	螺钉 M8×20 Screw M8×20	2	
7	G000093-000008-00	垫圈 8 Washer 8	2	
8	G0097P1-000008-00	垫圈 8 Washer 8	2	
9	RC25B300-801000-000	接头支座 Joint bearing	1	
10	G005782-010050-00	螺栓 M10×50 Bolt M10×50	2	
11	G000093-000010-00	垫圈 10 Washer 10	2	
12	G006170-000010-00	螺母 M10 Nut M10	2	
13	RC25V450-900006-000	直通接头 Nipple	2	
14	G001235-002202P4-00	O形密封圈 22×2.4 O-ring 22×2.4	2	

选配表 17 <Optional Parts List 17> (2.0t-3.2t)

序号 Item	A1 (2.0t-3.2t)	17 (2.0t-3.2t)
起升高度 Lift Height	物料码 Part No.	物料码 Part No.
2000	RC25B200-800000-001	RC25B200-900001-001
2500	RC25B250-800000-001	RC25B250-900001-001
2700	RC25B270-800000-001	RC25B270-900001-001
3000	RC25B300-800000-001	RC25B300-900001-001
3300	RC25B330-800000-001	RC25B330-900001-001
3500	RC25B350-800000-001	RC25B350-900001-001
3600	RC25B360-800000-001	RC25B360-900001-001
3700	RC25B370-800000-001	RC25B370-900001-001
4000	RC25B400-800000-001	RC25B400-900001-001
4300	RC25B400-800000-001	RC25B400-900001-001
4500	RC25B450-800000-001	RC25B450-900001-001
4700	RC25B470-800000-001	RC25B470-900001-001
4800	RC25B480-800000-001	RC25B480-900001-001
5000	RC25B500-800000-001	RC25B500-900001-001
5500	RC25B550-800000-001	RC25B550-900001-001
6000	RC25B600-800000-001	RC25B600-900001-001

图 25 侧移油路
Fig.25 lateral moving circuit

2.0t-3.2t 2级全自由门架 DUPLEX MAST

序号 Item	物料码 Part NO.	名称 Description	数量 Qty	备注或适用车型 Remarks or Serial NO.
A1	See OPT.Parts List 18	侧移油路 lateral moving circuit	1	2.0t-2.5t
A2	See OPT.Parts List 18	侧移油路 lateral moving circuit	1	3.0t-3.2t
1	RC25V450-900013-000	油管护板 Protect cover	1	
2	RC25V450-900012-000	平垫圈 Washer	1	
3	G0894P1-000022-00	挡圈 22 Snap ring 22	1	
4	G005783-010040-00	螺栓 M10×40 Bolt M10×40	2	
5	G000093-000010-00	垫圈 10 Washer 10	8	
6	G0097P1-000010-00	垫圈 10 Washer 10	8	
7	RC25V450-900011-000	滑轮轴 Pulley shaft	1	
8	RC25V450-900014-000	滑轮 pulley	1	
9	See OPT.Parts List 18	胶管接头 hose connector	1	
10	See OPT.Parts List 18	胶管接头 hose connector	1	
11	JISB2401-P11-G00	O形密封圈 O-ring	1	
12	S16B300-900011-000	直通接头 Nipple	1	
备注：安装第四联油路时，序号9、10、21取消，序号24数量为2。 Note: the installation of the fourth page oil routes,item 9,10,21 cancel, item 24, Qty:2.				

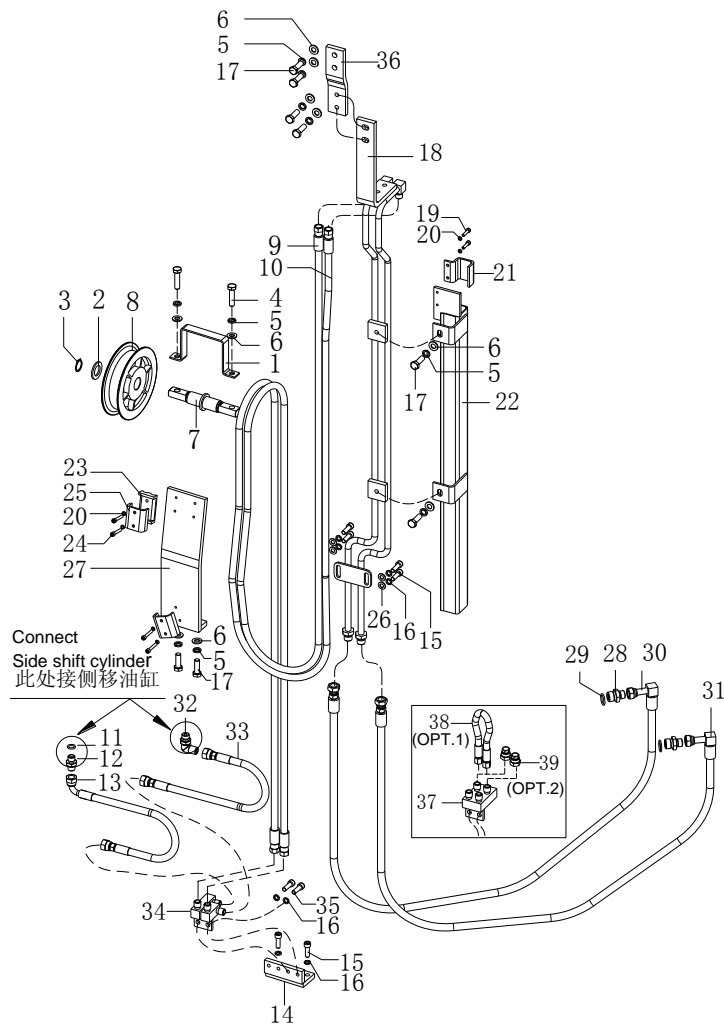
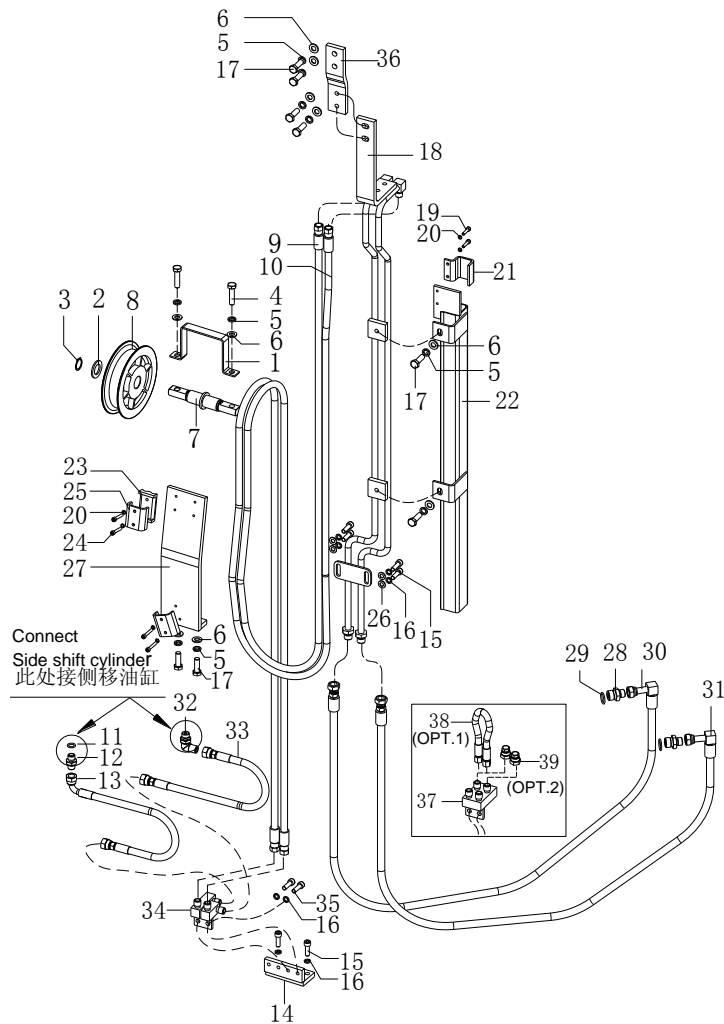


图 25 侧移油路
Fig.25 lateral moving circuit

2.0t-3.2t 2级全自由门架 DUPLEX MAST

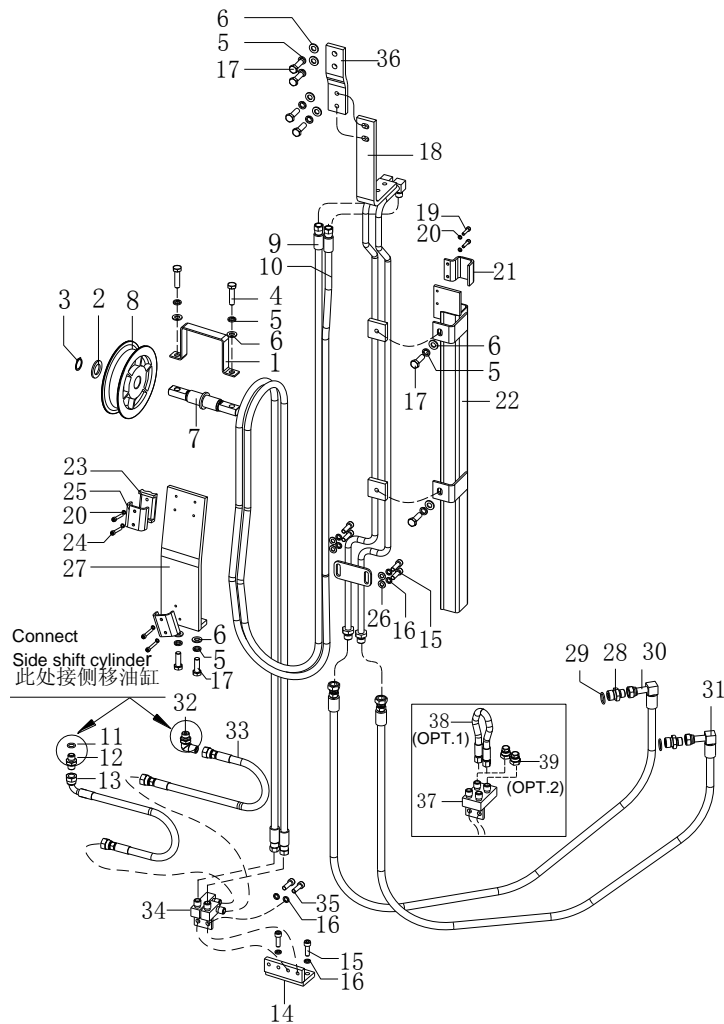


序号 Item	物料码 Part NO.	名称 Description	数量 Qty	备注或适用车型 Remarks or Serial NO.
13	RC25V450-900004-000	胶管总成 Hose	1	内置式 2.0t-2.5t ,Built-in
13	RC30V450-900004-000	胶管总成 Hose	1	内置式 3.0t-3.2t, Built-in
14	RC25V450-904000-000	固定支座 fixed bearing	1	
15	G000070-008025-00	螺钉 M8×25 Screw M8×25	4	
16	G000093-000008-00	垫圈 8 Washer 8	6	
17	G005783-010030-00	螺栓 M10×30 Bolt M10×30	6	
18	RC25C300-903000-000	钢油管 Oil pipe assy	1	2.0t-2.5t
18	RC30C300-903000-000	钢油管 Oil pipe assy	1	3.0t-3.2t
19	G000070-005020-00	螺钉 M5×20 Screw M5×20	2	
20	G000093-000005-00	垫圈 5 Washer 5	6	
21	RC25C300-900001-000	管夹 Tube folder	1	
22	RC25C300-902000-000	外门架滑导 Slider	1	
23	RC25V450-900018-000	橡胶垫 rubber pad	1	
24	G000070-005030-00	螺钉 M5×30 Screw M5×30	4	

备注：安装第四联油路时，序号9、10、21取消，序号24数量为2。
Note: the installation of the fourth page oil routes,item 9,10,21 cancel, item 24, Qty:2.

图 25 侧移油路
Fig.25 lateral moving circuit

2.0t-3.2t 2级全自由门架 DUPLEX MAST



序号 Item	物料码 Part NO.	名称 Description	数量 Qty	备注或适用车型 Remarks or Serial NO.
25	RC25V450-900017-000	管夹 Tube folder	1	
26	G0097P1-000008-00	垫圈 8 Washer 8	2	
27	RC25C300-904000-000	固定支座 Fixed bearing	1	
28	RC25V450-900006-000	直通接头 Nipple	2	
29	G001235-002202P4-00	O形密封圈 22×2.4 O-ring 22×2.4	2	
30	RC25V450-900001-000	胶管接头 Hose	1	
31	RC25V450-900002-000	胶管接头 Hose	1	
32	N163-620800-000	90° 管接头 Elbow	1	
33	RC25V450-900005-000	胶管总成 Hose	1	内置式 2.0t-2.5t ,Built-in
33	RC30V450-900005-000	胶管总成 Hose	1	内置式 3.0t-3.2t , Built-in
34	X15V450-807000-000	接头支座 Joint bearing	1	内置式, Built-in
34	X15V450-807000-000	接头支座 Joint bearing	1	≤2012-12 非内置式 Non-built-in
35	G000070-008020-00	螺钉 M8×20 Screw M8×20	2	
36		无此零件 No parts	1	2t-3.2t

备注：安装第四联油路时，序号9、10、21取消，序号24数量为2。
Note: the installation of the fourth page oil routes, item 9,10,21 cancel, item 24, Qty:2.

(2t-3.2t) 选配表 18 <Optional Parts List 18>

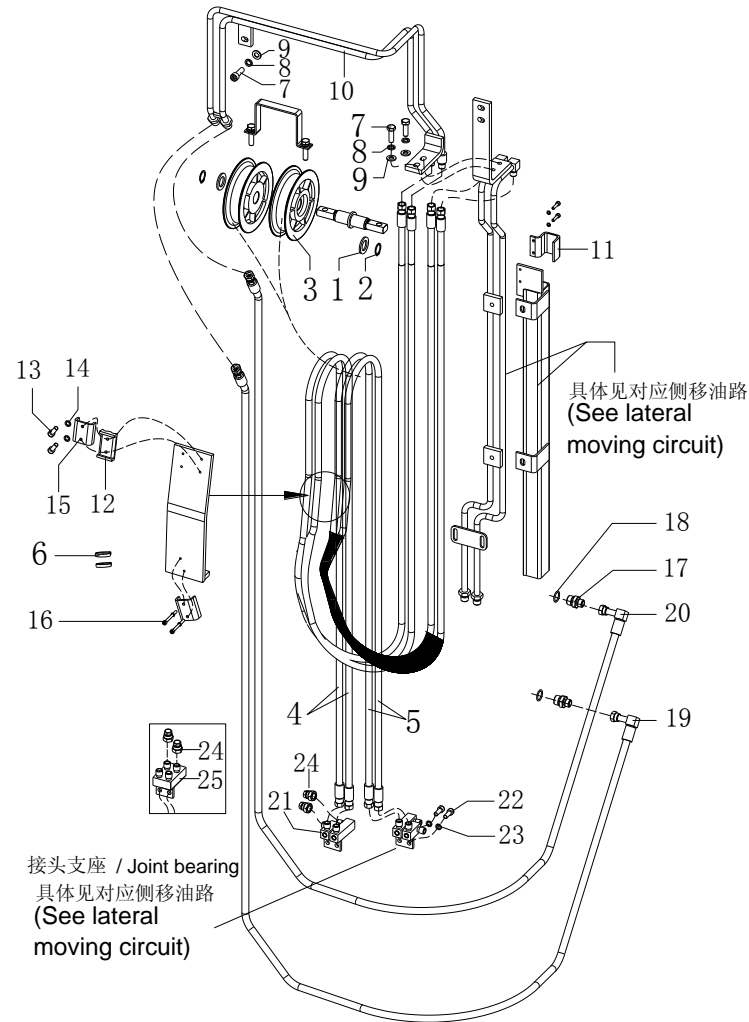
序号 Item	A1 (2.0t-2.5t)	A2 (3.0t-3.2t)
起升高度 Lift Height	物料码 Part No.	物料码 Part No.
2000	RC25C200-900000-000	RC30C200-900000-000
2500	RC25C250-900000-000	RC30C250-900000-000
2700	RC25C270-900000-000	RC30C270-900000-000
3000	RC25C300-900000-000	RC30C300-900000-000
3300	RC25C330-900000-000	RC30C330-900000-000
3500	RC25C350-900000-000	RC30C350-900000-000
3600	RC25C360-900000-000	RC30C360-900000-000
3700	RC25C370-900000-000	RC30C370-900000-000
4000	RC25C400-900000-000	RC30C400-900000-000

序号 Item	9	10	18 (2.0t-2.5t)	18 (3.0t-3.2t)	22
起升高度 Lift Height	物料码 Part No.	物料码 Part No.	物料码 Part No.	物料码 Part No.	物料码 Part No.
2000	RC25C200-905000-000	RC25C200-906000-000	RC25C200-903000-000	RC30C200-903000-000	RC25C200-902000-000
2500	RC25C250-905000-000	RC25C250-906000-000	RC25C250-903000-000	RC30C250-903000-000	RC25C250-902000-000
2700	RC25C270-905000-000	RC25C270-906000-000	RC25C270-903000-000	RC30C270-903000-000	RC25C270-902000-000
3000	RC25C300-905000-000	RC25C300-906000-000	RC25C300-903000-000	RC30C300-903000-000	RC25C300-902000-000
3300	RC25C330-905000-000	RC25C330-906000-000	RC25C330-903000-000	RC30C330-903000-000	RC25C330-902000-000
3500	RC25C350-905000-000	RC25C350-906000-000	RC25C350-903000-000	RC30C350-903000-000	RC25C350-902000-000
3600	RC25C360-905000-000	RC25C360-906000-000	RC25C360-903000-000	RC30C360-903000-000	RC25C360-902000-000
3700	RC25C370-905000-000	RC25C370-906000-000	RC25C370-903000-000	RC30C370-903000-000	RC25C370-902000-000
4000	RC25C400-905000-000	RC25C400-906000-000	RC25C400-903000-000	RC30C400-903000-000	RC25C400-902000-000

图 26 第四联油路

Fig.26 Fourth oil

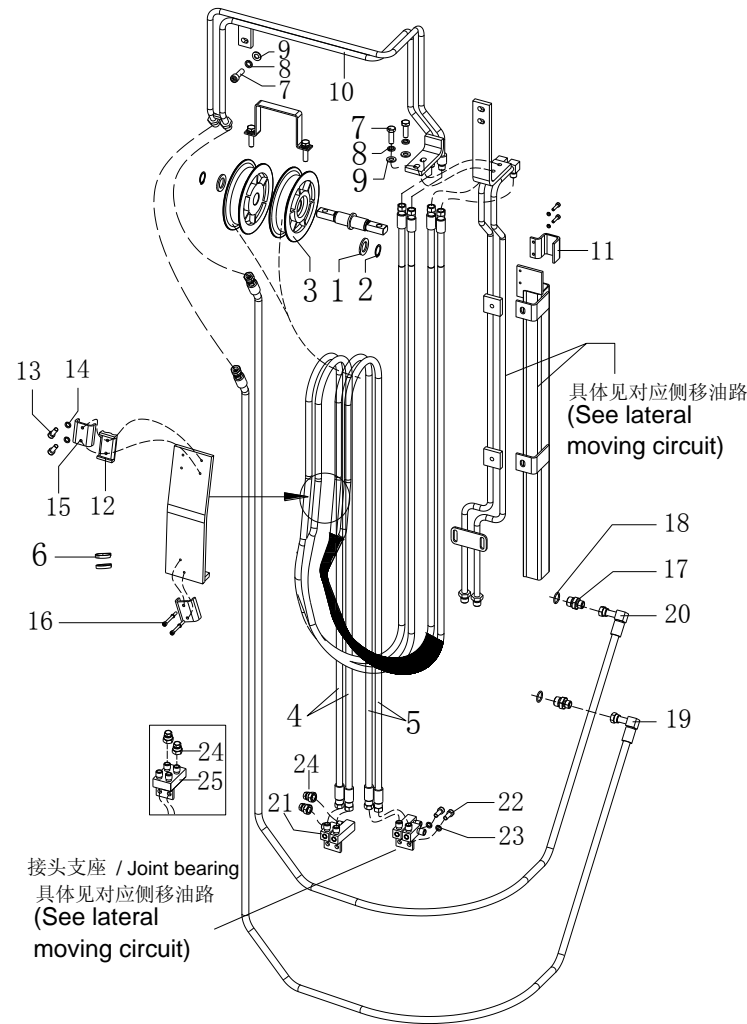
2.0t-3.2t 2级全自由门架 DUPLEX MAST



序号 Item	物料码 Part NO.	名称 Description	数量 Qty	备注或适用车型 Remarks or Serial NO.
A1	See OPT.Parts List 19	第四联油路 Fourth joint oil	1	2.0t-2.5t
A2	See OPT.Parts List 19	第四联油路 Fourth joint oil	1	3.0t-3.2t
1	RC25V450-900012-000	平垫圈 Washer	1	
2	G0894P1-000022-00	挡圈 22 Snap ring 22	1	
3	RC25V450-900014-000	滑轮 pulley	1	
4	See OPT.Parts List 19	胶管接头 Hose	1	
5	See OPT.Parts List 19	胶管接头 Hose	1	
6	GT-3001-G00	通用尼龙扎带 Nylon cable tie	3	
7	G005783-010030-00	螺栓 M10×30 Bolt M10×30	3	
8	G000093-000010-00	垫圈 10 Washer 10	3	
9	G0097P1-000010-00	垫圈 10 Washer 10	3	
10	RC25C300-808000-000	钢油管 Oil pipe assy	1	2.0t-2.5t
10	See OPT.Parts List 19	钢油管 Oil pipe assy	1	3.0t-3.2t

图 26 第四联油路
Fig.26 Fourth oil

2.0t-3.2t 2级全自由门架 DUPLEX MAST



序号 Item	物料码 Part NO.	名称 Description	数量 Qty	备注或适用车型 Remarks or Serial NO.
11	RC25C300-800003-000	管夹 Tube folder	1	
12	RC25V450-900018-000	橡胶垫 Rubber pad	1	
13	G000070-005030-00	螺钉 M5×30 Screw M5×30	2	
14	G000093-000005-00	垫圈 5 Washer 5	2	
15	RC25V450-900017-000	管夹 Tube folder	2	
16	G000070-005050-00	螺钉 M5×50 Screw M5×50	2	
17	RC25V450-900006-000	直通接头 Nipple	2	
18	G001235-002202P4-00	O形密封圈 22×2.4 O-ring 22×2.4	2	
19	See OPT.Parts List 19	胶管接头 Hose	1	
20	See OPT.Parts List 19	胶管接头 Hose	1	
21	X25V450-907000-000	接头支座 Joint bearing	1	内置式, Built-in
21	X25V450-907000-000	接头支座 Joint bearing	1	≤2012-12,非内置 Non-built-in
22	G000070-008020-00	螺钉 M8×20 Screw M8×20	2	
23	G000093-000008-00	垫圈 8 Washer 8	2	
24	RC25V450-805000-000	闷盖 Cover	2	

(2.0t-3.2t) 选配表 19 <Optional Parts List 19>

序号 Item	A1 (2.0t-2.5t)	A2 (3.0t-3.2t)
起升高度 Lift Height	物料码 Part No.	物料码 Part No.
2000	RC25C200-800000-000	RC30C200-800000-000
2500	RC25C250-800000-000	RC30C250-800000-000
2700	RC25C270-800000-000	RC30C270-800000-000
3000	RC25C300-800000-000	RC30C300-800000-000
3300	RC25C330-800000-000	RC30C330-800000-000
3500	RC25C350-800000-000	RC30C350-800000-000
3600	RC25C360-800000-000	RC30C360-800000-000
3700	RC25C370-800000-000	RC30C370-800000-000
4000	RC25C400-800000-000	RC30C400-800000-000

序号 Item	4	5	10 (3.0t-3.2t)	19	20
起升高度 Lift Height	物料码 Part No.	物料码 Part No.	物料码 Part No.	物料码 Part No.	物料码 Part No.
2000	RC25C200-805000-000	RC25C200-806000-000	RC30C250-808000-000	RC25C200-800001-000	RC25C200-800002-000
2500	RC25C250-805000-000	RC25C250-806000-000	RC30C250-808000-000	RC25C250-800001-000	RC25C250-800002-000
2700	RC25C270-805000-000	RC25C270-806000-000	RC30C250-808000-000	RC25C270-800001-000	RC25C270-800002-000
3000	RC25C300-805000-000	RC25C300-806000-000	RC30C300-808000-000	RC25C300-800001-000	RC25C300-800002-000
3300	RC25C330-805000-000	RC25C330-806000-000	RC30C300-808000-000	RC25C330-800001-000	RC25C330-800002-000
3500	RC25C350-805000-000	RC25C350-806000-000	RC30C300-808000-000	RC25C350-800001-000	RC25C350-800002-000
3600	RC25C360-805000-000	RC25C360-806000-000	RC30C300-808000-000	RC25C360-800001-000	RC25C360-800002-000
3700	RC25C370-805000-000	RC25C370-806000-000	RC30C300-808000-000	RC25C360-800001-000	RC25C360-800002-000
4000	RC25C400-805000-000	RC25C400-806000-000	RC25C300-808000-000	RC25C400-800001-000	RC25C400-800002-000

图 27 侧移油路
Fig.27 lateral moving circuit

2.0t-3.2t 3级全自由门架 TRIPLEX MAST

序号 Item	物料码 Part NO.	名称 Description	数量 Qty	备注或适用车型 Remarks or Serial NO.
A1	See OPT.Parts List 20	侧移油路 lateral moving circuit	1	2.0t-2.5t
A2	See OPT.Parts List 20	侧移油路 lateral moving circuit	1	3.0t-3.2t
1	RC25V450-900013-000	油管护板 Tubing shield	1	
2	RC25V450-900012-000	平垫圈 Washer	1	
3	G0894P1-000022-00	挡圈 22 Snap ring 22	1	
4	G005783-010040-00	螺栓 M10×40 Bolt M10×40	2	
5	G000093-000010-00	垫圈 10 Washer 10	8	
6	G0097P1-000010-00	垫圈 10 Washer 10	4	
7	RC25V450-900011-000	滑轮轴 pulley shaft	1	
8	RC25V450-900014-000	滑轮 pulley	1	
9	See OPT.Parts List 20	胶管接头 hose connector	2	
10	JISB2401-P11-G00	O形密封圈 P11 O-ring P11	1	
11	S16B300-900011-000	直通接头 Nipple	1	
12	RC25V450-900004-000	胶管总成 Hose assy	1	内置式 2.0t-2.5t ,Built-in
12	RC30V450-900004-000	胶管总成 Hose assy	1	内置式 3.0t-3.2t, Built-in

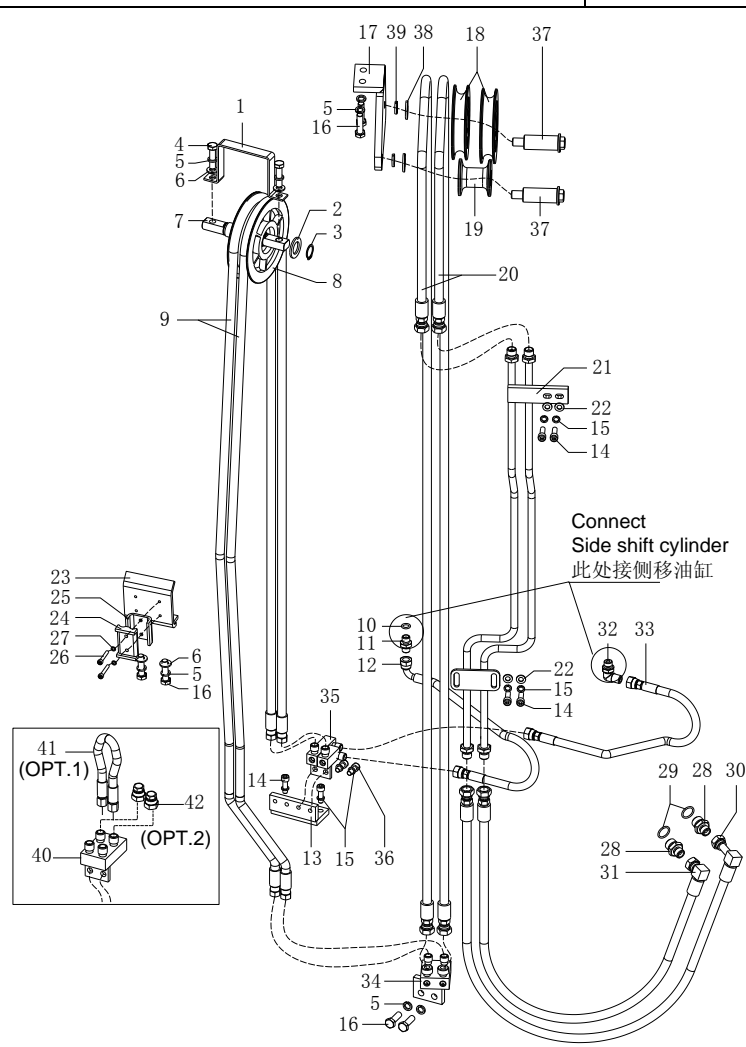
图 27 侧移油路
Fig.27 lateral moving circuit

2.0t-3.2t 3级全自由门架 TRIPLEX MAST

序号 Item	物料码 Part NO.	名称 Description	数量 Qty	备注或适用车型 Remarks or Serial NO.
13	RC25V450-904000-000	固定支座 fixed bearing	1	
14	G000070-008025-00	螺钉 M8×25 Screw M8×25	6	
15	G000093-000008-00	垫圈 8 Washer 8	8	
16	G005783-010030-00	螺栓 M10×30 Bolt M10×30	6	
17	RC25V450-901000-000	滑轮支座 Pulley bracket	1	
18	J25B300-900006-000	滑轮 Pulley	2	
19	RC25V450-900007-000	滑轮 Pulley	1	
20	See OPT.Parts List 20	胶管接头 hose connector	2	
21	See OPT.Parts List 20	钢油管 Oil pipe assy	1	
22	G0097P1-000008-00	垫圈 8 Washer 8	4	
23	RC25V450-900016-000	固定板 Fixed plate	1	
24	RC25V450-900018-000	橡胶垫 Rubber pad	1	
25	RC25V450-900017-000	管夹 Tube folder	1	
26	G000070-005020-00	螺钉 M5×30 Screw M5×30	2	
27	G000093-000005-00	垫圈 5 Washer 5	2	

图 27 侧移油路
Fig.27 lateral moving circuit

2.0t-3.2t 3级全自由门架 TRIPLEX MAST



序号 Item	物料码 Part NO.	名称 Description	数量 Qty	备注或适用车型 Remarks or Serial NO.
28	RC25V450-900006-000	直通接头 Nipple	2	
29	G001235-002202P4-00	O形密封圈 22×2.4 O-ring 22×2.4	2	
30	RC25V450-900001-000	胶管接头 Hose connector	1	
31	RC25V450-900002-000	胶管接头 Hose connector	1	
32	N163-620800-000	90° 管接头 Elbow	1	
33	RC25V450-900005-000	胶管接头 Hose connector	1	内置式 2.0t-2.5t ,Built-in
33	RC30V450-900005-000	胶管接头 Hose connector	1	内置式 3.0t-3.2t, Built-in
34	RC25V450-902000-000	接头支座 Joint bearing	1	
35	X15V450-807000-000	接头支座 Joint bearing	1	内置式, Built-in
35	X15V450-807000-000	接头支座 Joint bearing	1	≤2012-12 非内置式 Non-built-in
36	G000070-008020-00	螺钉 M8×20 Screw M8×20	2	
37	J25B300-900007-000	滑轮轴	2	
38	J25B300-900005-000	垫圈 Washer	2	
39	G000093-000014-00	垫圈 14 Washer 14	2	
40	X15V450-808000-000	接头支座 Joint bearing	1	≥2012-12,非内置式 Non-built-in

(2.0t-3.2t) 选配表 20 <Optional Parts List 20>

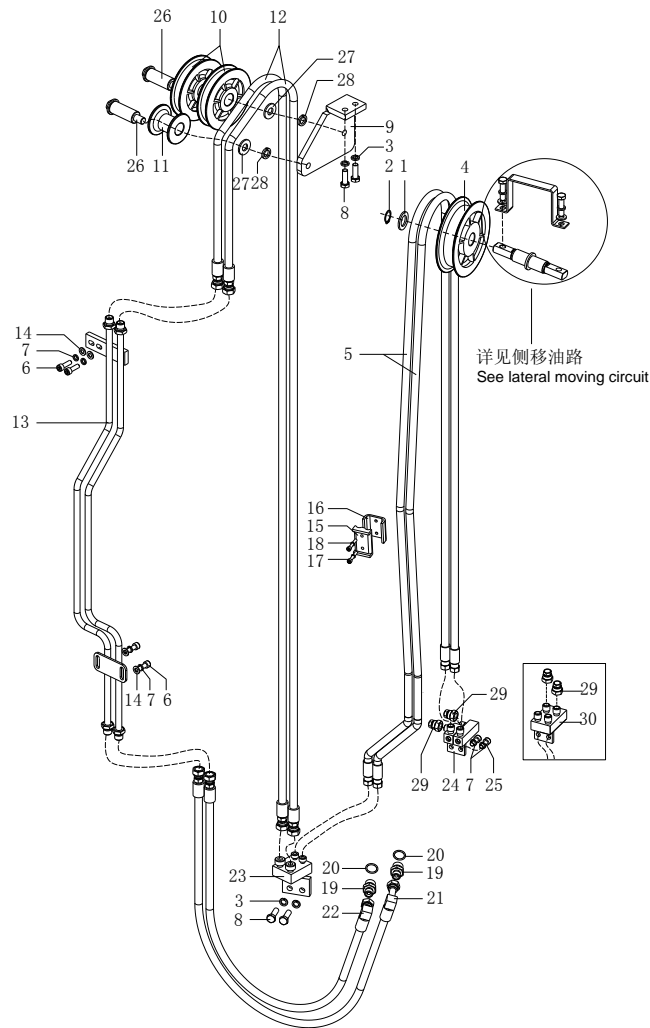
序号 Item	A1 (2.0t-2.5t)	A2 (3t-3.2t)
起升高度 Lift Height	物料码 Part No.	物料码 Part No.
4000	RC25V400-900000-000	RC30V400-900000-000
4300	RC25V430-900000-000	RC30V430-900000-000
4500	RC25V450-900000-000	RC30V450-900000-000
4700	RC25V470-900000-000	RC30V470-900000-000
4800	RC25V480-900000-000	RC30V480-900000-000
5000	RC25V500-900000-000	RC30V500-900000-000
5500	RC25V550-900000-000	RC30V550-900000-000
6000	RC25V600-900000-000	RC30V600-900000-000
6500	RC25V650-900000-000	RC30V650-900000-000
7000	RC25V700-900000-000	RC30V700-900000-000

序号 Item	9	20	21
起升高度 Lift Height	物料码 Part No.	物料码 Part No.	物料码 Part No.
4000	RC25V400-900015-000	RC25V400-900003-000	RC25V400-903000-000
4300	RC25V430-900015-000	RC25V430-900003-000	RC25V430-903000-000
4500	RC25V450-900015-000	RC25V450-900003-000	RC25V450-903000-000
4700	RC25V470-900015-000	RC25V470-900003-000	RC25V470-903000-000
4800	RC25V480-900015-000	RC25V480-900003-000	RC25V480-903000-000
5000	RC25V500-900015-000	RC25V500-900003-000	RC25V500-903000-000
5500	RC25V550-900015-000	RC25V550-900003-000	RC25V550-903000-000
6000	RC25V600-900015-000	RC25V600-900003-000	RC25V600-903000-000
6500	RC25V650-900015-000	RC25V650-900003-000	RC25V650-903000-000
7000	RC25V700-900015-000	RC25V700-900003-000	RC25V700-903000-000

图 28 第四联油路

Fig.28 Fourth oil

2.0t-3.2t 3级全自由门架 TRIPLEX MAST

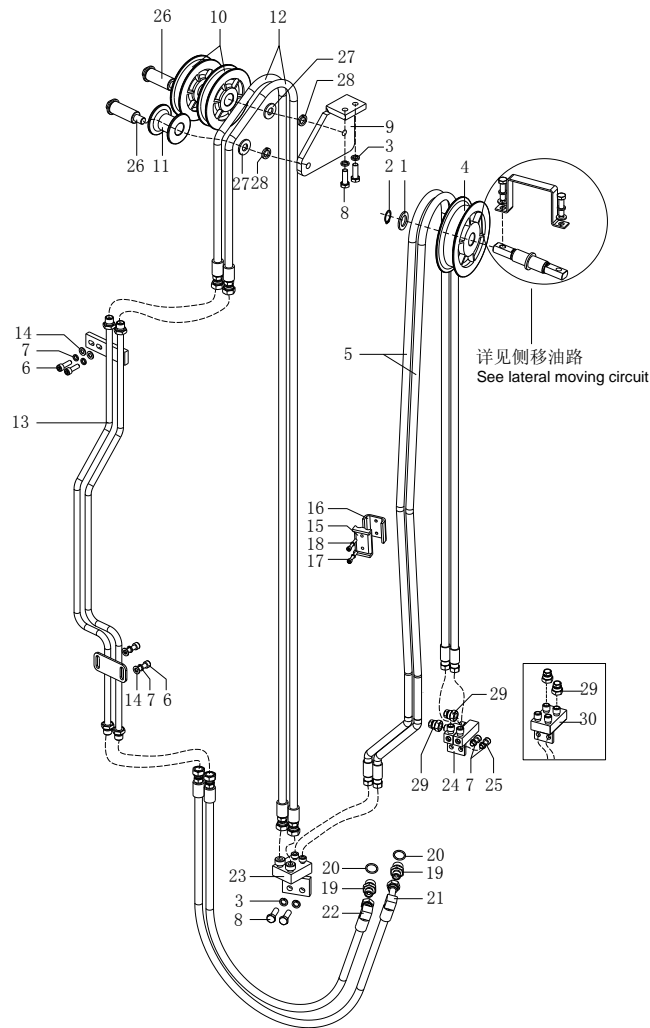


序号 Item	物料码 Part NO.	名称 Description	数量 Qty	备注或适用车型 Remarks or Serial NO.
A1	See OPT.Parts List 21	第四联油路 Fourth joint oil	1	2.0t-3.2t
1	RC25V450-900012-000	平垫圈 Washer	1	
2	G0894P1-000022-00	挡圈 22 Snap ring 22	1	
3	G000093-000010-00	垫圈 10 Washer 10	4	
4	RC25V450-900014-000	滑轮 Pulley	1	
5	See OPT.Parts List 21	胶管接头 Hose	2	2.0t-3.2t
6	G000070-008025-00	螺钉 M8×25 Screw M8×25	4	
7	G000093-000008-00	垫圈 8 Washer 8	6	
8	G005783-010030-00	螺栓 M10×30 Bolt M10×30	4	
9	RC25V450-901000-000	滑轮支座 Pulley bracket	1	
10	J25B300-900006-000	滑轮 Pulley	2	
11	RC25V450-900007-000	滑轮 Pulley	1	
12	See OPT.Parts List 21	胶管接头 hose connector	2	
13	See OPT.Parts List 21	钢油管 Oil pipe assy	1	
14	G0097P1-000008-00	垫圈 8 Washer 8	4	

图 28 第四联油路

Fig.28 Fourth oil

2.0t-3.2t 3级全自由门架 TRIPLEX MAST



序号 Item	物料码 Part NO.	名称 Description	数量 Qty	备注或适用车型 Remarks or Serial NO.
15	RC25V450-900018-000	橡胶垫 Rubber pad	1	
16	RC25V450-900017-000	管夹 Tube folder	1	
17	G000070-005020-00	螺钉 M5×30 Screw M5×30	2	
18	G000093-000005-00	垫圈 5 Washer 5	2	
19	RC25V450-900006-000	直通接头 Nipple	2	
20	G001235-002202P4-00	O形密封圈 22×2.4 O-ring 22×2.4	2	
21	RC25V450-800001-000	胶管接头 Hose	1	
22	RC25V450-800002-000	胶管接头 Hose	1	
23	RC25V450-802000-000	接头支座 Joint bearing	1	
24	X15V450-907000-000	接头支座 Joint bearing	1	内置式, Built-in
24	X15V450-907000-000	接头支座 Joint bearing	1	≤2012-12 非内置式 Non-built-in
25	G000070-008020-00	螺钉 M8×20 Screw M8×20	2	
26	J25B300-900007-000	滑轮轴 Pulley spindle	2	
27	J25B300-900005-000	垫圈 Washer	2	
28	G000093-000014-00	垫圈 14 Washer 14	2	

(2.0t-3.2t) 选配表 21 <Optional Parts List 21>

序号 Item	A1 (2.0t-3.2t)	5	12	13
起升高度 Lift Height	代号 Part No	代号 Part No	代号 Part No	代号 Part No
4000	RC25V400-800000-000	RC25V400-900015-000	RC25V400-900003-000	RC25V400-803000-000
4300	RC25V430-800000-000	RC25V430-900015-000	RC25V430-900003-000	RC25V430-803000-000
4500	RC25V450-800000-000	RC25V450-900015-000	RC25V450-900003-000	RC25V450-803000-000
4700	RC25V470-800000-000	RC25V470-900015-000	RC25V470-900003-000	RC25V470-803000-000
4800	RC25V480-800000-000	RC25V480-900015-000	RC25V480-900003-000	RC25V480-803000-000
5000	RC25V500-800000-000	RC25V500-900015-000	RC25V500-900003-000	RC25V500-803000-000
5500	RC25V550-800000-000	RC25V550-900015-000	RC25V550-900003-000	RC25V550-803000-000
6000	RC25V600-800000-000	RC25V600-900015-000	RC25V600-900003-000	RC25V600-803000-000
6500	RC25V650-800000-000	RC25V650-900015-000	RC25V650-900003-000	RC25V650-803000-000
7000	RC25V700-800000-000	RC25V700-900015-000	RC25V700-900003-000	RC25V700-803000-000